

LEGEND

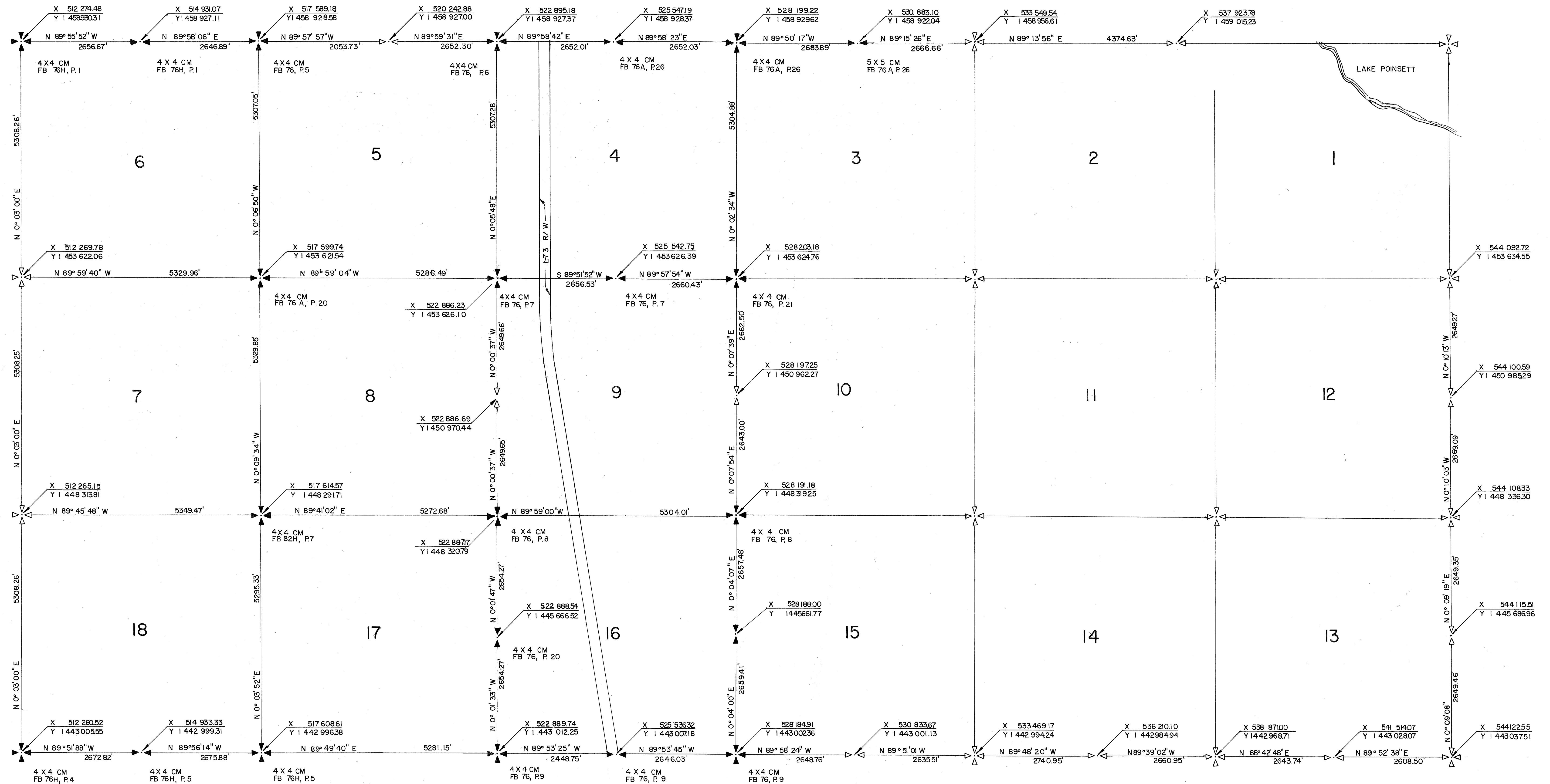
- FOUND OR SET SECTION CORNER
 - CALCULATED SECTION CORNER
 - NOTE: BOTTOM LINE OF MONUMENT DESCRIPTION MAKES REFERENCE TO A FIELD BOOK.
- DESCRIPTIONS OF THE SECTION CORNERS ARE AVAILABLE FROM THE CENTRAL AND SOUTHERN FLORIDA FLOOD CONTROL DISTRICT.
 HORIZONTAL DATUM IS BASED ON THE STATE PLANE COORDINATE SYSTEM ESTABLISHED FOR THE EAST ZONE OF FLORIDA.

CENTRAL AND SOUTHERN FLORIDA FLOOD CONTROL DISTRICT
WEST PALM BEACH, FLORIDA

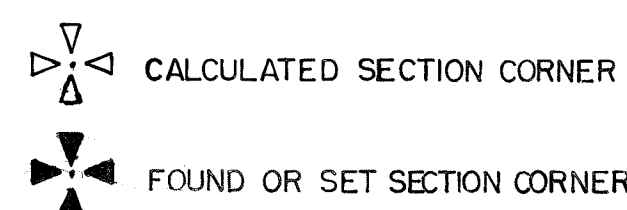
TOWNSHIP 25 S, RANGE 34 E
SOUTH HALF

DRAWN	CHKD	DATE	SCALE	DRAWING NO.	SHEET
DWN	CHKD	9-17-76	1"=1000'		2 OF 2

NO.	DATE	BY	REVISIONS



LEGEND



DESCRIPTIONS OF THE SECTION CORNERS ARE AVAILABLE FROM THE CENTRAL AND SOUTHERN FLORIDA FLOOD CONTROL DISTRICT.
 HORIZONTAL DATUM IS BASED ON THE STATE PLANE COORDINATE SYSTEM ESTABLISHED FOR THE EAST ZONE OF FLORIDA.

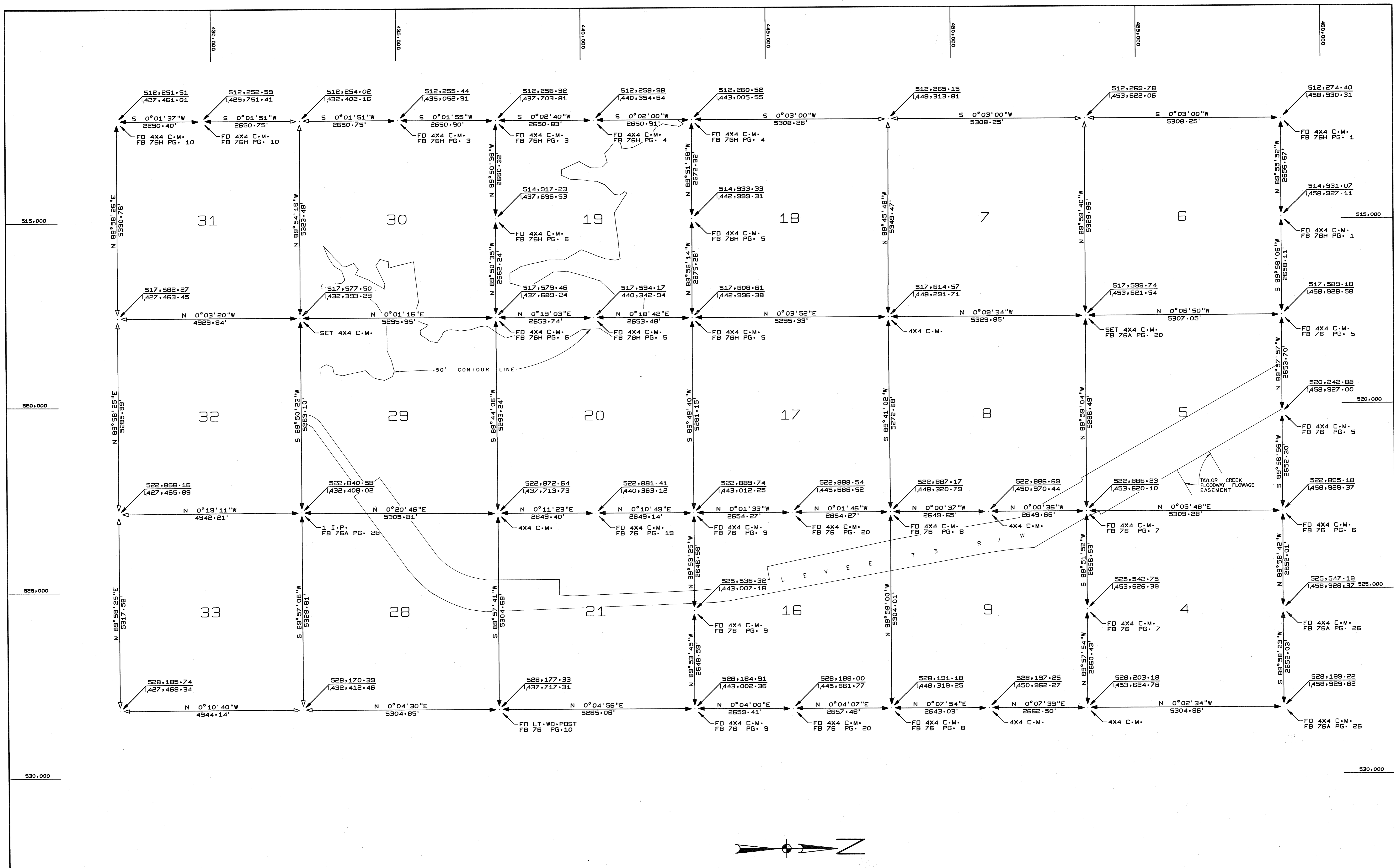


CENTRAL AND SOUTHERN FLORIDA FLOOD CONTROL DISTRICT
 WEST PALM BEACH, FLORIDA



NORTH HALF TOWNSHIP 25 S, RANGE 34 E

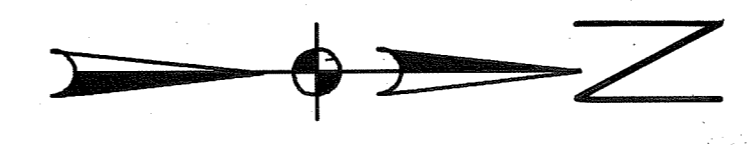
DWN	CHKD	DATE	REVISIONS

DRAWN	CHKD	DATE	SCALE	DRAWING NO.	SHEET OF
			1"=1000'		2



LEGEND

 FOUND OR SET SECTION CORNER
 CALCULATED SECTION CORNER
 DESCRIPTIONS OF THE SECTION CORNERS ARE AVAILABLE FROM THE CENTRAL AND SOUTHERN FLORIDA FLOOD CONTROL DISTRICT.
 HORIZONTAL DATUM IS BASED ON THE STATE PLANE RECTANGULAR COORDINATE SYSTEM ESTABLISHED FOR THE EAST ZONE OF FLORIDA.



ENGINEERING DIVISION
 CENTRAL AND SOUTHERN FLORIDA
 FLOOD CONTROL DISTRICT
 901 EVERNIA STREET WEST PALM BEACH, FLORIDA

WEST HALF
 TWP 25 S RGE 34 E
 OSCEOLA COUNTY

SCALE: 1" = 1000'	DATE
DRAWN BY P.L.H.	DATE
TRACED	DATE
CHECKED	DATE

DESIGN	APPROVED	DRAWING NUMBER	SHEET OF

DWN	CRD	DATE	REVISIONS