

LEGEND

- County boundary
- Township and range lines
- Section line
- Hard surfaced road
- Dirt road
- Trail
- Railroad
- Canal
- River
- Creek or branch
- Intermittent water course
- Natural watershed
- Contour— one foot intervals
- five
- Hammock
- Depression
- Slough or marsh

Note: Townships shown undivided indicate areas where the topography was compiled from meander lines, sketches, and available records. Townships shown divided into sections indicate areas where the topography was accurately surveyed.

ELEVATION OF DATUM, FT. (M.S.L.)	
City of West Palm Beach Datum 2490'	<p>RELATIONSHIP OF MISCELLANEOUS DATUM PLACES TO MEAN SEA LEVEL AS ESTABLISHED BY THE U.S. COAST AND GEODESIC SURVEY</p> <p>CENTRAL AND SOUTHERN FLORIDA WEST PALM BEACH DISTRICT</p> <p>ESTABLISHED DATUM PLANES</p> <p>DATE: 7/31/58</p> <p>SCALE: 2" = 1.0"</p> <p>MC-5K-1</p>
USED "OCEAN" Datum (Miami) 1427.5'	
USED "BAY" Datum (Miami) 1077.5'	
City of Miami Datum 0.220'	
Mean Sea Level Datum 0.000'	
Marsh Sea Level Datum 0.430'	<p>To convert to mean sea level subtract m.s.l. elevation of datum from given elevation</p>
Small Point Datum -0.430'	
Mean low water - Punta Rassa Datum 0.880'	<p>To convert to mean sea level add m.s.l. elevation of datum to given elevations</p>
Lake Okeechobee Datum -1.440'	

U. S. ARMY ENGINEER DISTRICT, JACKSONVILLE  
CORPS OF ENGINEERS  
378 RIVERSIDE AVENUE  
JACKSONVILLE 2, FLORIDA

ENGINEERING DIVISION  
DIRECTOR  
DEPT. DR.  
ADJ. PLAN  
PLANNING  
DESIGN  
CONSTRUCTION  
MAINTENANCE  
FILES

29 December 1958

Central and Southern Florida Flood Control District  
901 Evernia Street  
West Palm Beach, Florida

ATTN: Mr. Howard A. Seary  
Planning Branch

Dear Mr. Seary:

Reference is made to your letter of 23 December 1958 requesting information about our Drawing No. 1200-5620, entitled "Survey - Caloosahatchee and Lake Okeechobee Drainage Areas".

The contours refer to is unknown. Descriptions of bench marks shown on plans are not available.

It is intended, as work load permits, to tie these bench marks into mean sea level and then determine the datum plane.

When this information is obtained it will be forwarded to you.

Sincerely yours,  
LEO L. BURNETT  
Assistant Chief  
Engineering Division

BUT SEE NOTE ON SHEET 4 OF THIS SET - FROM C.O.P.E. SAYING ZERO OF THIS MAP EQUALS -8.8 FT M.S.L. FOR AREA WEST OF ORTONA.

C. D. OVERY

SURVEY  
CALOOSAHATCHEE RIVER AND LAKE OKEECHOBEE  
DRAINAGE AREAS  
FLORIDA

INDEX SHEET SCALE: 1:300,000

10 TOPOGRAPHIC MAPS

U.S. ENGINEER OFFICE, JACKSONVILLE, FLORIDA, MARCH, 1929

Submitted: *John Patton* Approved: *Allegan*

Drawn by: *John Patton* File No. 1200-5620

120D-8620 INDEX SHEET

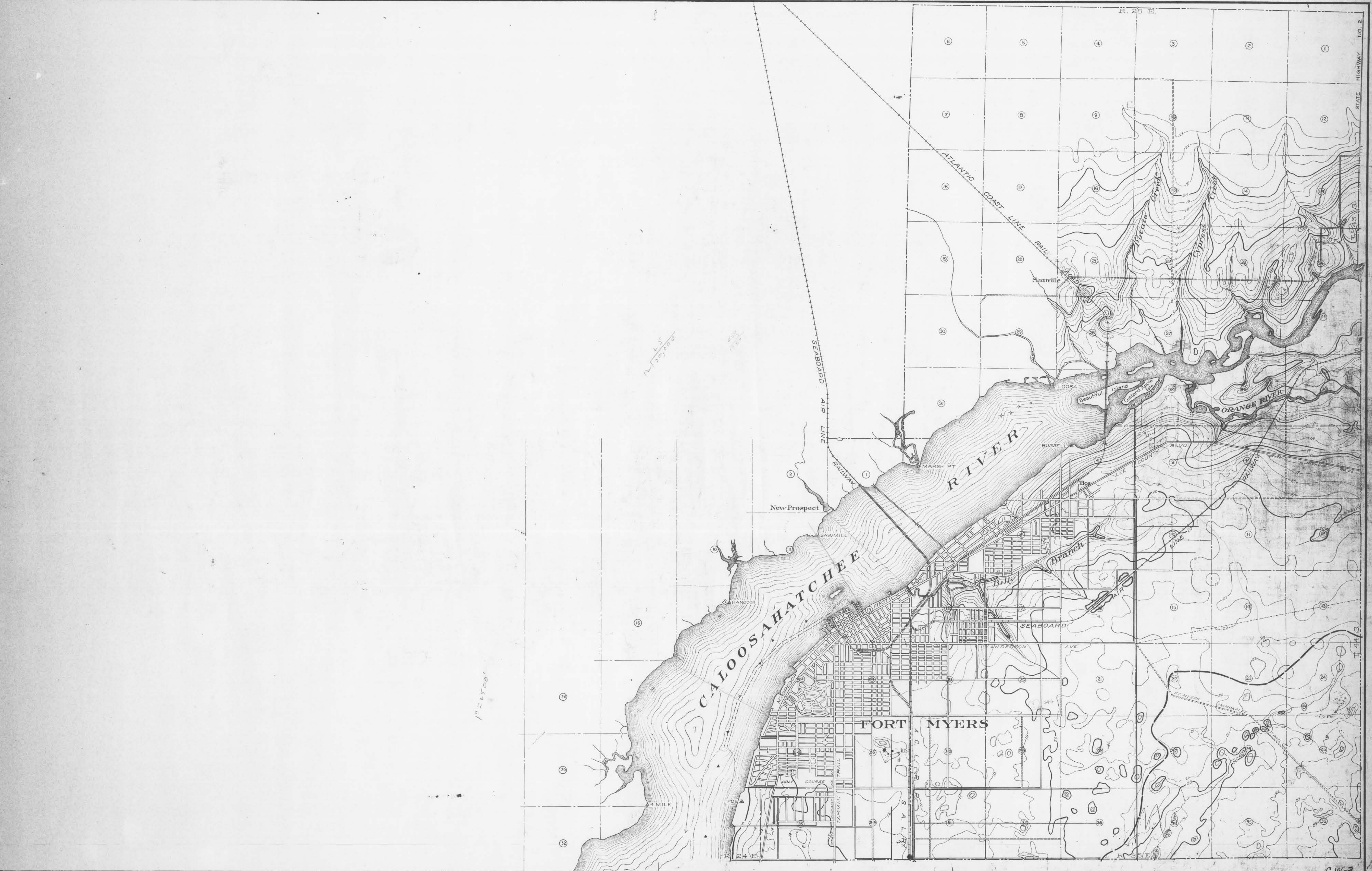




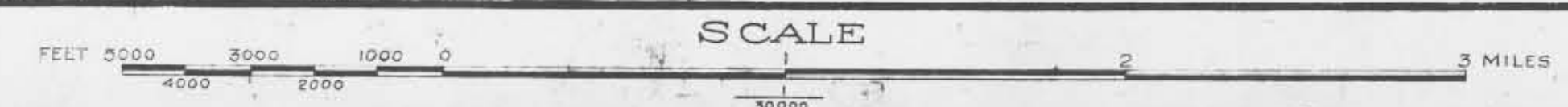
SURVEY OF CALOOSAHATCHEE RIVER AND LAKE OKEECHOBEE DRAINAGE AREAS



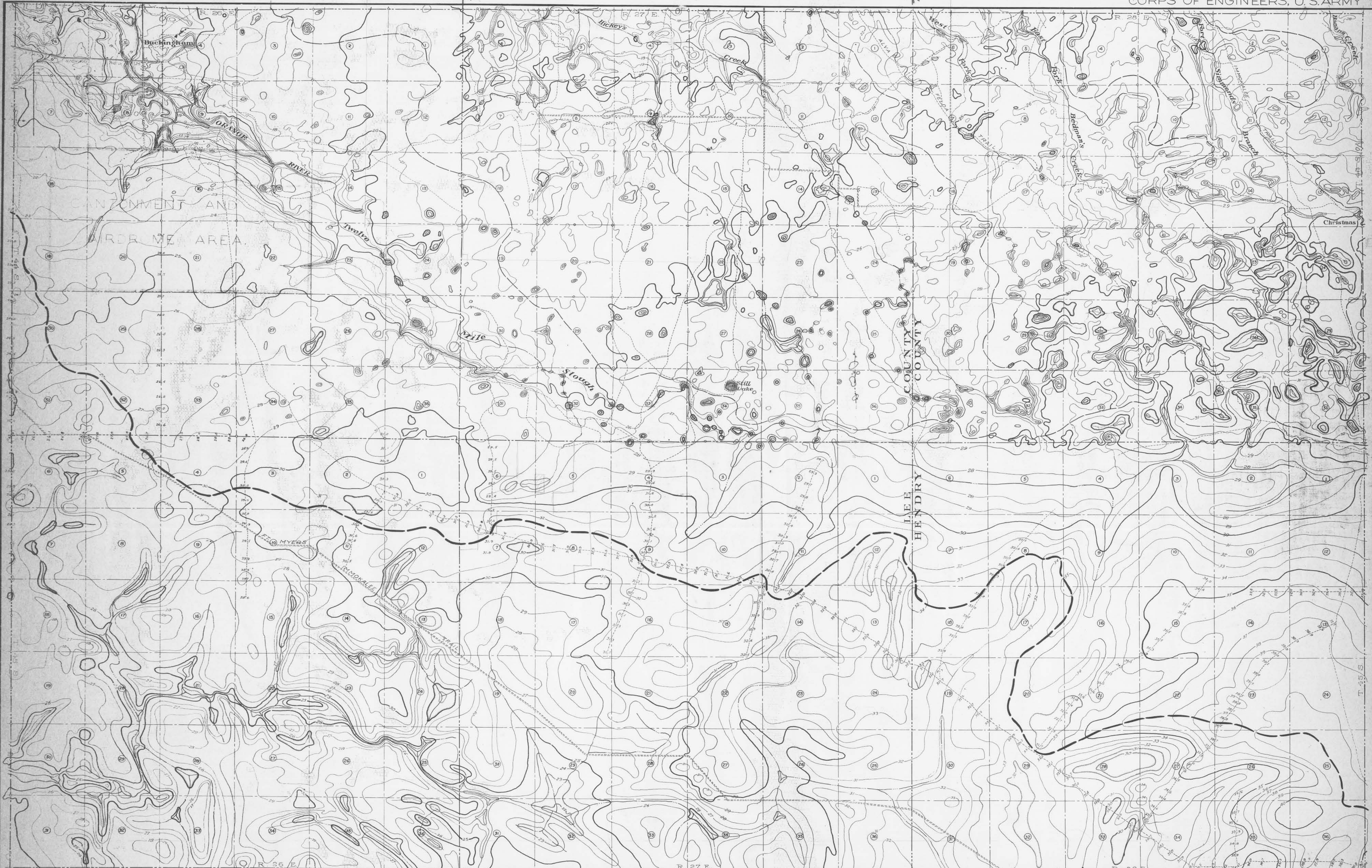




SURVEY OF CALOOSAHATCHEE RIVER AND LAKE OKEECHOBEE DRAINAGE AREAS



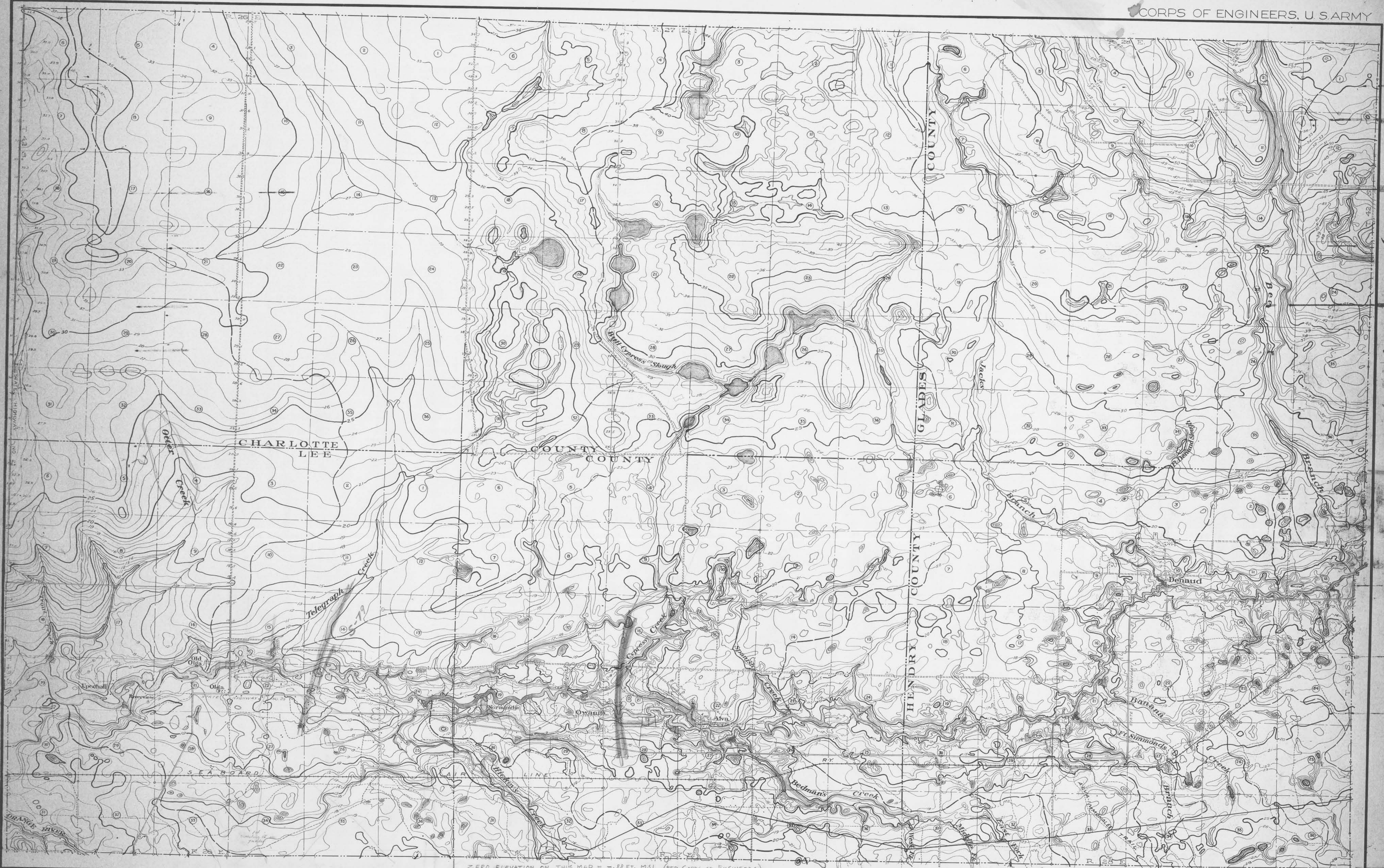




SURVEY OF CALOOSAHATCHEE RIVER AND LAKE OKEECHOBEE DRAINAGE AREAS







SURVEY OF CALOOSAHATCHEE RIVER AND LAKE OKEECHOBEE DRAINAGE AREAS

ZERO ELEVATION ON THIS MAP = -1.88 FT. MSL (PER CORPS OF ENGINEERS) FOR THE AREA WEST OF OSTAHA



R26  
R27

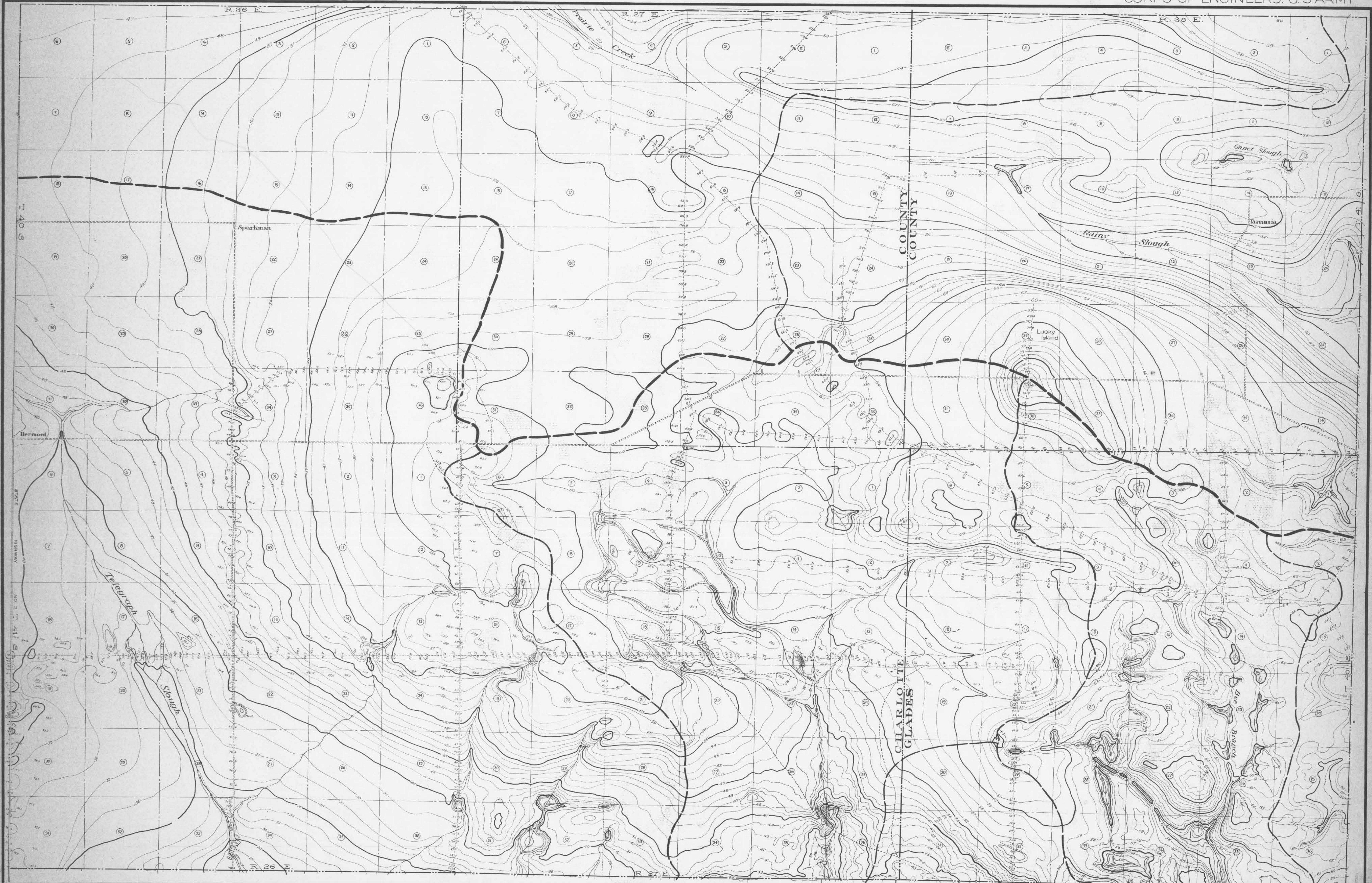
R27  
R28

12,510  
11 = 30 D M

FILE NO. 12-8620  
120 D-8620

CW-3  
SHEET 4

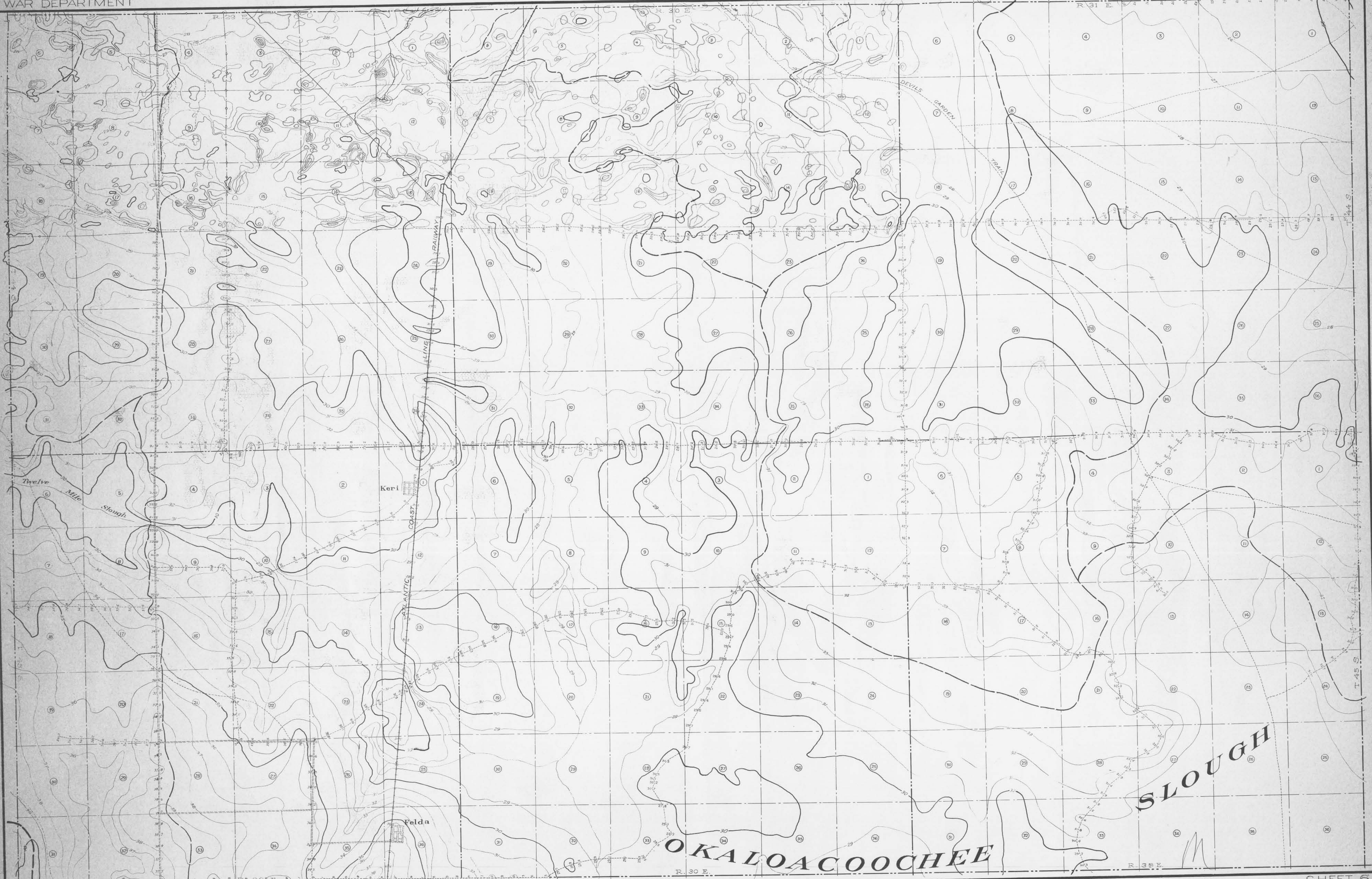




SURVEY OF CALOOSAHATCHEE RIVER AND LAKE OKEECHOBEE DRAINAGE AREAS



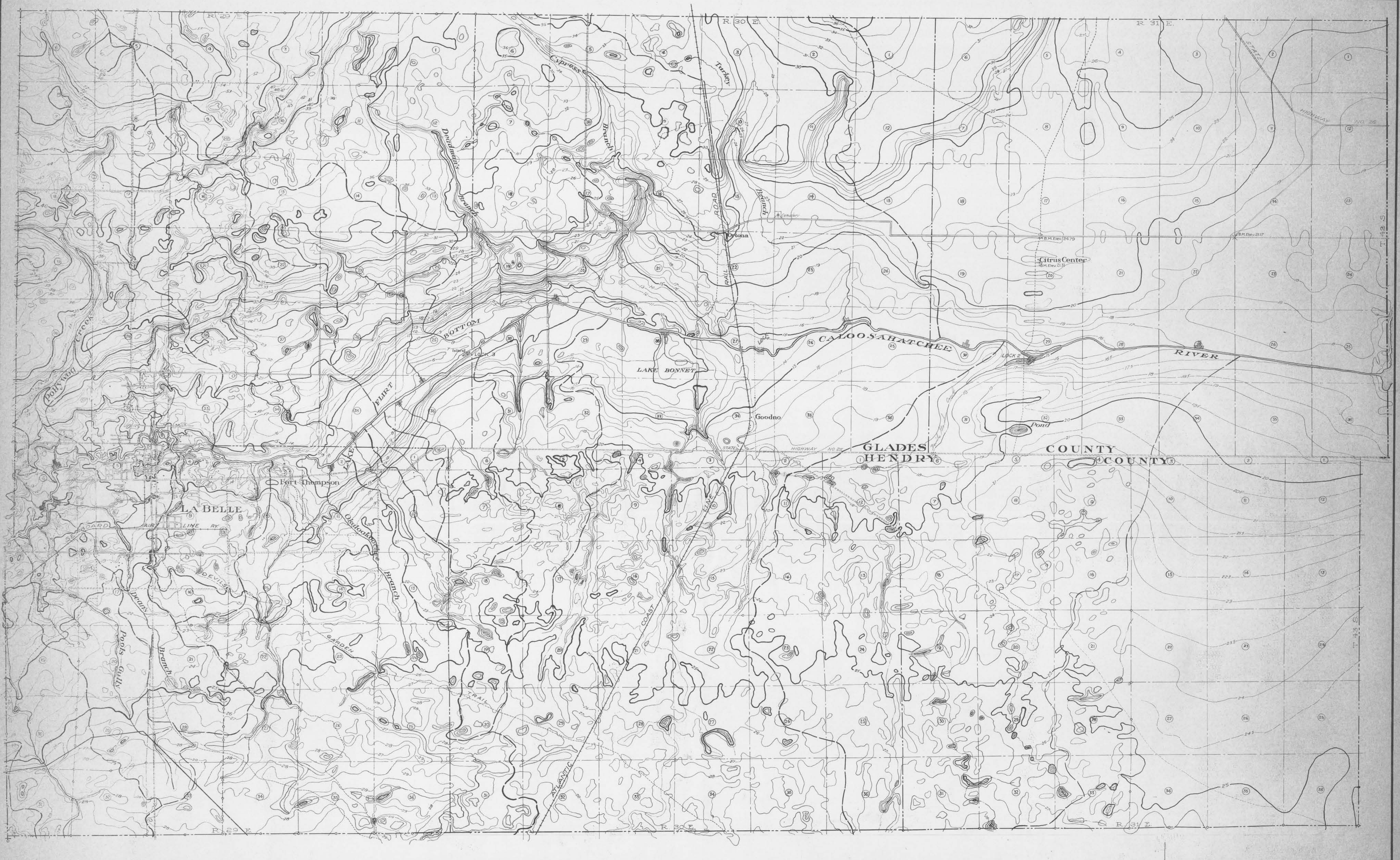




SURVEY OF CALOOSAHATCHEE RIVER AND LAKE OKEECHOBEE DRAINAGE AREAS

SCALE  
FEET 5000 4000 3000 2000 1000 0 30,000  
MILES 3 2 1 0

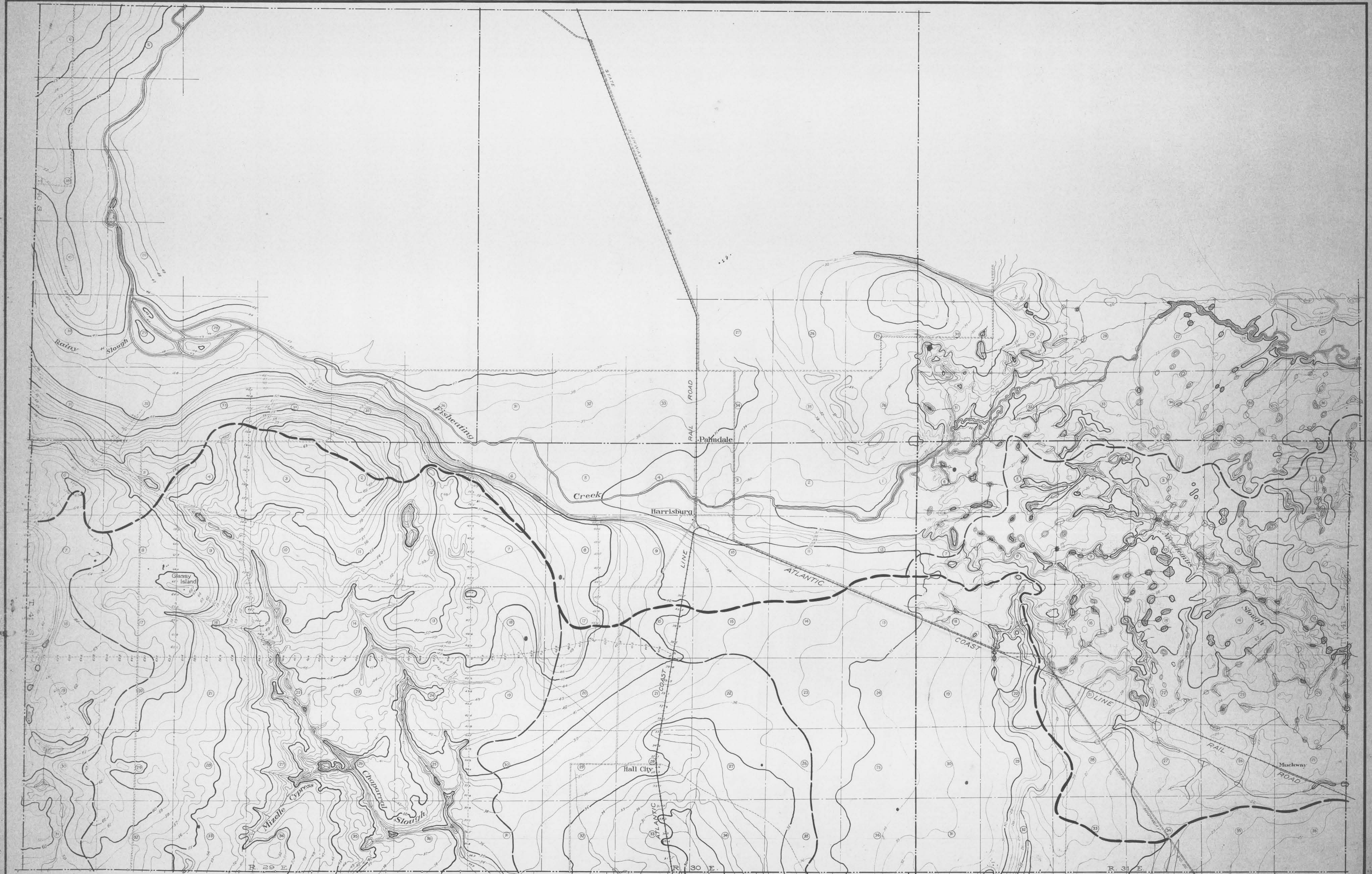




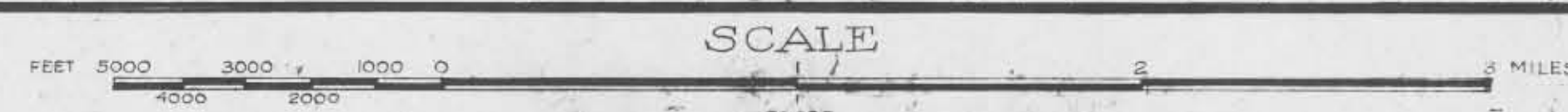
SURVEY OF CALOOSAHATCHEE RIVER AND LAKE OKEECHOBEE DRAINAGE AREAS



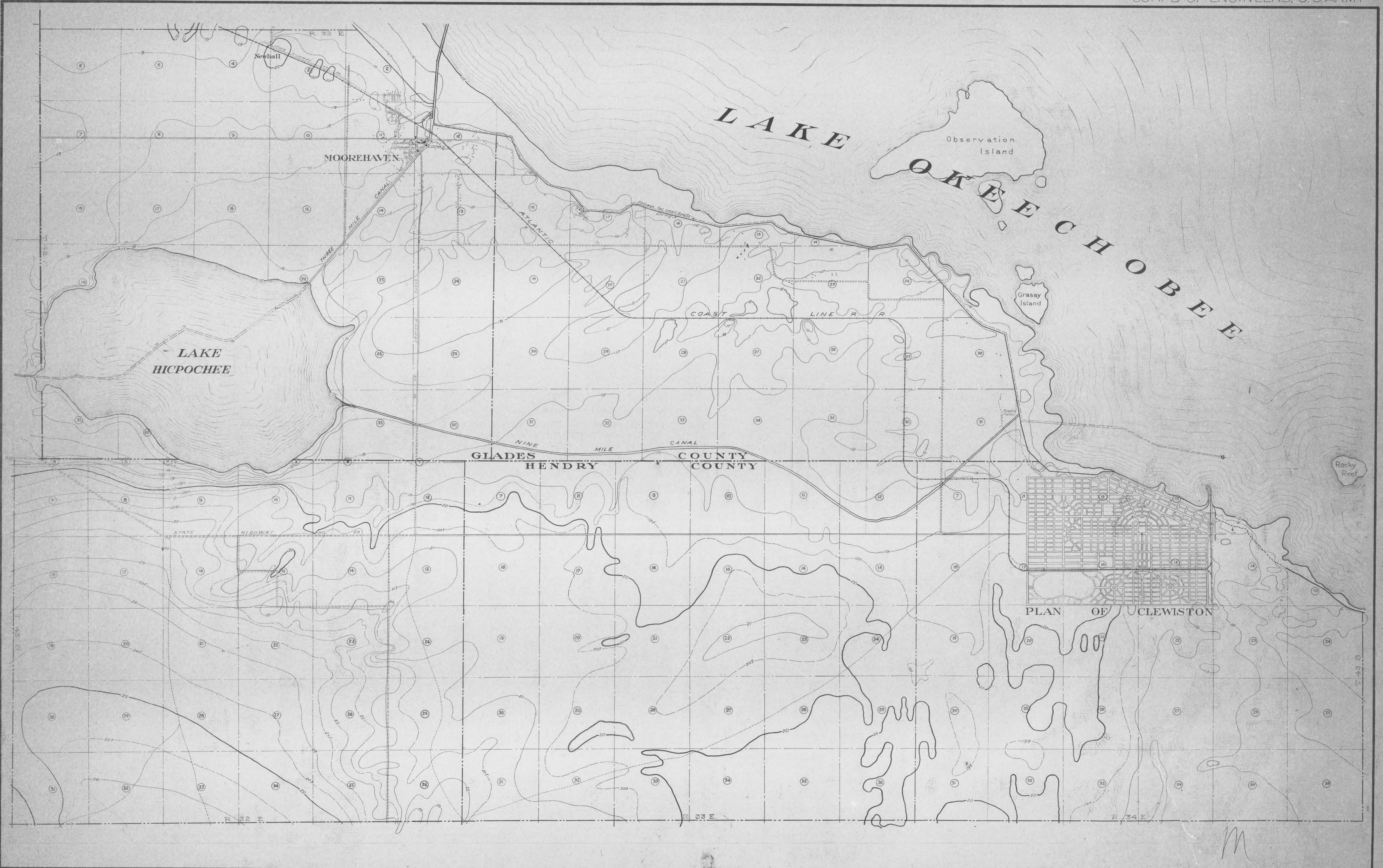




SURVEY OF CALOOSAHATCHEE RIVER AND LAKE OKEECHOBEE DRAINAGE AREAS







SURVEY OF CALOOSAHATCHEE RIVER AND LAKE OKEECHOBEE DRAINAGE AREAS







SURVEY OF CALOOSAHATCHEE RIVER AND LAKE OKEECHOBEE DRAINAGE AREAS

