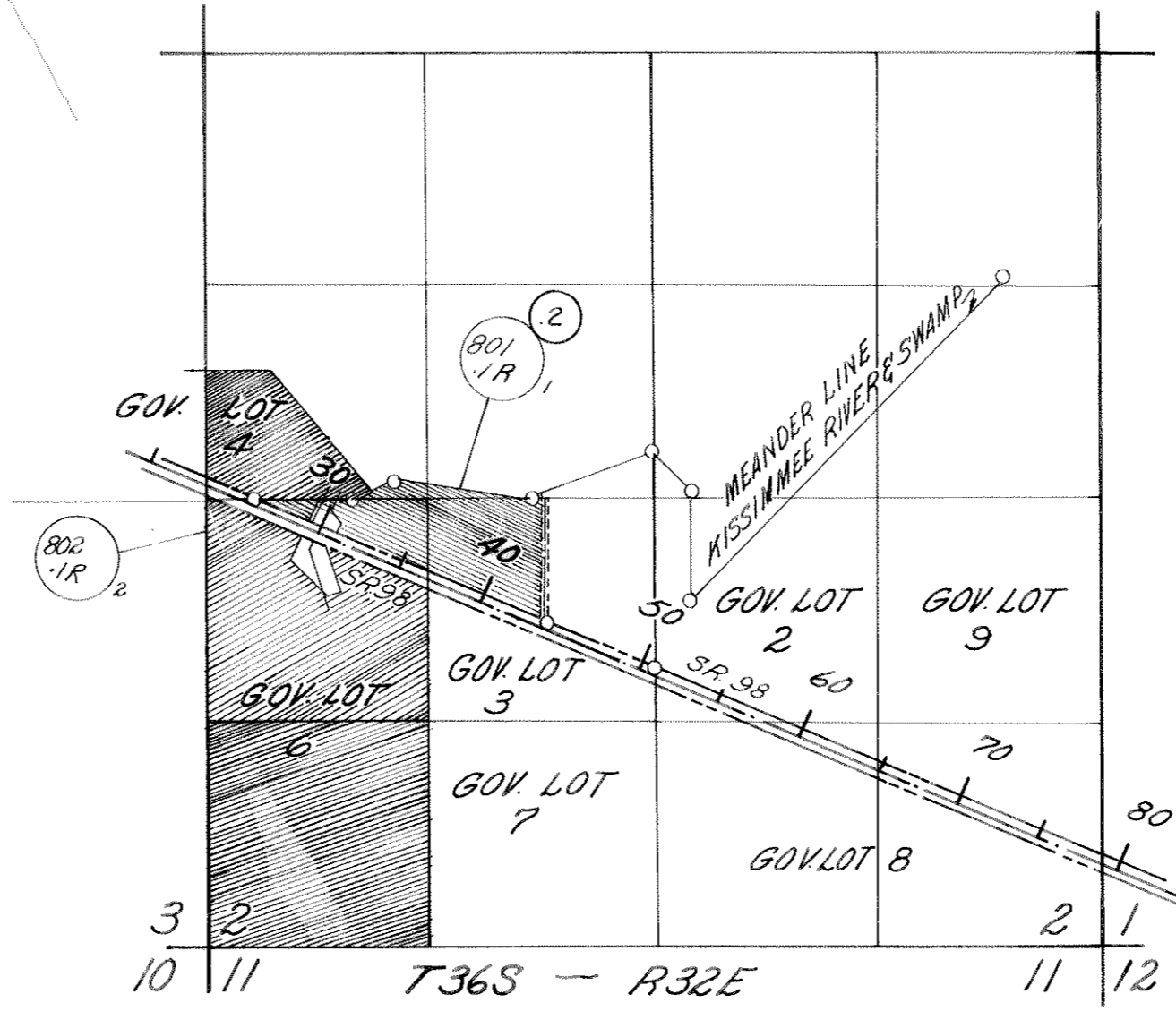
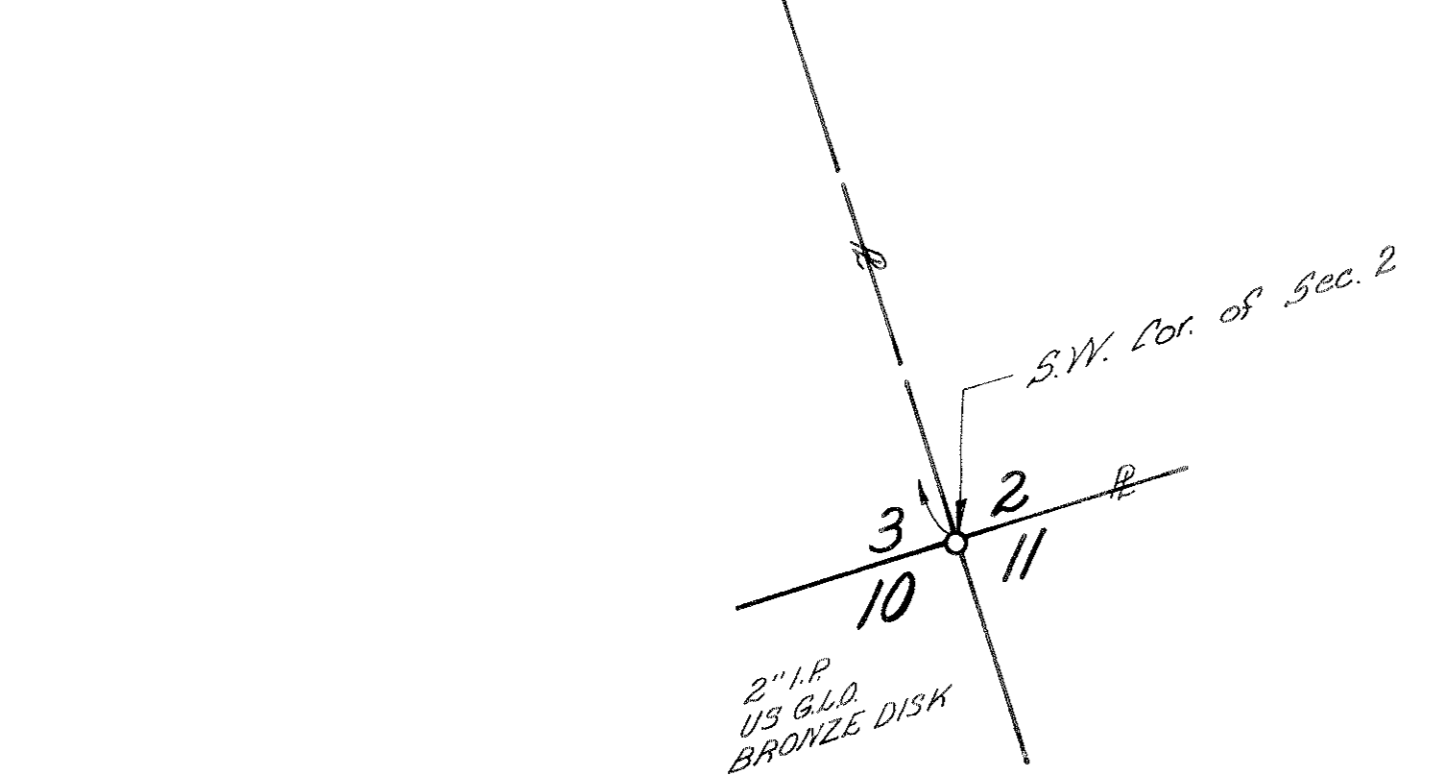
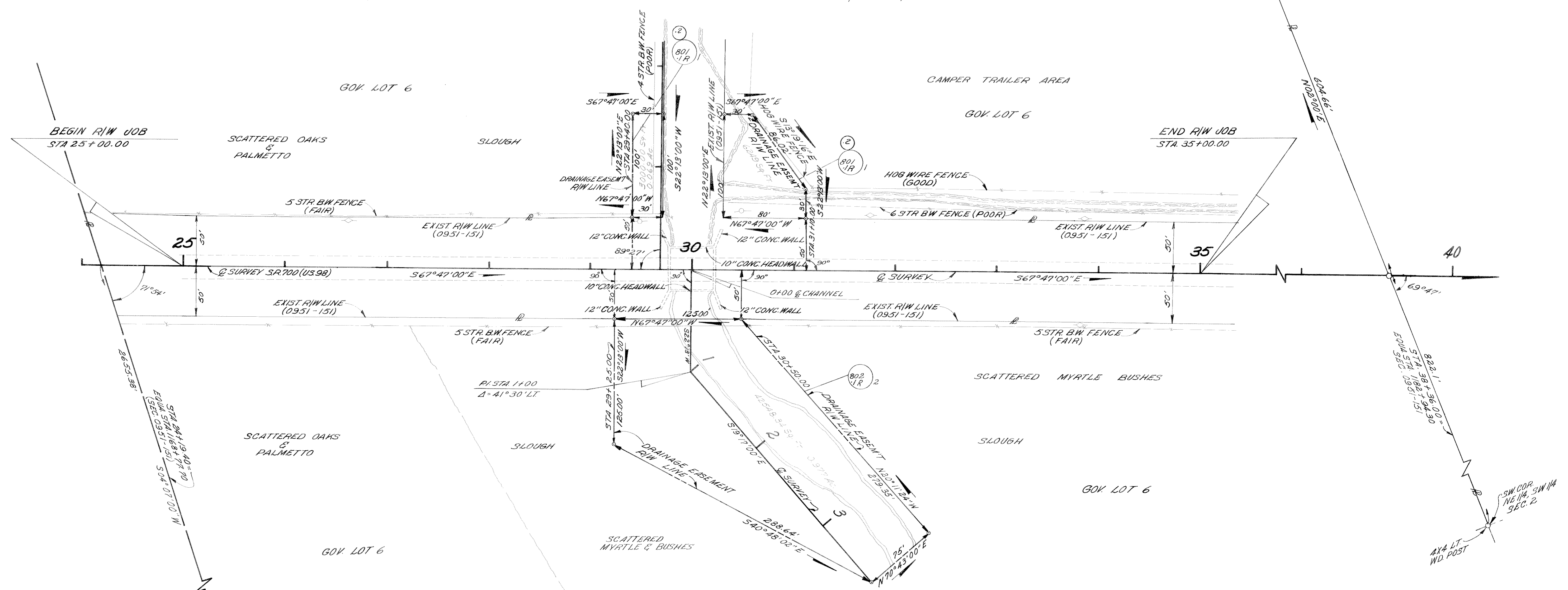


TABLE OF OWNERSHIP						
PARCEL NO.	SHEET NO.	NAME	AREA TAKEN	REMAINDERS		COMMENTS
				RIGHT	LEFT	
801-R	1	EEEE FISHING CAMP INC.	9249 Sq Ft	6.956 ac ±	11.30 ac ±	
802	1	LYNCH'S BROTHERS INC.	.977 ACRES		11.30 ac ±	

T36S-R32E
SCALE: 1" = 50'

NOTE:
 ① - R/W M.A.
 These symbols denote the location of underground Permanent R/W Markers (P.R.W.M.). The P.R.W.M. are 3/8" copper coated rods, above ground reference markers are located within 1' of the P.R.W.M., where possible.
 The locations of the P.R.W.M. were established by field survey in November, 1979. The original field notes are filed in the District 1 Office, State of Florida Department of Transportation, 500 Fow, Florida. Copies of these notes are filed in the office of R/W Engineering, State of Florida Department of Transportation, Tallahassee, Florida. Copies of these notes are filed in the office of R/W Engineering, State of Florida Department of Transportation, Tallahassee, Florida.
 Filed for record in the Office of the Clerk of the Circuit Court for the County of Highlands, State of Florida, in Map Book 13, Page 11 on the 12 day of March, A.D. 1980.
 Earl Rich
 Clerk of the Circuit Court
 Highlands County Florida



BEARING NOTE: BEARING SHOWING TAKEN FROM STATE PROJECT (0951-151)

UTILITY OWNERS:
 TELEPHONE: UNITED TELEPHONE SYSTEMS
 POWER: GLADES CO. ELECTRIC

BRIDGE (35)(34)
 030035

FIELD DATA TAKEN FROM F.B. # 11418

STATE OF FLORIDA DEPARTMENT OF TRANSPORTATION			
RIGHT OF WAY MAP			
STATE ROAD No. SR 700 (US 98) HIGHLANDS COUNTY			
DRAWN	BY	DATE	APPROVED BY
TRACED	C.M.	7-22-77	C.W. Nords de Oze
CHECKED	J. Shaw	8-31-77	Earl L. Ratliff
INDEXED			
SECTION 09110 - 2509			SHEET 1 OF 1

B.I. NO. 112455

REVISION	BY	DATE
ADD R PAR 802.1	TJM-CWB	11-14-77
ADD R PARCEL 801	TJM-KWG	10-26-77