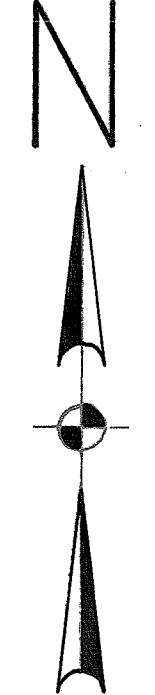


LEGEND

DESCRIPTIONS OF THE SECTION CORNERS ARE AVAILABLE FROM THE CENTRAL AND SOUTHERN FLORIDA FLOOD CONTROL DISTRICT. HORIZONTAL DATUM IS BASED ON THE STATE PLANE RECTANGULAR COORDINATE SYSTEM ESTABLISHED FOR THE EAST ZONE OF FLORIDA.

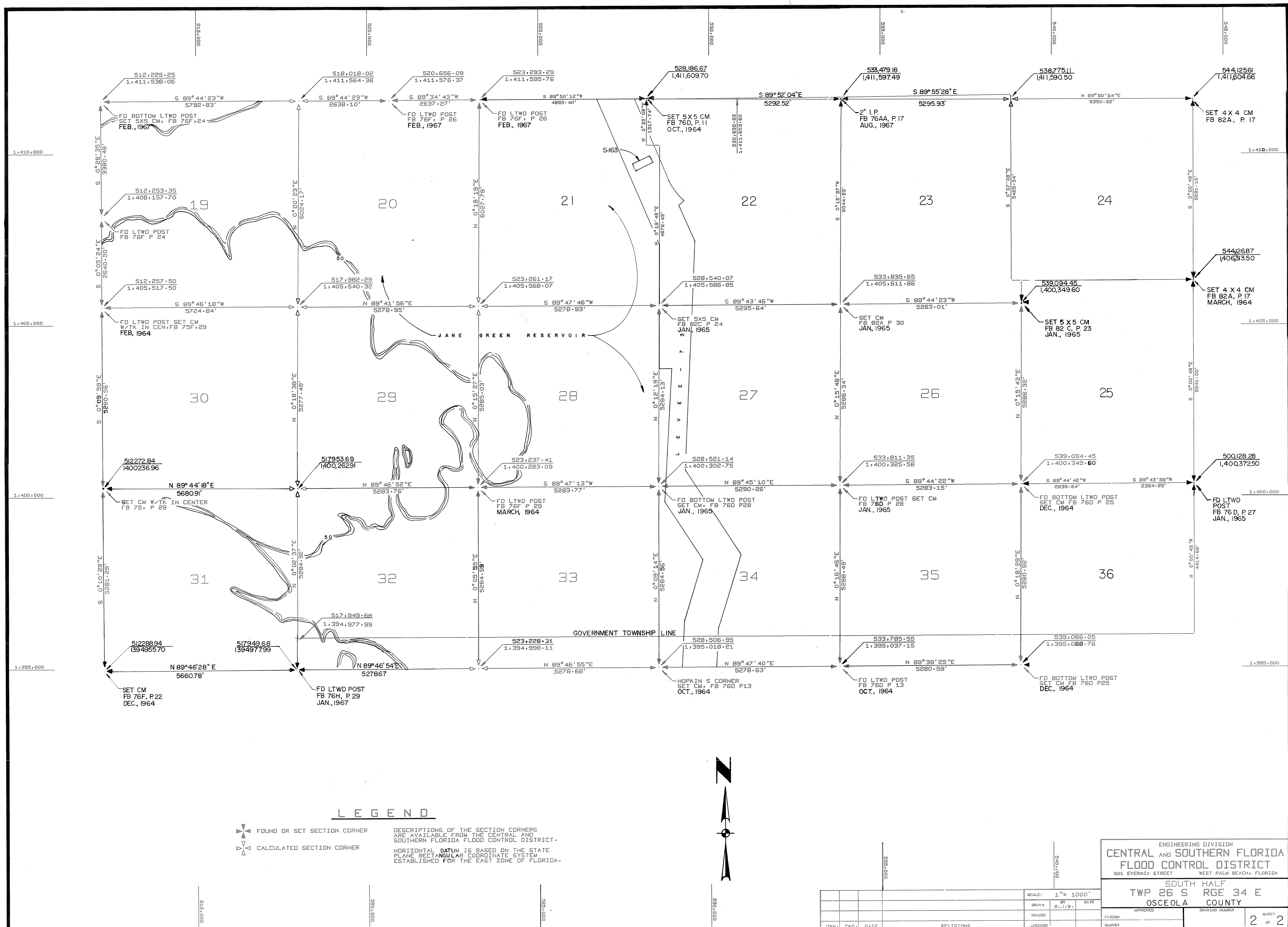


NOTE:
SECTION WORK SHOWN HEREON REFLECTS GOVERNMENT SURVEY.

ENGINEERING DIVISION
CENTRAL AND SOUTHERN FLORIDA
FLOOD CONTROL DISTRICT
301 EVERNIA STREET WEST PALM BEACH, FLORIDA

NORTH HALF
TWP 26 S RGE 34 E
OSCEOLA COUNTY

SCALE: 1" = 1000'	DATE	BY	DATE
TRACED	CHECKED	DESIGN	APPROVED
DRW	CHK	DATE	REVISIONS
DRAWING NUMBER			SHEET 2 OF 2



LEGEND

FOUND OR SET SECTION CORNER
 CALCULATED SECTION CORNER
 DESCRIPTIONS OF THE SECTION CORNERS ARE AVAILABLE FROM THE CENTRAL AND SOUTHERN FLORIDA FLOOD CONTROL DISTRICT.
 HORIZONTAL DATUM IS BASED ON THE STATE PLANE RECTANGULAR COORDINATE SYSTEM ESTABLISHED FOR THE EAST ZONE OF FLORIDA.

ENGINEERING DIVISION
CENTRAL AND SOUTHERN FLORIDA FLOOD CONTROL DISTRICT
 801 EVERNIA STREET WEST PALM BEACH, FLORIDA

SOUTH HALF
TWP 26 S RGE 34 E
 OSCEOLA COUNTY

SCALE: 1" = 1000'	DATE
DRAWN BY: R. J. W.	DATE
TRACED	CHECKED
DESIGNED	SURVEY
APPROVED	DRAWING NUMBER
OWN -	DATE
REVISIONS	

APPROVED: _____ DATE: _____

REVISIONS: _____

SHEET 2 OF 2