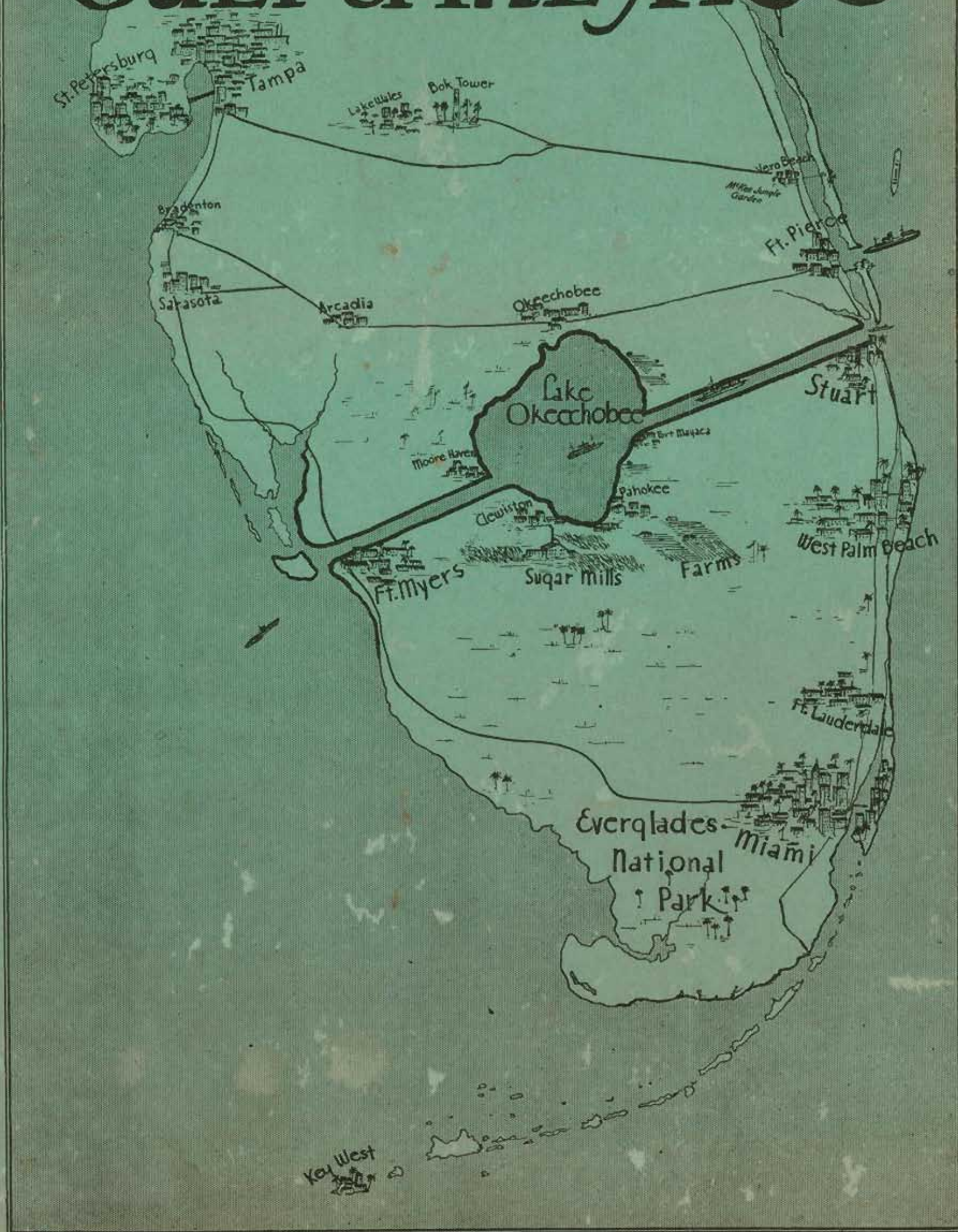


Please return to
H.D. Silverman

From THE ATLANTIC to the GULF of MEXICO





NOW OFFERING 5 MILES OF OCEAN-TO-RIVER PROPERTY ADJACENT TO ST. LUCIE INLET. MORE THAN 30 YEARS EXPERIENCE IN ACTUAL DEVELOPMENT AND SALES OF WATERFRONT ESTATES.

ERICH SCHROEDER, Realtor

E. B. DAVIS, Associate

LICENSED REAL ESTATE BROKERS AND PURCHASING AGENTS
 Offices: 206-207 Harvey Building West Palm Beach, Fla.
 Phone 4410
 Reference: Central Farmers' Trust Company, West Palm Beach

An Expression of CONFIDENCE

WE believe in the future of the Everglades.

Substantiating this belief, we have invested more than \$20,000 in equipment at Belle Glade. The new Cross-State Waterway is another milestone of progress for the Everglades section, opening it to the yachtsmen of the nation.

We wish to extend a sincere welcome to the boating visitors who will inspect the Everglades on this new route.

WE HAVE PREPARED OURSELVES TO SERVE YOUR EVERY NEED IN PASTEURIZED MILK, PENNOCK'S CERTIFIED MILK, HOMOGENIZED VITAMIN "D" MILK, BUTTERMILK, CHOCOLATE MILK, COTTAGE CHEESE, ICE CREAMS AND SHERBETS IN MANY FLAVORS AND COMBINATIONS OF FLAVORS.

ALFAR
 CREAMERY CO.

BELLE GLADE

PHONE 20

Stuart Daily News

STUART, FLORIDA, SATURDAY, FEBRUARY 27, 1937

Opening of Florida's One-and-Only Cross-State Canal Foreshadows Improvement of Stuart-Ft. Myers Harbors



By EDWIN A. MENNINGER

COMPLETION of Florida's one-and-only cross-State canal marks the realization of a dream. The idea of such a channel to link three great natural waterways — the St. Lucie River on the East Coast, the vast expanse of Lake Okeechobee (or Myakka, as it was known half a century ago), and the sweeping Caloosahatchee on the Gulf coast — goes back to the days when white men first settled the south half of the peninsula. But problems that early thinkers never dreamed of, arose to puzzle the empire builders, and the formal dedication in March 1937 of the waterway from Stuart to Fort Myers signalizes in reality the culmination of achievements stretching over almost fifty years.

It was back in the days of Governor Napoleon B. Broward that first steps were taken to reclaim the Everglades. It was in those years that Isham Randolph was called to make the survey that guided the Glades reclamation project of the next quarter century, and although Broward and Randolph are all but forgotten, their two names stand out as the farsighted leaders who started what the rest of us are finishing.

Actually, neither Broward nor Randolph ever gave much thought to the possibilities of cross-State navigation. They were interested in controlling a gigantic lake that had no natural outlet to the sea, and by exercising such control through a series of great canals, they hoped to throw open to cultivation the richest farming land in the United States — the muck lands of the Everglades. The dream of these pioneers was rudely shattered by circumstances far beyond their conception or control, and but for the terrible hurricane of 1928 that drowned 3,000 hapless residents of the Glades by literally dumping Lake Okeechobee in their laps, the Everglades might conceivably have gone back to the Indians.

But it was this same great misfortune of danger and death, that focused national attention on the Everglades, put \$20,000,000 of federal government funds into the picture to prevent future disasters, and opened the navigable waterway from Stuart to Fort Myers that is to be formally dedicated in March. With a flourish, Uncle Sam has completed an 8-foot channel, from 80 to 200 feet wide, across Florida from the Atlantic Ocean to the Gulf of Mexico. Dyke protection of the Everglades, plus water control by new methods, may make possible the solution of the State's reclamation problem, but that is another story. Certainly the Glades have staged a marvelous comeback since Uncle Sam's intervention, and new leaders are rising to carry on the traditions of Conners, Bryant & Greenwood, Dahlberg, Sherman, and a thousand others who have dreamed of empire.

Construction of the St. Lucie Canal began in 1921 when the fact dawned on the Everglades pioneers that canals through muck lands were useless—they refused to carry water out of the lake. Four of them had been dug, and were utterly worthless. The St. Lucie was completed in 1924 and for 13 years has been the only functioning outlet from Lake Okeechobee to the sea.

The Caloosahatchee River was connected to Lake Okeechobee by two linking canals fifteen years ago, but these proved inadequate to discharge water, and the Caloosahatchee itself was so crooked that it held the water back instead of discharging it. Tedious progress was made in boom days by the Everglades Drainage District, trying to open some tiny ghost of a channel into the Gulf outlet, but when taxes ceased to be paid in the first depression years, the efforts collapsed.

In 1930 Congress was induced to cooperate in a flood control program, and it was contemplated that \$3,000,000 of federal funds would be spent. Before folks really understood what was happening, the government had tackled the problem, had achieved as much for the cause of navigation as for the cause of flood control, and had spent more than six times the originally contemplated budget.

The end is not yet. Improvement of the harbor facilities at both ends of this gigantic waterway are inevitable corollaries of the farsighted improvement program that has been car-

(Continued on Last Page)

The English Tavern

SOUTH END ROOSEVELT BRIDGE, STUART

WELCOMES THE YACHTSMAN

ATTRACTIVE DINING ROOM AND GRILL

SPECIAL PARTIES—LUNCHEONS and DINNERS
PRIVATE DINING ROOM

AMPLE PARKING SPACE



ENJOY Sailfishing

in the
GULF STREAM

Safe, reliable cruisers for charter. Write, wire or
Phone 47-J for Reservations.

MARINE WAYS

MARINE SUPPLIES

STORAGE

REPAIRS

BOAT BUILDING

Toley's Boatyard

Salerno, Fla.

Martin County Forges Ahead

Investigate the opportunities for building in the
beautiful St. Lucie River Region.

Plan to Make Your Home in This Yachting Wonderland!

We will be glad to assist with advice
and bids on plumbing and sheet metal
work.

Stuart Metal Works

PHIL PENCE, Proprietor

COMPLETION OF THE

Cross-State Waterway

is a
MARK OF PROGRESS
for
SOUTH FLORIDA

Fort Pierce Financing and Construction Co.

208 Orange Ave.

Fort Pierce



The Commercial FISHING Industry of Martin County

PRODUCING AN ANNUAL REVENUE OF MORE THAN \$1,000,000, REQUESTS THE COOPERATION OF OFFICIALS IN CHARGE OF THE LAKE OKEECHOBEE PROJECT TO MAINTAIN DISCHARGE OF FRESH WATERS FROM ST. LUCIE CANAL AT A MINIMUM DURING THE FISHING SEASON FROM NOVEMBER TO MARCH.

THE COMMERCIAL FISHERMEN'S ASSOCIATION OF MARTIN COUNTY

Jupiter Island is Show Place of Martin County



On the left the Intracoastal Waterway between St. Lucie Inlet and Palm Beach passes through Beautiful Hobe Sound with Jupiter Island in the foreground. Hobe Sound Yacht Club has excellent dockage and fine fresh water.



This view from the ocean side shows the Island Beach Club, Island Inn and a portion of the Jupiter Island Golf Course. Jupiter Island rivals Palm Beach in beauty of its Tropical Setting and Estates.

The One Thing In Florida You Must Not Miss!



A True Tropical Vista



Top: Rare Lilies Grown in Lagoons
Bottom: Leaf of Elephant Ear Plant

How to Get the Most
Out of
FLORIDA

VISIT THE McKEE JUNGLE GARDENS

Just One Mile South of Vero Beach, on Federal Highway No. 1

80 Acres of Natural Jungle!

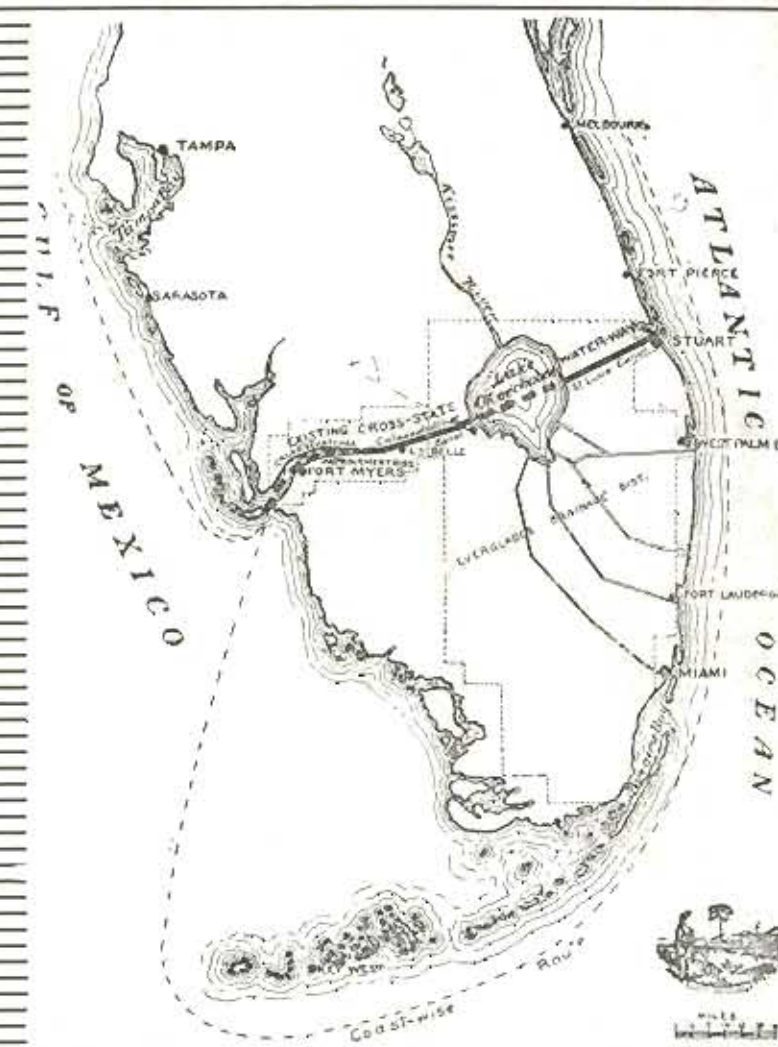
AN AMAZING ARRAY OF EXOTIC TROPICAL BEAUTY COMBINED WITH HUNDREDS OF RARE AND UNUSUAL PLANTS FROM ASIA, BORNEO, AFRICA AND ALL PARTS OF THE TROPICAL WORLD.

SEE GROWING HERE: YOUR MORNING COFFEE, AIR PLANTS LIVING IN THE AIR-ON AIR, VANILLA FOR YOUR CAKES, INCENSE PLANTS FOR THE PARLOR, TREES FROM WHICH YOUR RUBBER TIRES ARE MADE, BEAUTIFUL WATER LILIES AND MANY MORE STRANGE SIGHTS.

The Hour Spent Here Is One You'll Remember!

Inviting Your Participation...

In March, 1937, the Federal Government will open to navigation the Cross-State Route for yachts between Stuart on the Atlantic and Fort Myers on the Gulf of Mexico, attended by a celebration at both cities, and at points enroute.



THIS BROCHURE of Aerial Views of the new South Florida Cross-State Waterway is published to better acquaint the people of Florida and the Nation with a new artery for pleasure craft and commerce, cutting 255 miles from the former route, with unlimited potential possibilities as a Trans-State Ship Canal.

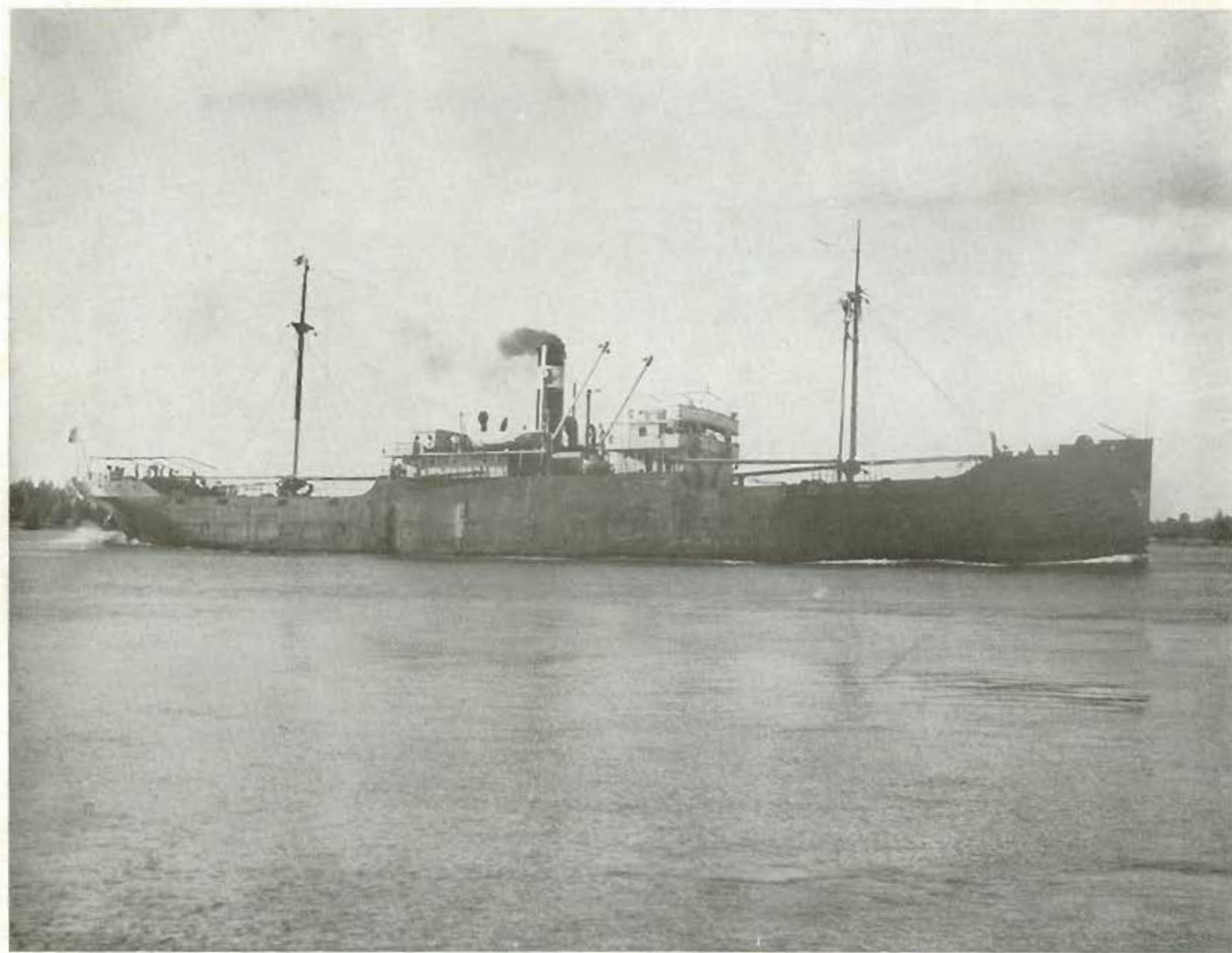
SOUVENIR EDITION of
The Stuart Daily News

Published February 27, 1937

For the Cross-State Canal Celebration

MARCH, 1937

FORT PIERCE—a Deep Water Port



Bull Line Freighter Entering The Deep Harbor At Fort Pierce



Freighters Loading Fruit And Vegetables In Port of Fort Pierce

Eastern Terminus of the Cross-State Waterway



Fort Pierce Harbor, Inlet In Background, Showing Causeway Leading To Bathing Beach.



Business District of the City of Fort Pierce with Indian River Sweeping To Northward

The CITY OF STUART

ATLANTIC GATEWAY
To the GULF OF MEXICO



GREET'S THE NATION'S YACHTSMEN

For Your Recreation STUART OFFERS

(1) Florida's Finest Fishing in adjacent waters. Write Chamber of Commerce for free booklet on sport fishing.

(2) Modern moving picture theatre, and regular programs of community entertainment.

(3) Excellent resort hotels.

(4) A 47-acre park and community recreation hall where cards and dancing are enjoyed by visitors.

(5) Stuart Tourist Club, gathering place for winter visitors.

(6) Ocean bathing accessible by automobile.

The City of STUART Welcomes Its Cruising Guests From Atlantic and Gulf Ports . . .

and the officials of the United States government, U. S. Engineer Dept., and Okeechobee Flood Control District here at the formal opening of the Stuart to Fort Myers cross-State channel. Especially to the yachtsman or those planning to take the cross-state trip in the future, we proffer a friendly invitation to make Stuart your headquarters while enjoying the network of cruising waters which radiate from this boating center.

For Your Convenience STUART OFFERS

(1) Modern, well-equipped marine service plant, with two marine ways, machine shop, fresh water, fuel and storage facilities.

(2) Up-to-date stores handling marine supplies, groceries and meats, dry goods, hardware and refreshments. Ice delivered to your berth.

(3) A municipal pier at which free dockage and fresh water are available.

(4) A sheltered yacht basin in Frazier Creek, bulkheaded and calm no matter what winds blow.

(5) Information at Chamber of Commerce.

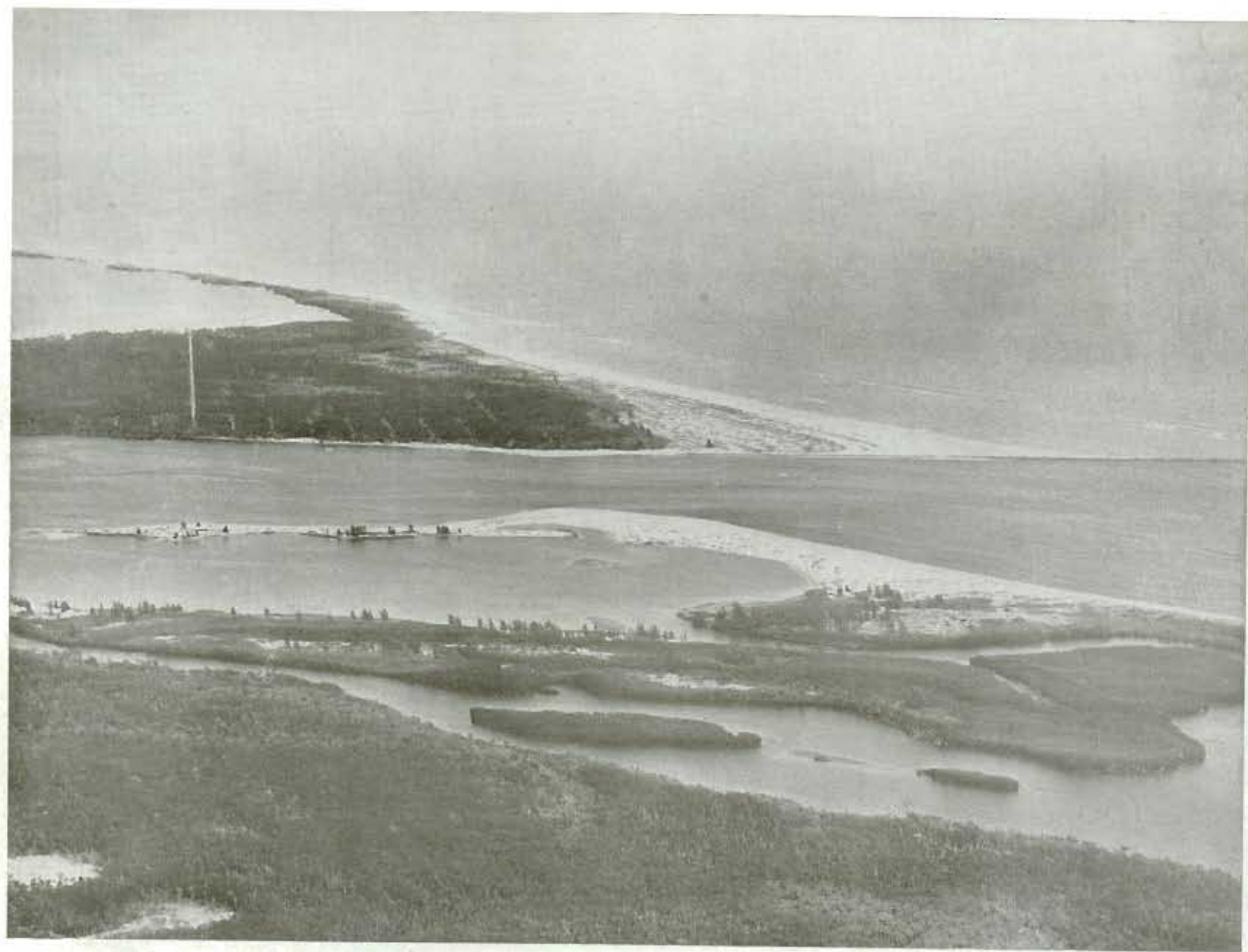
STUART CITY COMMISSION

H. H. HIPSON, Mayor

H. C. BECKMAN

THEODORE DEHON

STUART — On the St. Lucie River



St. Lucie Inlet, World Famous For Its Fishing, Provides An Ocean Entrance for Small Craft. Here the Waters of Lake Okechobee Meet the Atlantic.



The St. Lucie River Estuary Leading to Stuart, Six Miles Upriver. Here, at Sewall's Point in The Foreground, Is the Junction of the Intracoastal Waterway and the St. Lucie. Stuart Bridge in Background.

Atlantic Gateway to the Gulf of Mexico



Sewall's Point is a beautiful, six-mile peninsula extending between St. Lucie and Indian Rivers. Noted as a winter resort section, it boasts many fine estates.



The Slogan of the City of Stuart is "Florida's Finest Fishing." Situated at the confluence of the North and South Forks of the St. Lucie River, the community is practically surrounded by excellent fishing waters. Downstream is St. Lucie inlet, world famous fishing grounds. Offshore lies the Gulf Stream, where more than 200 sailfish were caught by visiting anglers in the 1936-37 winter season. North and South forks of the river, and adjacent lakes, afford fine black bass fishing. In line with its program of furnishing recreation for winter guests, Stuart is bringing to completion a 47-acre park, including a community center, attractively landscaped lakes, tennis, shuffleboard and diamondball courts. Further information about Stuart and

Martin County may be secured by writing H. B. Kraft, secretary of the Chamber of Commerce.

Bridge Clearances, Navigation Markers

U. S. LIGHTHOUSE SERVICE MARKS CROSS-STATE LINE

The following information regarding navigation markers and lights on the Cross-State Waterway was furnished by William W. Demeritt, Superintendent of Lighthouses, Key West, in advance of the opening, while work on the project was still underway:

From Stuart to the St. Lucie Canal Lock No. 2 the route at present is marked with beacons. Lights have been approved for St. Lucie River and these will be installed as soon as materials can be obtained and equipment is available.

From St. Lucie Canal Lock No. 2 to Lake Okeechobee there are banks of the canal on either side and no aids are necessary.

From St. Lucie Canal Light No. 1, at the entrance to Lake Okeechobee, the Trans-State route is southwest across Lake Okeechobee to Rock Reef South Light 4, thence westward through a storm gate to Moorehaven. Along this route there are five lights and nine beacons.

From Moorehaven you then proceed through Three-Mile Canal, with high banks on each side, thence across Lake Hicpochee to Caloosahatchee River. In Lake Okeechobee there are two lights, one at each entrance, and 9 beacons.

From Lake Hicpochee down Caloosahatchee River to Lock No. 3, the banks of the river on each side are sufficient to guide and no beacons are necessary.

From Lock No. 3 to Fort Myers there are four lights and 62 beacons.

Each beacon is a single pointer on pile. Each lighted structure is a lantern box and daymark on 5-pile dolphin, 16 feet high.

All structures are painted to conform to the uniform system adopted for intracoastal water marking. Daymarks on lighted structures are black squares with yellow borders on port or left hand, proceeding from east to west, and north to south. A band on single piles is black on port and red on starboard, the lower portion is aluminum. Single piles have a yellow band at the top above the pointer. Each beacon has reflector buttons, green on port, red on starboard.

The lights on this route are in the order given:

St. Lucie Canal Light 1—Flashing white every 4 seconds.
Rock Reef North Light 3—Flashing white every 4 seconds.
Rock Reef South Light 4—Group of 2 red flashes every 6 seconds.
Moorehave South Channel Light 5—Flashing green every 4 seconds.
Moorehave South Channel Light 14—Group of 2 red flashes every 6 seconds.
Lake Hicpochee Light 2—Flashing red every 4 seconds.
Lake Hicpochee Light 12—Flashing red every 4 seconds.
Thompson's Cutoff Light 43—Flashing green every 4 seconds.
Beautiful Island Light 53—Flashing green every 4 seconds.
Old Highway Light—Flashing green every 4 seconds.

NOTE: The number of the four last lights may have to be changed at a later date to keep in serial order with lights and beacons from Moorehaven westward to Fort Myers.

At a later date Rock Reef North Light 3, Rock Reef South Light 4, and Moorehaven South Channel Light 5 will be changed to iron pile structures, with white pyramidal superstructures, 27 feet high. The wooden 5-pile dolphins were installed at these sites temporarily in order that all lights and beacons on the Trans-State Waterway would be in place for the opening of this waterway on February 22.

Other changes have been approved for lights and beacons on Lake Okeechobee. All materials are on hand and our small Lighthouse tender POINCIANA, with floating piledriver are now at work on Lake Okeechobee. All the authorized new aids and changes in present aids will be completed as rapidly as weather will permit.

The Canal Complete

Miami News:

"No matter what happens to the cross-State ship canal project, linked in the public mind with Passamaquoddy," says the St. Petersburg Independent, "there will be a canal across Florida this winter." And the Independent, strangely enough, is not worried over this prospect. The canal to which it is referring is the eight-foot yacht canal from Fort Myers to Stuart, work on which is being completed this winter. "Unhindered by the publicity that has attended the proposed cross-State ship canal," says the Independent, "this new waterway will be of greater importance to Florida. Its primary purpose is to facilitate drainage of the Everglades for agricultural and flood-control purposes. If necessary it could at small additional cost be deepened to make a practical ship canal which would have many advantages of the Ocala project without any risk of danger to the water supply." The newspaper then dilates on the natural beauties which will face yachtsmen plying their way from coast to coast. "From the shores of the new waterway, yachtsmen will see tall river ferns, Florida pines, tall, feathery-topped palmetto palms, some of which rise to a height of 40 feet; orchids, jasmine, green briars and Spanish moss in profusion. Razorback hogs run wild in the woods and dine on rattlesnakes. Alligators, water turkeys, wildcats, panthers, bears, deer, white ibis, blue herons, egrets and many other species overrun much of the route." Few are likely to pay much attention to the possibilities of ever changing the yacht canal into a commercial waterway, but nobody can fail to realize the vast natural and publicity value which the yacht canal as such will be to this State.



BRIDGE DATA FORT MYERS TO MOOREHAVEN LOCKS

Edison Memorial Bridge at Fort Myers 15 miles east of the Gulf of Mexico is of bascule type with an 80-foot center channel, and 60-foot side channels. There is a clearance of 10 feet above mean low water, 5 feet above high water.

Sixteen miles east of the mouth of the river is the S.A.L. Railway Co. bridge at Fort Myers, of swing type with 60-foot side channels, 7.6 foot clearance at mean low water, 6-foot at high. Also the Lees county bridge: swing type, 50-foot channel, clearance 7-feet at low water, 5 feet at high water.

Twenty-one miles east of the Gulf is the Atlantic Coast Line Railway bridge: swing type, 50-foot channel, 5-foot clearance at low water, Olga, 27 1/2 miles east, state bridge, swing type, 55-foot channel, 7.3 foot clearance.

Alva, 34.4 miles, county bridge, swing type, 60-foot channel, 9-feet clearance at low water, 7-feet at high.

Fort Denaud, 41 miles, county bridge, swing type, 56-foot channel, 12-feet low, 5-feet high.

LaBelle, 46 miles, state bridge, swing type, 50-foot channel, 10-foot clearance.

Ortona, 55 miles, Atlantic Coast Line Railway bridge, swing type, 50-foot channel, max. clearance 11 feet, minimum, 7.

Moorehaven, 70 miles, state bridge, swing type, 50-foot channel, 6-foot clearance.

Moorehaven, 71 miles, Atlantic Coast Line Railway bridge, swing type, 50-foot channel, 4 feet max., 1 foot, min.

INFORMATION ON BRIDGES STUART TO PORT MAYACA

At Stuart, 6 1/2 miles up the St. Lucie, the yachtsman will find a Florida East Coast Railway bridge and the State Highway bridge for U. S. No. 1. Both have bascule type draws. The railroad bridge, 80 high water, 6 1/2 feet. Clearance at high water on the highway bridge is 9.8.

There is a state road department bascule type drawbridge at Palm City 8 1/2 miles from the mouth of the St. Lucie, with 50-foot channel and 13-foot clearance.

At Indiantown, on St. Lucie canal, 26 miles from the mouth of the river, there is a state road department span, 50-foot channel, and 28-foot clearance. A mile further west is the Seaboard Air Line Railway bridge, swing-type, 56-foot channel, and 23-foot clearance.

At Port Mayaca where the canal enters Lake Okeechobee, there are two bridges, a Florida East Coast railway vertical lift structure, channel 56-feet, clearance from a 23-foot minimum to a 63-foot maximum; and a state road department swing bridge, with 53-foot channel and 28-foot clearance.

U. S. RECORD SILVER KING



The largest tarpon ever caught in the United States, a 223-pounder, was landed in the St. Lucie river near Stuart by Edward Trainer, Philadelphia sportsman.



Waterfront Properties

on

SCENIC INDIAN RIVER DRIVE

Thirty Years Experience Selling Real Estate
In Fort Pierce and St. Lucie County.

Koblegard Investments, Inc.

119 S. 2nd St.

Telephone 25

FORT PIERCE, FLORIDA



BULL LINES

The Pioneer Steamship Line of

FORT PIERCE

Provides Fast, Economical Transportation for
Perishables and General Cargo

to

NEW YORK, BALTIMORE and PHILADELPHIA

Steamers Equipped with Refrigeration and
Ventilation

—Also—

Regular Service for General Cargo to Port Newark,
N. J. and from Philadelphia, Baltimore, Charleston,
Jacksonville, Miami, Corpus Christi, Beaumont,
Lake Charles and Pensacola

The Bull Steamship Linss

A. H. BULL & CO., Inc., General Agents

Municipal Pier

Phone 132

Fort Pierce

Backus Sport Skiff 24



A Real Fishing Boat

Fast and Seaworthy

POWERED BY "93" CHRYSLER

SPEED 27 MILES PER HOUR—DRAUGHT 20 IN.
CEDAR PLANKING, NATURAL MAHOGANY
TRIM, CHROMIUM PLATED HARDWARE.

BUILT IN FLORIDA BY FLORIDANS TO MEET
FLORIDA REQUIREMENTS.

PRICE COMPLETE \$2,500

(Subject to change without notice)

Backus Boat Co.

FOOT OF AVENUE C

FORT PIERCE,

FLORIDA

YACHTING

and

Good Food

always go together

CHISHOLM'S GRILL ON THE FEDERAL HIGHWAY IN THE CENTER OF STUART JOINS THE REST OF MARTIN COUNTY IN EXTENDING A SINCERE GREETING TO THE YACHTSMEN AND VISITORS DURING THE CROSS-STATE CELEBRATION, AND TO GUESTS FROM ALL OVER THE UNITED STATES USING THIS ROUTE IN THE FUTURE.

Chisholm's

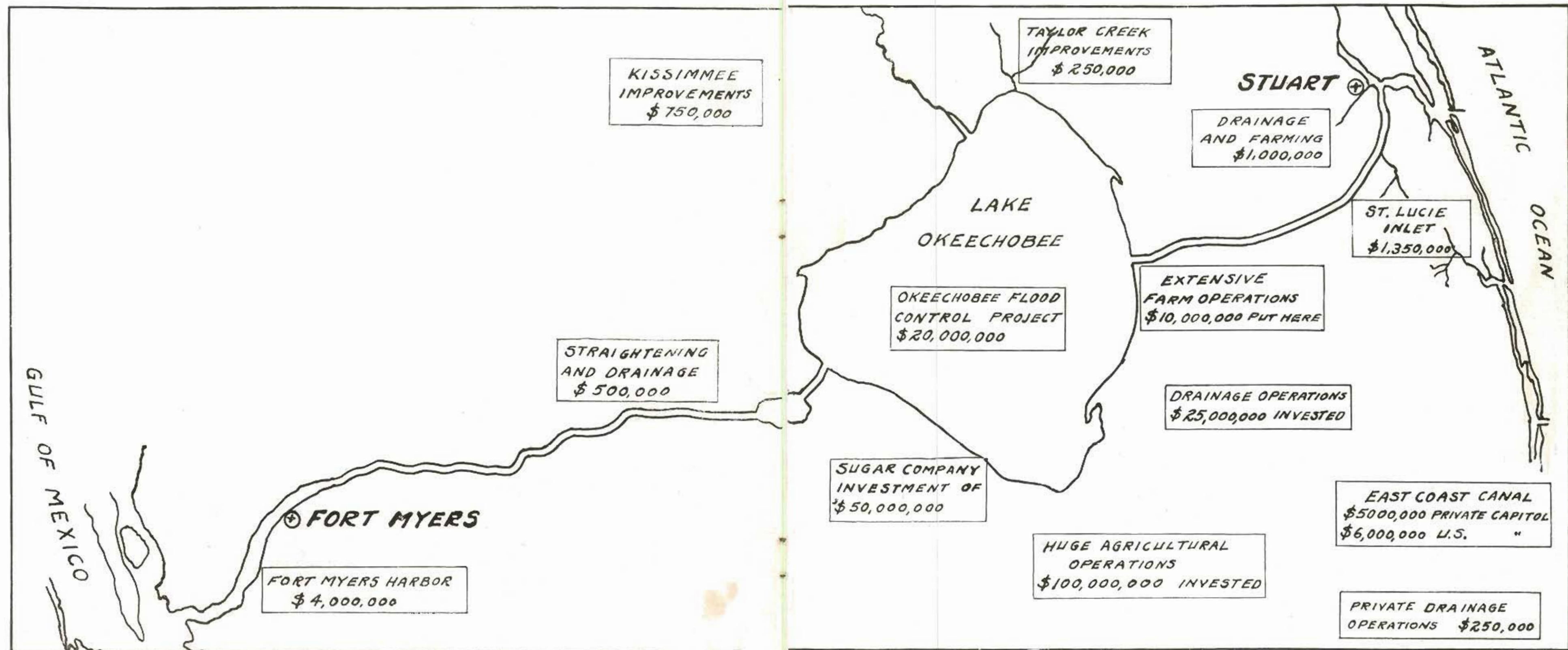
DELICIOUS WELL-COOKED FOOD

FEDERAL HIGHWAY

STUART, FLORIDA

Quarter Billion of Investments

MADE ALONG THE ROUTE OF THE SOUTH FLORIDA CROSS-STATE CANAL



FROM STUART TO FT. MYERS

We Submit that the United States Government
Should Protect and Extend Investments Along This Existing Waterway
Rather Than Experiment on a Dream

MARTIN COUNTY COMMISSION

R. L. WALL, Chairman

R. G. SPICER

W. A. PALMER

F. W. HILDEBRAND

R. I. HAMRICK

MARTIN COUNTY STATISTICS

Area in acres	354,813
Population (1935 Census)	5,126
Railroad mileage in county	77
Paved highway mileage in county	144
Atlantic Ocean frontage in miles	23
Lake Okeechobee frontage in miles	16
Length of St. Lucie Canal, miles	28
Average width St. Lucie Canal, ft.	200
Minimum depth St. Lucie Canal, ft.	8

CLIMATE STATISTICS ON MARTIN COUNTY

Average annual temperature	73
Average seasonal temperature:	
Summer	80.8
Winter	59.5
Autumn	72.5
Spring	70.4
Liability to frost: Government records show that 4 1/2 hours per year have a temperature of 32 degrees. There are no records of lower temperatures.	
Average annual rainfall, inches	58
Prevailing winds are southeast.	
High winds occur occasionally in late summer, but the U. S. Weather Bureau says "severe storms annually in Florida" is a bogie.	
Martin County is a healthy place to live.	

East Locks of the St. Lucie Canal



Here Your Craft Will Be Lifted From Sea Level to the Control Depth of St. Lucie Canal at the East Locks 6 1/2 Miles West of Stuart.



St. Lucie Canal Between the East Locks and Port Mayaca Showing Indianatown Highway Bridge and Seaboard Railway Bridge

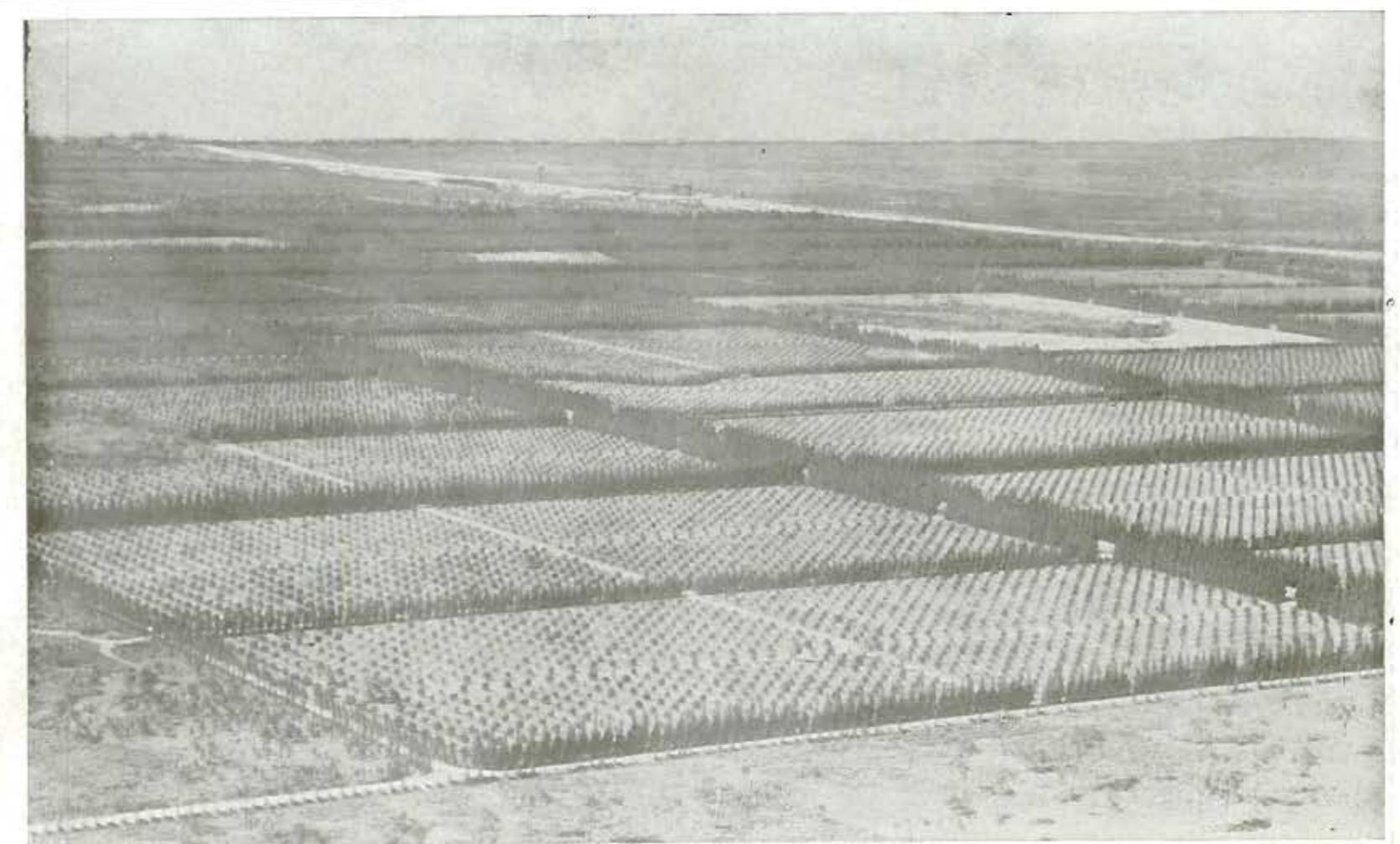


This Picture Shows the Broad Canal With High, Wooded Shores Between Stuart and Lake Okeechobee

PORT MAYACA—on Lake Okeechobee



Here The Yachtsman Gets His First Glimpse of Lake Okeechobee And Makes His Choice of Three Routes Across The Lake



THIS MODEL DEVELOPMENT IS OPEN FOR INSPECTION

Welcoming the Yachting Visitor and Inviting His Attention to the Citrus and Agricultural Development at Port Mayaca. Cypress Lodge, a Modern Country Inn, Offers Tasteful Hotel Accommodations. Golf Course in Connection. The View Above Shows Orange Groves with Protective Windbreaks.

The Mayaca Corporation

PAUL HOENSHEL, Manager

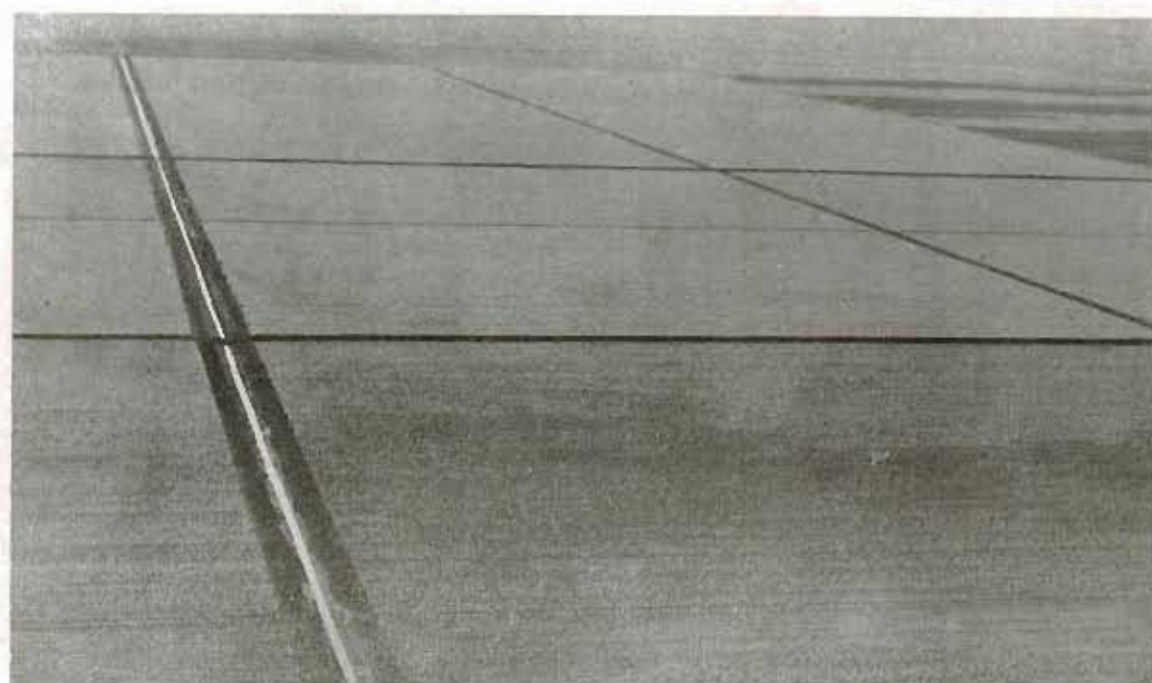
PORT MAYACA

FLORIDA

Rich Farm Lands of the Everglades



Extending for Mile Upon Mile, the Richest Farming Land in the World Produces Winter Vegetables for Northern Markets. This Agricultural Empire Has Been Reclaimed in a Generation from the Sawgrass Wastes of the Everglades.



Seen From The Air, The Cane Fields Form This Geometrical Pattern.



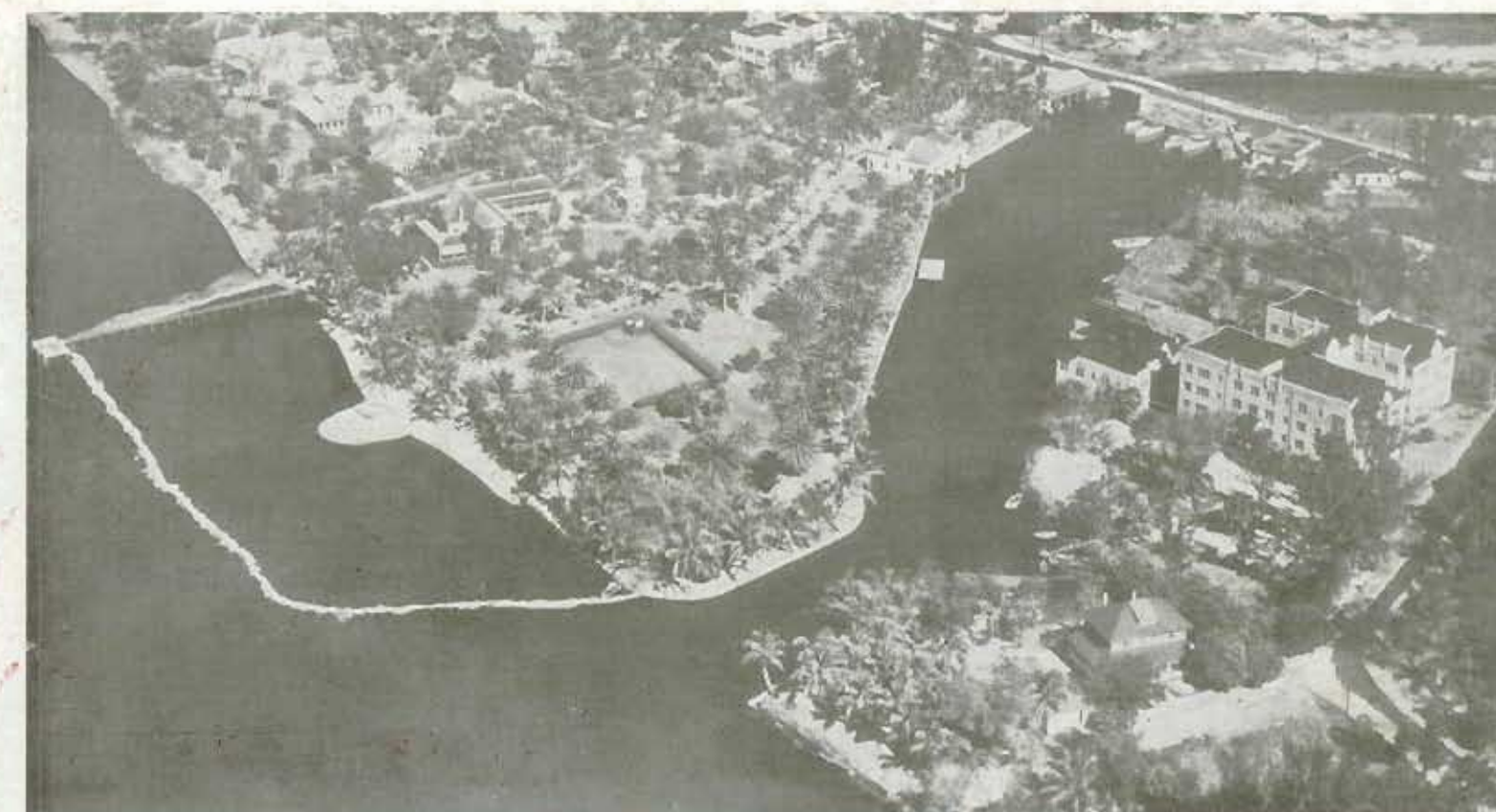
Interior View of Clewiston Mill Where 5,000 Tons of Cane are Ground Daily, Resulting in a Daily Production of More Than 1,000,000 pounds of Raw Sugar.



The Cane Often Runs From 16 to 18 Feet in Height.

UNITED STATES SUGAR CORPORATION

Clewiston, Fla.



Plan to Spend Your Next Florida Vacation At the **FRANCE** APARTMENTS

AIR VIEW SHOWS PROTECTED YACHT BASIN—PRIVATE SHELTERED BOAT SLIPS AVAILABLE.

COMFORTABLE APARTMENTS, ELECTRIC REFRIGERATION, SOLARIUM, SITUATED IN THE CENTER OF THE ST. LUCIE YACHTING REGION.

Write W. O. JOHNS, Resident Manager, For Rates and Reservations.

WE TAKE PLEASURE

IN WELCOMING STUART'S
MANY VISITORS ON THE
FORMAL OPENING OF
THE NEW

STUART-FT. MYERS
CROSS-STATE
WATERWAY

FOR YACHTS

CITIZENS BANK
OF STUART

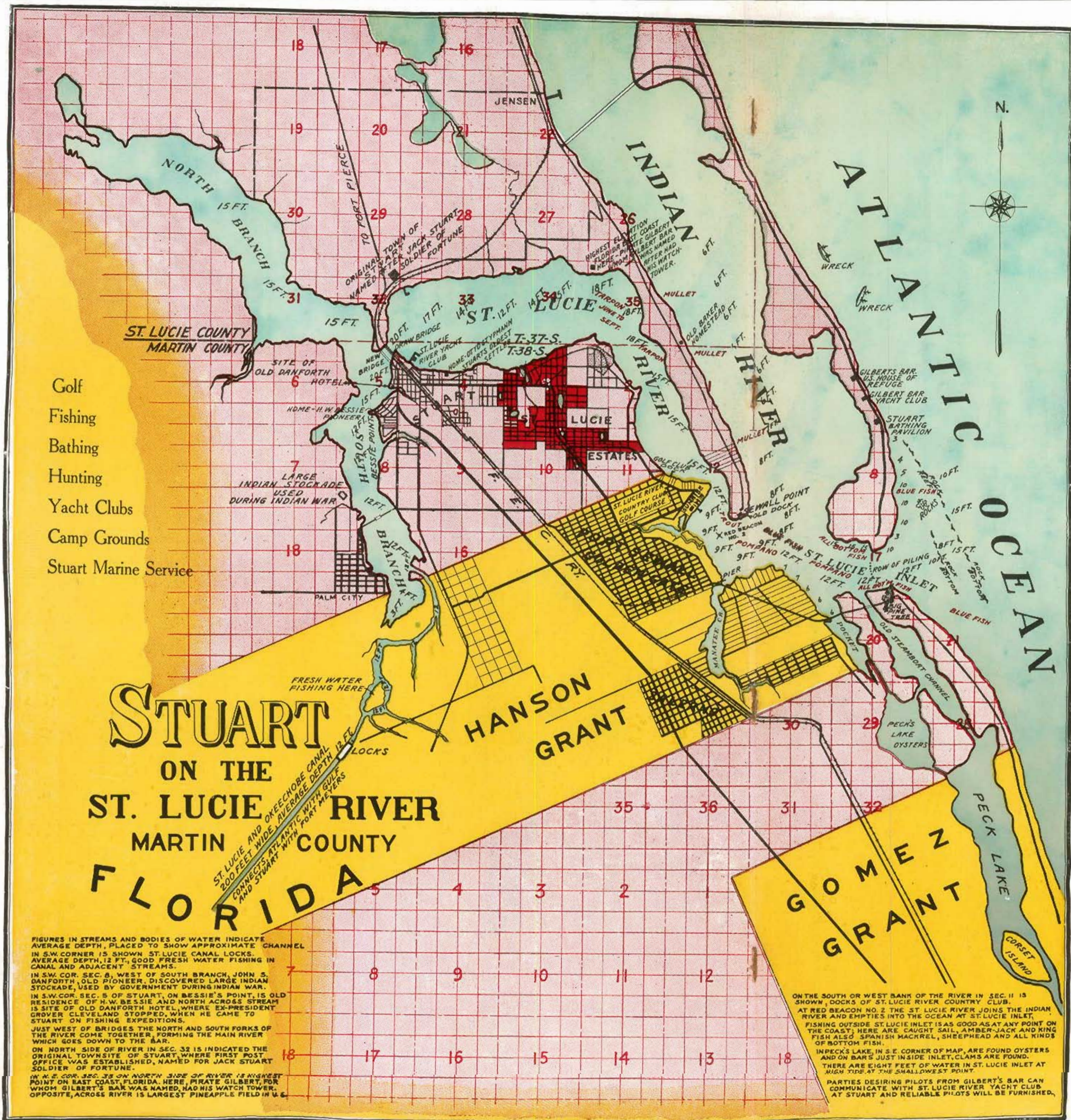
Welcoming the Yachtsmen to Stuart

AND THE ST. LUCIE
RIVER AREA

WE TAKE PLEASURE IN EXTENDING A WARM
GREETING TO THE YACHTING VISITOR ON
THE OCCASION OF THE OPENING OF THE
CROSS-STATE CANAL BETWEEN STUART AND
FORT MYERS. YOU WILL FIND US READY AND
WILLING TO SERVE YOU.

Ben F. Eckess

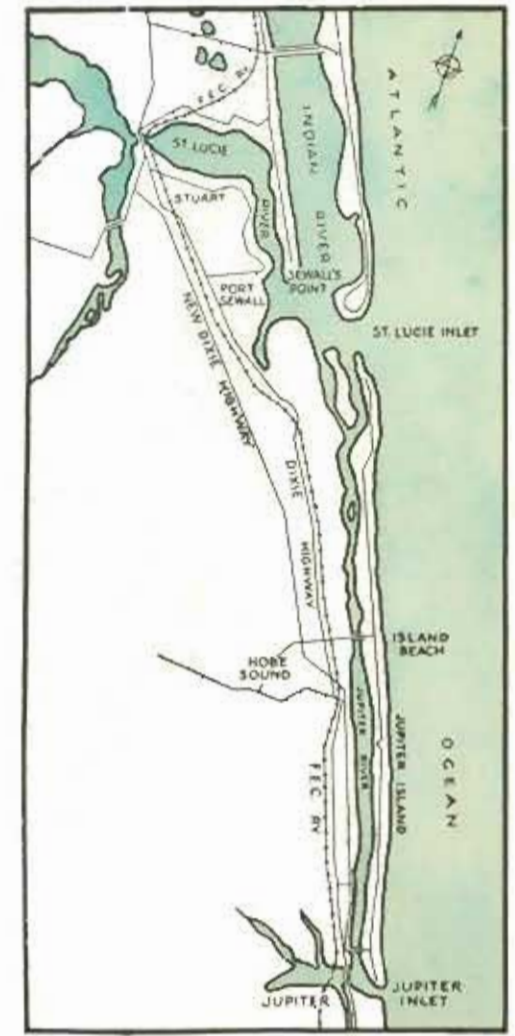
Stuart's Shopping Center



Beautiful
Properties
On the
St. Lucie and Indian Rivers



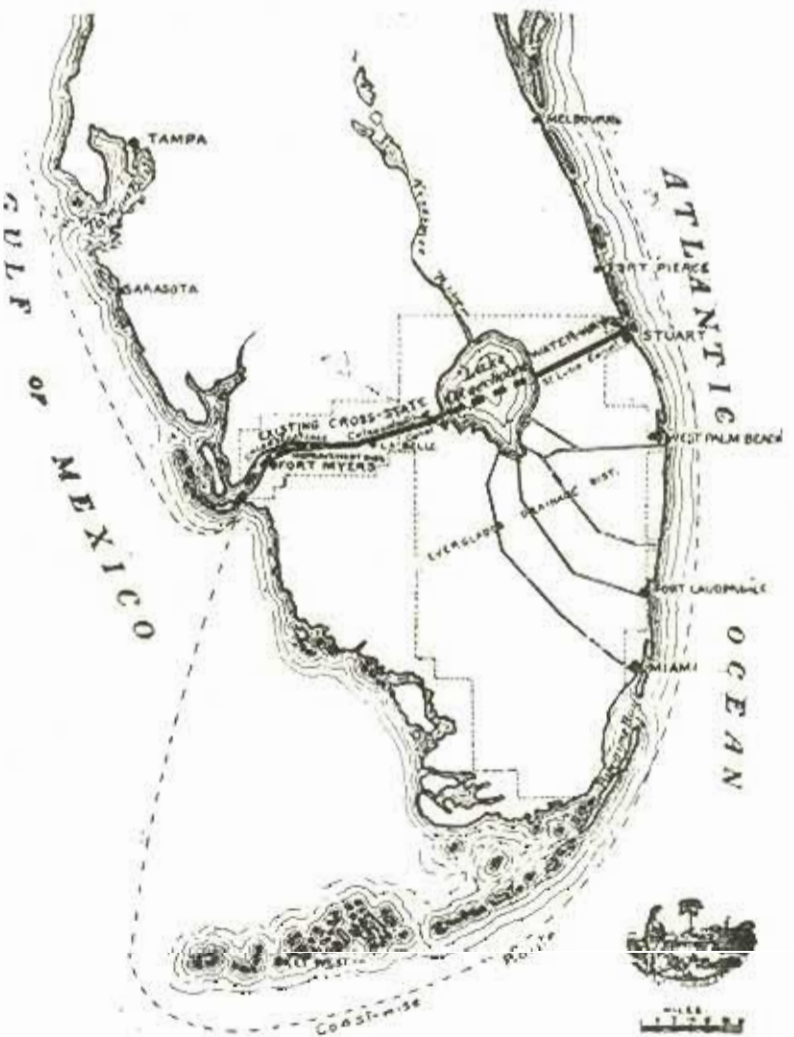
AT
STUART
SEWALL'S POINT
AND
PORT SEWALL
—
OCEAN FRONTAGE
AT
JUPITER ISLAND
AND
HOBE SOUND



Theodore Dehon & Son
St. Lucie and Flagler Ave. STUART, FLORIDA

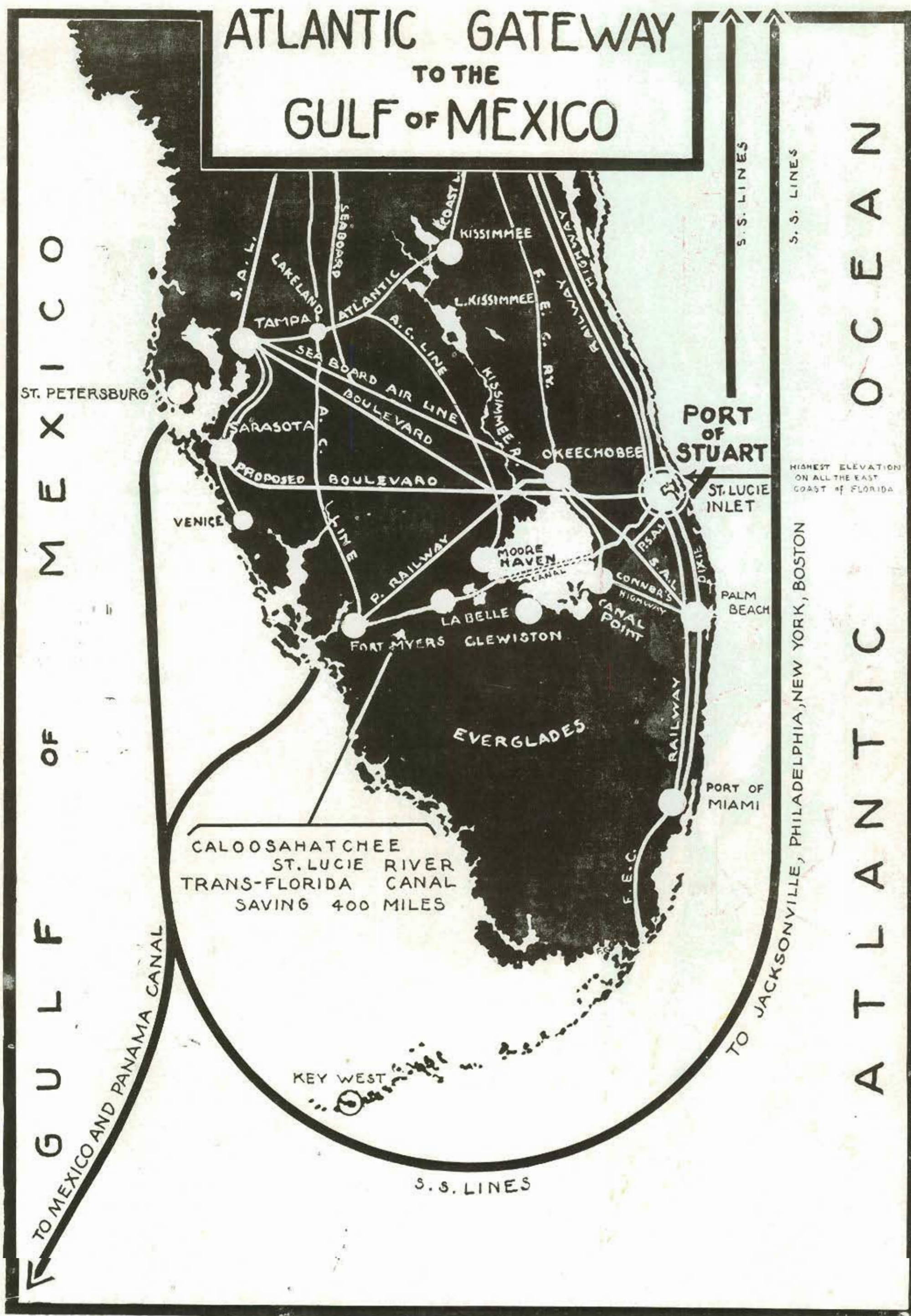


RIVER TO RIVER
ESTATES
On
SEWALL'S POINT
—
JUPITER ISLAND
RIVALS
PALM BEACH
in
EXCLUSIVENESS
and
BEAUTY

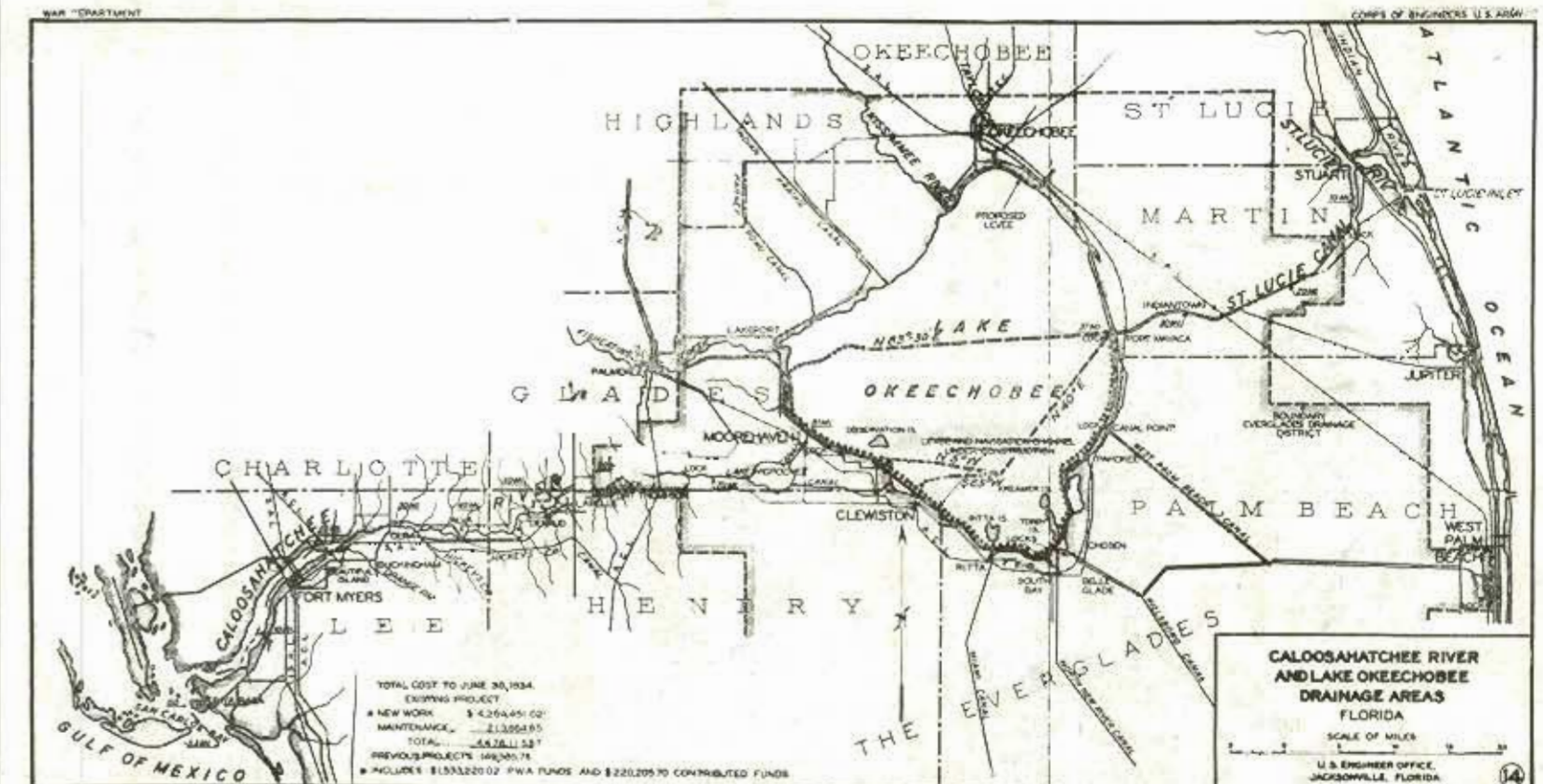


GREATER STUART

ATLANTIC GATEWAY
TO THE
GULF OF MEXICO



Welcoming the Yachtsman to the
St. Lucie River Region



We Take Pleasure

in extending a warm and sincere greeting to yachting visitors from all ports.

Inspect the yachting paradise of the St. Lucie and Indian Rivers.

Complete Information on Local Boating Conditions.

STUART MARINE SERVICE

STUART, FLORIDA



OUR FACILITIES

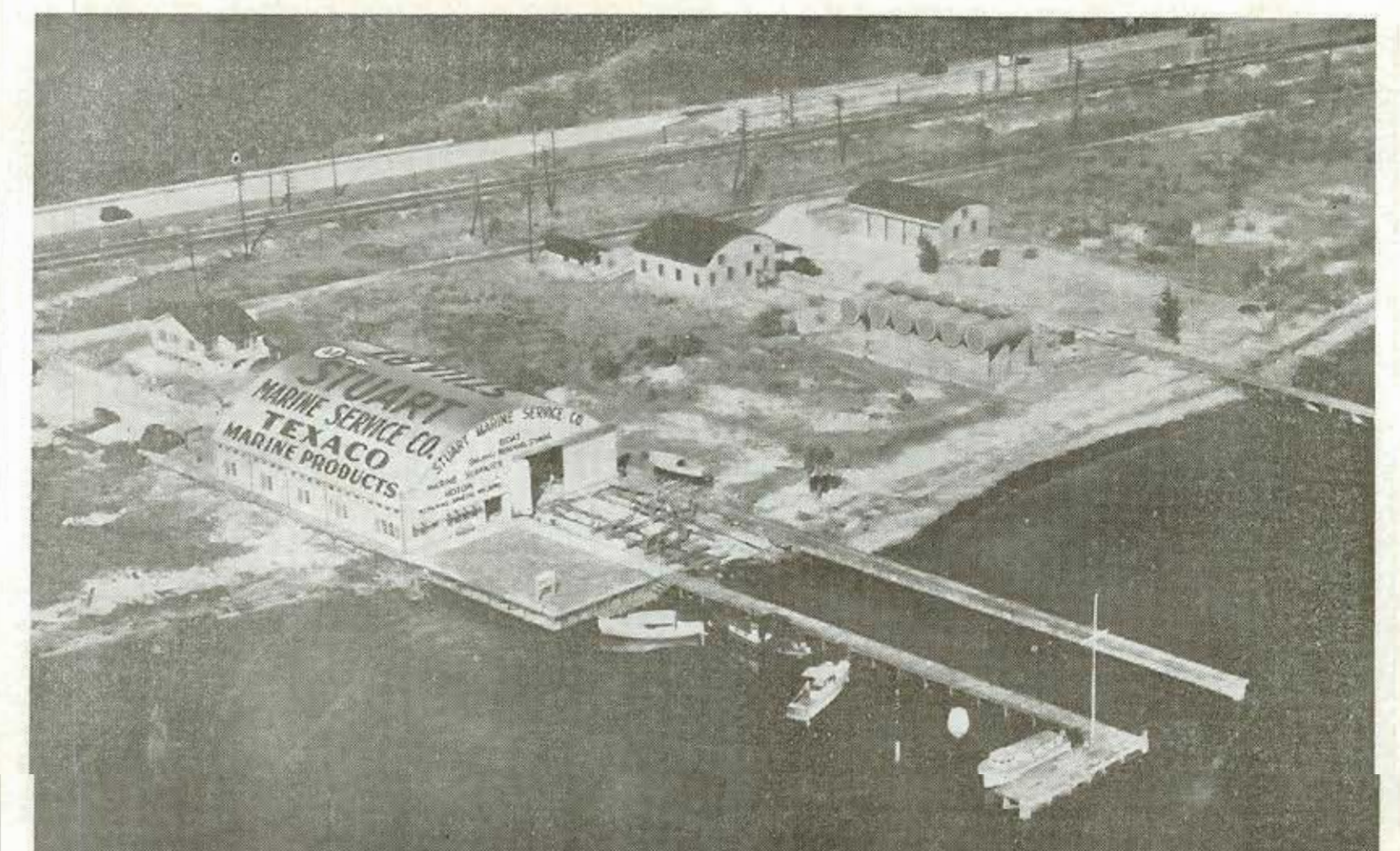
Two Marine Ways
Machine Shop
Modern and Well-equipped.

Fresh Water on Pier.

Storage
All Steel
Hurricane Proof.

Shore Service.
Shower, Rest Rooms
and Transportation.

We Invite
Inspection.



Behind This Giant Levee is Security



For Sixty Miles This Huge Dike, 200 Feet Wide at the Base and 34 Feet Higher Than The Lake Surface, Gives Flood Protection To Booming Everglades Cities. In Time of Threatening Storms, Massive Steel Hurricane Gates Are Shut, Making A Wall Of Defense Against The Waters.



The City Of Pahokee, Debt Free, Owns Its Water Plant, And Is Showing Rapid Business Growth. On the Levee-Rim Route, Pahokee Welcomes Yachting Visitors.

The CITY OF PAHOKEE *Invites the Yachtsman*

Inspect the Agricultural Empire of the
Florida Everglades



Thousands of Carloads of Winter Vegetables Produced Annually



Picture Above Shows Cabbage Production On 'Glades Soil

*Free Fresh
Water
for Yachts*

PAHOKEE

*Free Fresh
Water
for Yachts*

HAS EXCELLENT SCHOOL FACILITIES, CHURCHES
AND A GROWING BUILDING PROGRAM

Take the Safe, Protected Levee-Rim Route!

BELLE GLADE—a Fast-Growing City



The City of Belle Glade Is In the Center of a Prosperous Agricultural and Dairy Country.

The City of CLEWISTON is Attractive



Clewiston Is the Headquarters of the U. S. Engineers, with a personnel of 300 Supervising the Huge Flood Control Project in the Everglades.

U. S. Sugar Corporation, Clewiston Mill



The Largest Sugar Mill In the World Is Operated by the U. S. Sugar Corporation at Clewiston. Visitors are Welcome on Inspection Tours of the Plant During the Cane Grinding Season.

MOOREHAVEN on Lake Okeechobee



At Moorehaven on the West Shore of Okeechobee Yachts Enter the Canal Leading Through Lake Hicpochee to Caloosahatchee

MIAMI, FLA.

ORLANDO, FLA.

CHICAGO, ILL.

R. E. CRUMMER AND COMPANY

INCORPORATED

FISCAL OR ADMINISTRATIVE AGENTS OF REFUNDING PROGRAMS
FOR DESIGNATED FLORIDA TAXING UNITS
FIRST NATIONAL BANK BUILDING

ORLANDO, FLORIDA

SATURDAY

February 20, 1937

COUNTIES

BAY
CITRUS
DE SOTO
HERNANDO
LAKE
MARTIN
MONROE
OSCEOLA
PASCO
PINELLAS
SARASOTA
SEMINOLE
SUMTER
UNION
VOLUSIA

BOARD OF PUBLIC INSTRUCTION

DADE COUNTY
LAKE COUNTY
MONROE COUNTY
PINELLAS COUNTY
VOLUSIA COUNTY

SPECIAL DISTRICTS

ATLANTIC-GULF ROAD
OCEAN SHORE
IMPROVEMENT
ST. LUCIE INLET AND
PORT AUTHORITY

CITIES

BARTOW
NEW SMYRNA
ORMOND
VERO BEACH
WINTER HAVEN

TO THE TAXPAYERS OF MARTIN COUNTY, FLORIDA:

Anticipating that the Supreme Court of Florida will sustain the decree of the Circuit Court in validating the Martin County, Florida, Refunding Bonds recently authorized to be issued by action of the Board of County Commissioners, there has been released to all known holders of Martin County securities a circular letter inviting bondholders to participate in this refunding program.

Preliminary indications justify our making the prediction that these bonds will be ready for exchange during the latter part of the month of March, assuming only that there are no unfavorable developments in the validation suit.

We are exceptionally well pleased with the response accorded this program by the holders of Martin County bonds and we have every reason to believe that in the next two or three months such a portion of the indebtedness of the County will be converted into the new securities that the distressing problems which followed the original debt may be considered a thing of the past by the taxpayers of Martin County. We feel that with the conversion of this debt the taxpayers and the holders of securities supported by taxes in Martin County will again be on a basis of mutual understanding and respect.

We are happy to have the opportunity of making this public statement of the position of the debt problem of Martin County at the time when the County is rejoicing over the completion and dedication of a public improvement which is desired by the residents of the County.

Yours very truly,

R. E. CRUMMER AND COMPANY

By Hewen A. Lasseter.

MIAMI, FLA.

ORLANDO, FLA.

CHICAGO, ILL.

R. E. CRUMMER AND COMPANY

INCORPORATED

FISCAL OR ADMINISTRATIVE AGENTS OF REFUNDING PROGRAMS
FOR DESIGNATED FLORIDA TAXING UNITS
FIRST NATIONAL BANK BUILDING

ORLANDO, FLORIDA

SATURDAY

February 20, 1937

COUNTIES

BAY
CITRUS
DE SOTO
HERNANDO
LAKE
MARTIN
MONROE
OSCEOLA
PASCO
PINELLAS
SARASOTA
SEMINOLE
SUMTER
UNION
VOLUSIA

BOARD OF PUBLIC INSTRUCTION

DADE COUNTY
LAKE COUNTY
MONROE COUNTY
PINELLAS COUNTY
VOLUSIA COUNTY

SPECIAL DISTRICTS

ATLANTIC-GULF ROAD
OCEAN SHORE
IMPROVEMENT
ST. LUCIE INLET AND
PORT AUTHORITY

CITIES

BARTOW
NEW SMYRNA
ORMOND
VERO BEACH
WINTER HAVEN

TO THE TAXPAYERS OF ST. LUCIE INLET DISTRICT AND PORT AUTHORITY:

On the opposite page you will note a letter addressed to the taxpayers of Martin County, Florida. The settlement of the distressing public debt problem of the St. Lucie Inlet District and Port Authority is following that of the County in almost identical stages and we are happy to express the same feeling of confidence regarding the ultimate position of the taxpayers and bondholders of the Inlet District as we expressed regarding the taxpayers and bondholders of Martin County.

We sincerely hope that the solution of these two companion problems will react most favorably on property values within Martin County.

Yours very truly,

R. E. CRUMMER AND COMPANY

By Hewen A. Lasseter.



The Lighthouse

(formerly Speedy's Inn)

On the Federal Highway at the North Approach of
Roosevelt Bridge at Stuart

Invites THE VISITING YACHTSMAN

Chicken and Steak
DINNERS...
Welsh Rarebits
Cocktails
Assorted Liquors, Wines and Beers

Under the Management of A. Tsimas, formerly with
Post Lodge of Larchmont, N. Y.

J. ABBOTT, Owner

Telephone Stuart 9106 For Case Lot
Delivery of Liquors, Wines and Beers



RESORT PROPERTIES

ON OCEAN, RIVER AND BAY AT

JUPITER ISLAND

HOBE SOUND

SEWALL'S POINT

BETWEEN INDIAN AND ST. LUCIE RIVERS

PORT SEWALL

FACING ST. LUCIE INLET

STUART

ON THE ST. LUCIE RIVER

LET ME SHOW YOU MY LISTINGS OF
DESIRABLE IMPROVED AND
VACANT PROPERTY IN
MARTIN COUNTY

FRANK DORRIS

P. O. BOX 202

STUART HOTEL

STUART



THE ARUNDEL SHOPS ON ST. LUCIE CANAL

The Arundel Corporation

MAIN OFFICE

BALTIMORE, MARYLAND

DREDGING

Sand, Gravel, Slag

GEN. CONTRACTING

IN FLORIDA 25 YEARS

MIAMI, FLA.

NEW YORK

STUART, FLA.

Entering the West Coast Link



Locks Near Moorehaven in the Foreground, with West Shore Shallows of Lake Okeechobee and Dredged Channel Extending
Toward the East. Dredged Channel Immediately East of Locks Leads Around Lake Rim.



This Picture Shows One of the Many Horseshoe Bends in the Caloosahatchee River Which Have Been Eliminated by the Fed-
eral Government in the \$1,500,000 Deepening and Straightening Operation On The Moorehaven-Fort Myers Link.

Welcoming the Yachtsman

Fountain Service
Prescriptions
Kodaks and
Camera Supplies
Candies
Cosmetics

**STUART
DRUG CO.**

Stuart, Fla.

ST. LUCIE HOTEL

On the shore of the St. Lucie River at Stuart, invites the patronage of visiting yachtsmen.

Ample pier facilities.
Delightful meals.
Comfortable rooms.

Under the management
of Mr. and Mrs. Luther
Dameron.

WRITE FOR RATES
and RESERVATIONS

STUART HOTEL

ON THE BEAUTIFUL
ST. LUCIE RIVER
STUART, FLORIDA

A hospitable, home-like
establishment inviting
your patronage.

REASONABLE
RATES

We join in welcoming
the yachtsmen and vis-
itors present at the

CROSS-STATE
WATERWAY
OPENING

for Economical Transportation



"The Complete Car—
Completely New"

Royal Palm
Chevrolet Co.
STUART, FLA.

Navigation Data



DISTANCES ALONG THE CROSS FLORIDA WATERWAY

St. Lucie River Intersection with Flor- ida East Coast Waterway Beacon	Nautical Miles	Statute Miles
46, Note A		
Stuart, Town Dock	6.9	7.9
St. Lucie Canal, First Lock	5.6	6.5
Port Mayaca—Lake Okeechobee	22.6	26.0
Moorehaven via Rim of Lake	43.5	50.0
La Belle, Caloosahatchee River	23.4	27.0
Beautiful Isle, Caloosahatchee River	27.8	32.0
Fort Myers, City Dock	4.8	5.5
TOTAL	134.6	154.9
Note A: From Jacksonville	231.3	266.0
From Palm Beach	29.7	34.2

Information on Locks



	Controlling Length of Lock	Controlling Width of Lock	Depth Over Sill
Moorehaven Lock	250'	50'	10.0'
Lock No. 2—Ortona	250'	50'	10.0'
St. Lucie Lock No. 1	150'	50'	8.0'
St. Lucie Lock No. 2	150'	30'	8.0'

St. Lucie Locks Nos. 1 and 2 are provided with by-passes having a width of 50' and length of 250'



The air view above shows craft docked at Stuart Marine Service plant, Florida's finest boat yard, located at Stuart on the St. Lucie river, first port of call after leaving the Intracoastal Waterway for the Cross-State trip. The St. Lucie river estuary, more than a mile wide below the city, provides an excellent regatta ground where sailboat and speedboat races are frequently held.

MARINE SUPPLIES

INTERNATIONAL
COPPER PAINT

Deck Paint
Marine Hardware

FISHING TACKLE

for Deep Sea, Inlet and
Lake Fishing

RICOU
Hardware Co.

Stuart, Florida

STOP and FISH

AT JENSEN

Famous Indian River
Fishing Grounds

BAIT and TACKLE
(Live Shrimp)

BEERS and WINES

Located at the Mile-
Long Fishing Bridge

Fogarty's
TACKLE SHOP
Jensen Florida

Standard Gasoline

And

ESSOLUBE MOTOR
OILS

for fine performance
LAND OR SEA
Welcome, Yachtsmen

**STANDARD
OIL CO.**

WILSON McCLURE,
Agent

See Martin County's

Beauty Spots

Jupiter Island
Sewall's Point
Ocean Beach

by
T A X I

**ST. LUCIE
AUTO CAMP**

PHONE 74
For Taxi Service

STUART ON THE ST. LUCIE

and
Martin
County



SAILFISH LANDED NEAR STUART



COCOANUTS GROWING AT STUART

GEORGE J. BACKUS
Realty Company
Insurance
Listings Throughout Martin
County.
Phone 103 Stuart

A. T. HOGARTH

Real Estate and Insurance

Postoffice Arcade Stuart

BARNES DRUG STORE

Drugs, Candies, Sodas
Students' Headquarters

Postoffice Arcade Stuart

STUART PAINT CO.

Marine Paints and Supplies
Fishing Tackle

Postoffice Arcade Stuart

WILLIAM H. ROAT

City and County Surveyor
Blue Prints, Black and
White Prints
And My Footprints Over
Martin County

**HAYES-LEONARD MOTOR
COMPANY**

Dodge and Plymouth Cars
Autos on "Buy Back" Rental
Plan
Browning Building Stuart

McCLUNG'S

5c to \$1 Store

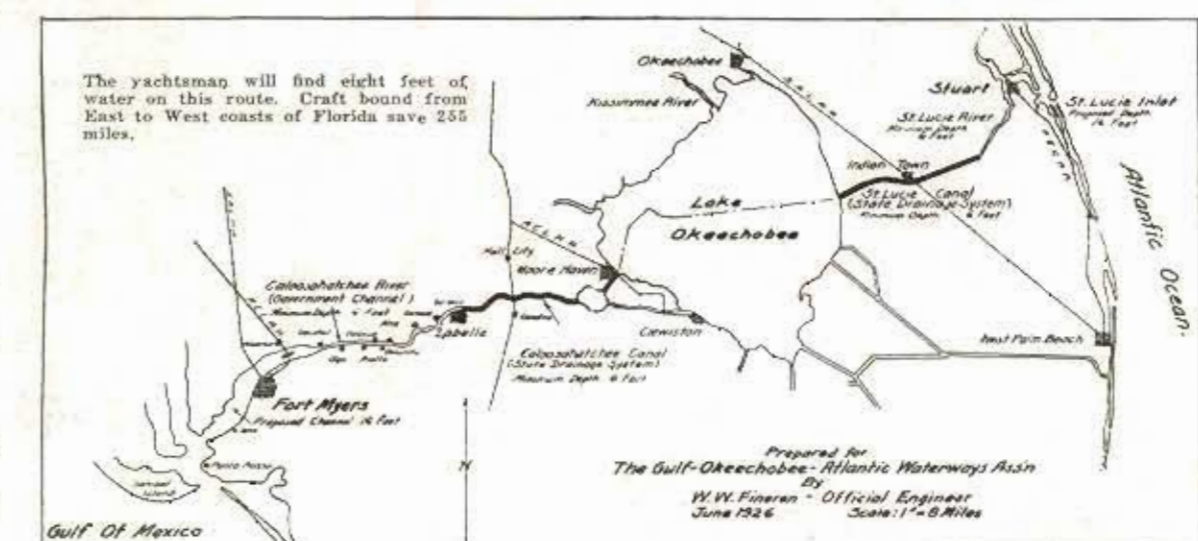
Osceola Ave. Stuart

Invite the Nation's Yachtsmen

Atlantic Gateway to the
Gulf of Mexico and the
Florida Everglades

Visit Stuart and Martin County on your way
across the state to the Gulf Coast. Or if you are
making the West-to-East run, plan to spend several
weeks in the delightful vacation playground of this
East Coast community.

NORTH FLORIDA HAS THE PUBLICITY



SOUTH FLORIDA HAS the WATERWAY

No dream, but already a reality, is South Florida's cross-state canal from Stuart to Fort Myers, effecting a saving of 255 miles to the yachtsman. It is estimated that, for just \$30,000,000 more, the federal government could build a ship canal on the present route, whereas \$300,000,000 would be needed to dig the contemplated North State route. There is now 8 feet of water from Stuart to Fort Myers, and there will be 10 feet in the near future.

**MEGGETT HARDWARE
and Paint Company**
Marine Supplies
Fishing Tackle
Osceola Ave. Stuart

WILEY'S GARAGE
Martin County's
Completely Equipped
Garage Service
N. Federal Highway
Phone 9118 Stuart

**EAST COAST LUMBER
& SUPPLY CO.**
"Everything You Need In
Lumber."
Stuart, Florida

WOODS LUMBER CO.
"When You Think of Lum-
ber, Think of Woods."
Hobe Sound, Fla.

The MAJESTIC APARTMENTS

STUART, FLORIDA

NEAR THE WORLD-FAMOUS ST. LUCIE RIVER FISHING GROUNDS. CONVENIENTLY LOCATED IN DOWNTOWN STUART. ELECTRIC REFRIGERATORS AND RANGES AT OPTION. COMFORTABLE INNER SPRING MATTRESSES. THE IDEAL PLACE TO SPEND YOUR WINTER VACATION.

Write **M. P. PAYETTE**

STUART, FLORIDA
FOR RATES AND INFORMATION
Consult
ANY RECOGNIZED BROKER

This Edition

AERIAL PHOTOGRAPHS by Lowell Hill

of the

FLORIDA PHOTOGRAPHIC CONCERN

Fort Pierce, Fla.

Flying with Clate Weaver of Fort Pierce

COVER DRAWING by Bean Backus, Fort Pierce

The Stuart Daily News acknowledges with thanks the co-operation of the Okeechobee Flood Control Board and the U. S. Engineer's Department.

WE WELCOME THE YACHTSMEN

based at Stuart enroute to the Gulf Coast on the new Cross-State waterway. Consult us about electrical repairs or repairs to your radio equipment.

RCA VICTOR RADIOS and TUBES

Hall's Electric Service

Stuart Post Office Arcade Phone 13

CONGRATULATIONS

On the Opening
of the

CROSS-STATE
WATERWAY

From
Stuart to Ft. Myers

Pitchford

CAMP

Jensen, Fla.
One of Florida's Finest
Trailer Camps

RESTOCK at STUART
with

**Quality
Groceries**

AND MEATS

Special attention to
orders from visiting
yachts.

**SUNRISE
GROCERY**

Stuart, Fla.

MARTIN COUNTY OFFICIALS

TAKE THIS OPPORTUNITY TO WELCOME
THE YACHTSMEN VISITING STUART FOR
THE CROSS-STATE WATERWAY CELEBRATION.

J. R. POMEROY

Clerk of Circuit Court

L. C. KICKLITER

County Tax Collector

C. E. CHRISTENSEN

Sheriff

A. C. COURSON

Tax Assessor

J. A. JAMISON

Superintendent of Public Instruction

FORT MYERS GREET'S YOU!

Located on the famous Tamiami Trail and on the south side of the Caloosahatchee river. Fort Myers is a modern city of more than 10,000 population with tourist accommodations for an additional 5,000 persons. One hundred varieties of palms thrive here giving Fort Myers undisputed claim to being the most tropical city in North America.

Fort Myers, accustomed to entertaining visitors, is known as a friendly city. The schools, churches and clubs are open to our visitors and they soon find themselves thinking of Fort Myers as "home." For this reason a large colony of regular visitors are really "winter residents"—spending from three to six months of the year in their homes here. Because of a wealth of fresh fruits and vegetables, and a mild year round climate following a maximum of outdoor life, living costs are more reasonable than in any more northerly city.

Fort Myers was really discovered by Thomas A. Edison on his first visit here in 1884. Since that time the city has grown as more people of judgment "discovered" the charms of the "City of Palms" and the tropical Lee County. Of course all forms of recreation are available. Fine churches are open to the visitors. No tuition is charged for attendance in a fully accredited system of public schools. The city operates a municipal soft water plant. All other modern utilities are available. You are invited to see and enjoy these and other attractions of this community.



Headquarters for Fishing Tackle and Boat Fittings



Franklin Hardware Co.

W. P. FRANKLIN, Prop.

FORT MYERS

SALES

RENTALS

WE COVER



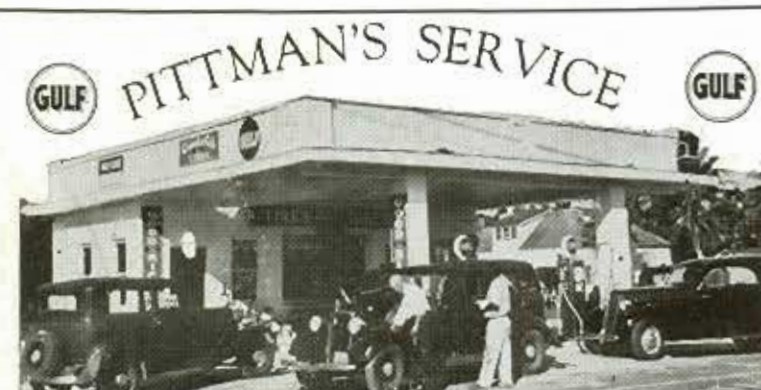
SOUTH FLORIDA

For complete information regarding Southwest Florida—Lee County and its interesting coastal section, dotted with many tropical islands — Fort Myers home sites on the tropical banks of the Caloosahatchee River, homes, riverfront estates, choice small tracts, farms, citrus groves, accessible large tracts suitable for colonization, combination propositions, business opportunities and complete rental service, write —

K. L. Jeffcott Realty Co.
REALTORS

Member Lee County Chamber of Commerce, Local, State and National Association of Real Estate Boards.

Reference:
FIRST NATIONAL BANK, FORT MYERS, FLA.



WELCOME, VISITORS!

FRESH WATER AND DOCK SPACE FOR VISITING
BOATS
BATTERIES TIRES ACCESSORIES

USE THAT GOOD GULF

GASOLINE and OIL

GOODRICH Tires and Tubes

GEORGE W. PARKS
DISTRIBUTOR

STUART SERVICE STATION

Invites the Patronage of the Visiting Motorist.
Friendly Service. Expert Lubrication

TIRES AND ACCESSORIES



An INVITATION from
The City of FORT MYERS
 "The City of Palms"



MAGNIFICENT TROPICAL SURROUNDINGS - - - - - RICH, FERTILE LANDS



UNEXCELLED RECREATIONAL FACILITIES - - - - - WORLD'S FINEST FISHING



Make Your Winter or Permanent Home in Fort Myers

Address City of Fort Myers, Florida - - - - - Dave Shapard, Mayor

Roaming Gulf Coast Waters

Fleet launches, sleek yachts and cozy houseboats glide smoothly between palm lined shores of the South Florida Cross-State Yacht Canal between Fort Myers on the Gulf Coast and Stuart on the Atlantic Coast. This fascinating 150 mile inland cruise through a hitherto unadvertised, almost unknown tropical wilderness, is one of the many waterway cruises that challenge the adventuring sea lover. Pelican Island; the "grouper banks;" Pirates' Keys; the Ten Thousand Islands! Here are blue skies . . . sun . . . salt tanged air . . . rose tinted sails in the dawning . . . wild birds . . . palm trees . . . mangroves . . . the lazy charm of the South Seas!

Six hundred varieties of fish abound in Lee County's salt water passes, bays, sounds, numerous fresh water rivers, lakes, creeks and the open Gulf. Here real fishing joy begins! Cast your plug, drop your bait—"Plop!" goes the cork. "Zing-g-g!" goes the reel, and the battle is on. There are fighting tarpon—the "silver king"—channel bass, kingfish, red snapper—There are savage barracuda, powerful bonita, darting, many colored dolphin, deep diving grouper. Game fish! Fighting fish!—To try your skill and reward your patience—to leave you with unforgettable memories that will ever lure you back.

**Waterfront Service at Ft. Myers
 For All Boats**

(Gas or Diesel)
 GAS — LUBRICANTS — FRESH WATER
 ANCHORAGE FACILITIES — TELEPHONE



Gulf Oil Corporation

D. W. IRELAND
 Fort Myers, Florida

**Opportunities
 AWAIT YOU!**



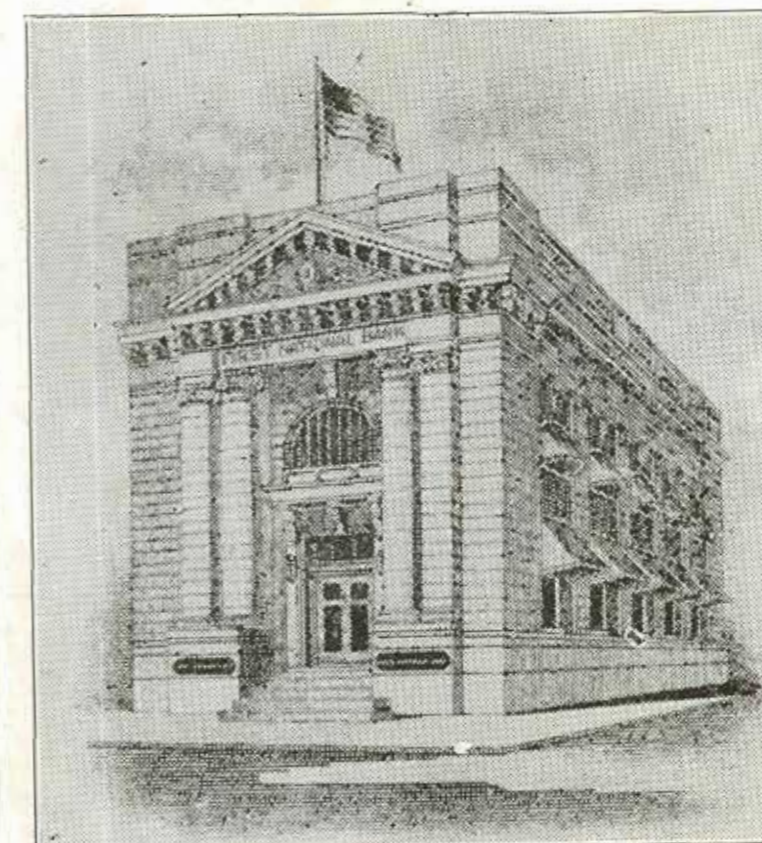
Above: Proud Royal Palms border the First street business section in Fort Myers. New Federal building on the right.

Address all inquiries to

**LEE COUNTY
 CHAMBER OF COMMERCE**

AL WILLIAMS, SECRETARY
 FORT MYERS, FLORIDA

**A WELCOME
 Awaits You Here!**



**THE
 FIRST NATIONAL
 BANK
 IN FORT MYERS**

**LEE
 COUNTY
 BANK**

"The Bank of Friendly Service"

Hendry and Main Streets
 FORT MYERS, FLORIDA

Roaming Gulf Coast Waters

Fleet launches, sleek yachts and cozy houseboats glide smoothly between palm lined shores of the South Florida Cross-State Yacht Canal between Fort Myers on the Gulf Coast and Stuart on the Atlantic Coast. This fascinating 150 mile inland cruise through a hitherto unadvertised, almost unknown tropical wilderness, is one of the many waterway cruises that challenge the adventuring sea lover. Pelican Island; the "grouper banks;" Pirates' Keys; the Ten Thousand Islands! Here are blue skies . . . sun . . . salt tanged air . . . rose tinted sails in the dawning . . . wild birds . . . palm trees . . . mangroves . . . the lazy charm of the South Seas!

Six hundred varieties of fish abound in Lee County's salt water passes, bays, sounds, numerous fresh water rivers, lakes, creeks and the open Gulf. Here real fishing joy begins! Cast your plug, drop your bait—"Pop!" goes the cork. "Zing-g-g!" goes the reel, and the battle is on. There are fighting tarpon—the "silver king"—channel bass, kingfish, red snapper—There are savage barracuda, powerful bonita, darting, many colored dolphin, deep diving grouper. Game fish! Fighting fish!—To try your skill and reward your patience—to leave you with unforgettable memories that will ever lure you back.

Waterfront Service at Ft. Myers For All Boats

(Gas or Diesel)

GAS — LUBRICANTS — FRESH WATER
ANCHORAGE FACILITIES — TELEPHONE



Gulf Oil Corporation

D. W. IRELAND
Fort Myers, Florida

Opportunities AWAIT YOU!



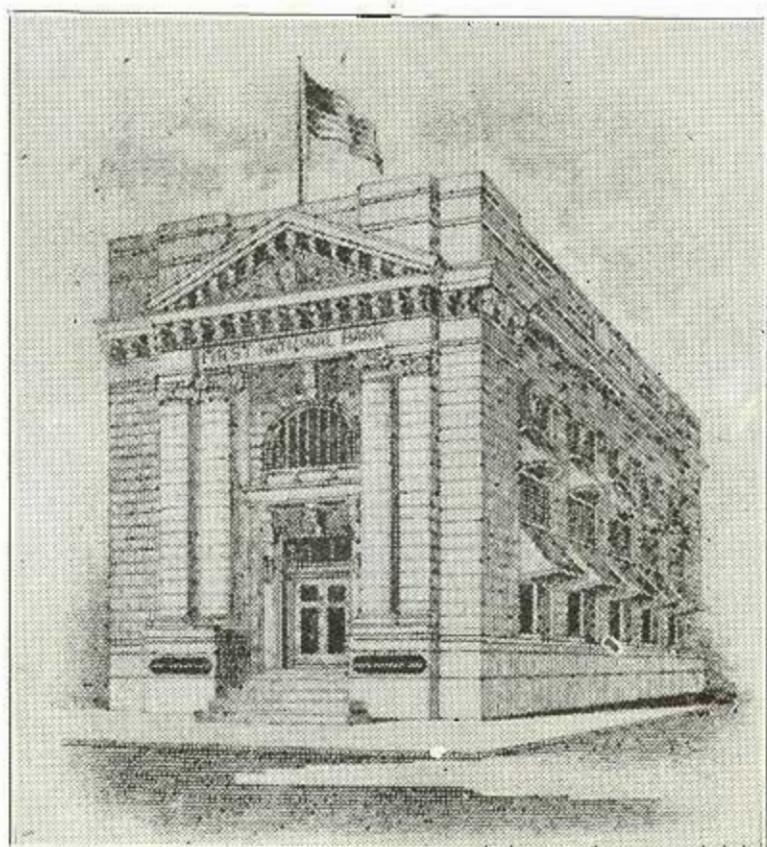
Above: Proud Royal Palms border the First street business section in Fort Myers. New Federal building on the right.

Address all inquiries to

LEE COUNTY
CHAMBER OF COMMERCE

AL WILLIAMS, SECRETARY
FORT MYERS, FLORIDA

A WELCOME *Awaits You Here!*



THE
FIRST NATIONAL
BANK
IN FORT MYERS

LEE COUNTY BANK

"The Bank of Friendly Service"



Hendry and Main Streets
FORT MYERS, FLORIDA

(Continued from First Page)

ried forward to today. Tomorrow's projects will include the St. Lucie inlet (at Stuart) and Fort Myers harbor improvement on far-reaching scales. This great cross-State waterway that is a reality, not a dream or a blueprint, crosses the East Coast canal at the St. Lucie inlet, and this cross-roads is destined to be a focal point in future development on Florida's East Coast.

A thousand men have had a part in the promotion of the canal project between Stuart and Fort Myers, over a period of many years. Thousands will cheer next month as this waterway is opened to craft of all kinds drawing up to 6 feet, with a two-day celebration that will carry a watercade from Stuart to Clewiston and then on to Fort Myers.

Yet standing out, head and shoulders above all the others who have given part of their lives to the realization of this waterway dream, stand two great figures in the daily life of South Florida. The Stuart Daily News pays tribute of admiration and respect to these two pioneers—

Commodore Stanley Kitching of Stuart.

Honorable W. P. Franklin of Fort Myers.

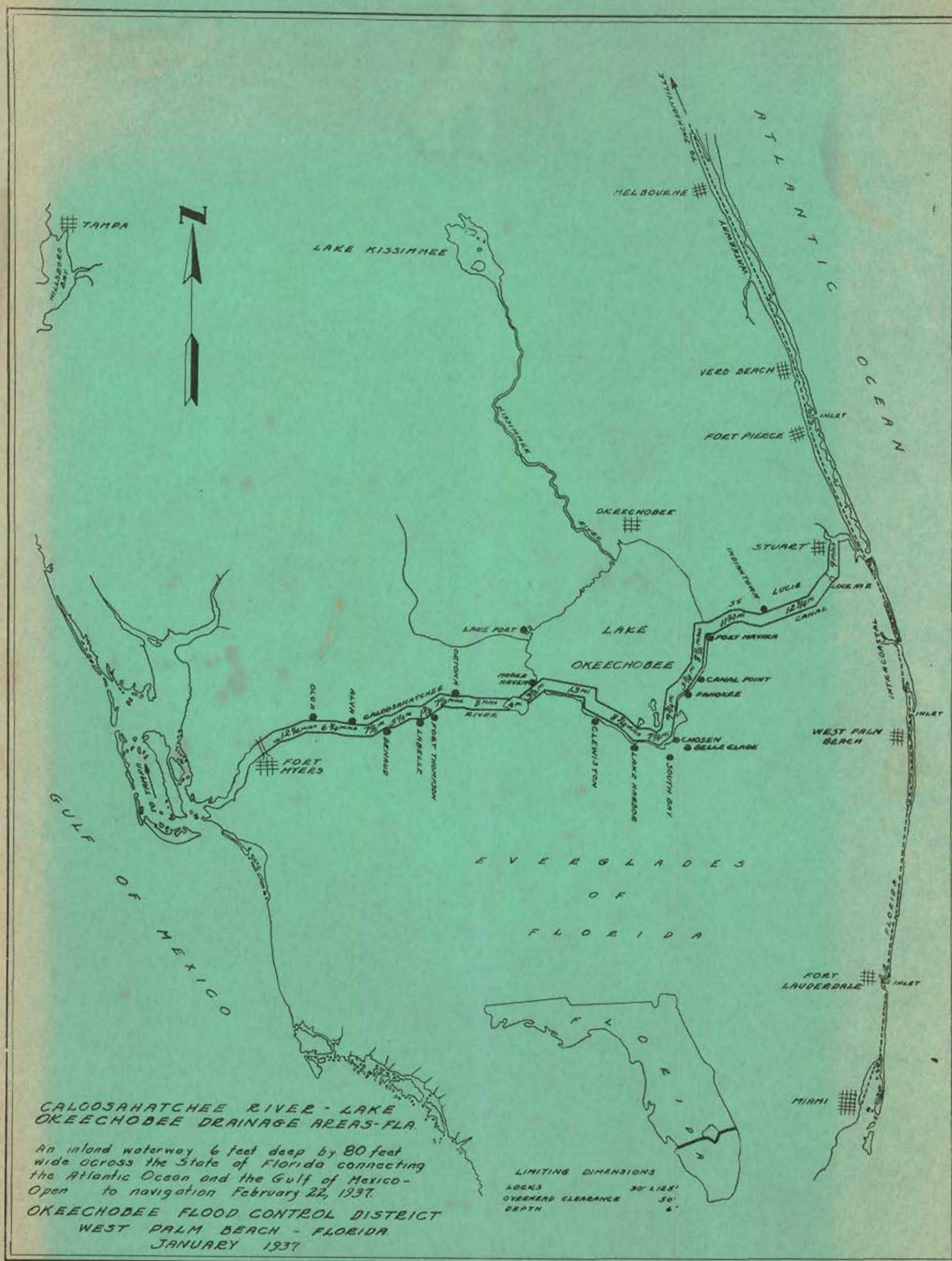
Those two men symbolize the cross-Florida canal achievement, and today's special issue of this newspaper is dedicated to them, in recognition of loyal and untiring service to the terminal cities that they call home. Hats off to both of you!

Today's issue of the Stuart Daily News presents a panorama of this magnificent waterway, following a geographical sequence from the Atlantic to the Gulf. An airplane photographer has captured for you a series of pictures that starts at Stuart, carries you 150 miles through the Everglades communities, and on to Fort Myers. Such a graphic portrayal of the canal permits the reader to understand what this waterway is, what it means, what it does. Copies of this book go to every member of Congress, to yachtsmen everywhere who are interested in this aid to navigation, and to others who see in this canal another great forward step for Florida. And if this book carries to these readers a message of progress, it has served its purpose.

I am particularly indebted to my faithful assistant, Ernest Lyons, and to an understanding photographer, Lowell Hill, for the effectiveness of this edition.



This Map Shows the Levee-Rim Route



Yachts Visiting Hobe Sound

Or Passing Through Enroute to the New Cross-State Waterway can secure prompt delivery of

ICE and DAIRY PRODUCTS

From

OLYMPIA ICE COMPANY

Telephone Hobe Sound 2581

TEXACO

FIRE CHIEF GASOLINE

is available for yachts at Stuart Marine Service pier in Stuart.

JACK COLEMAN
Agent

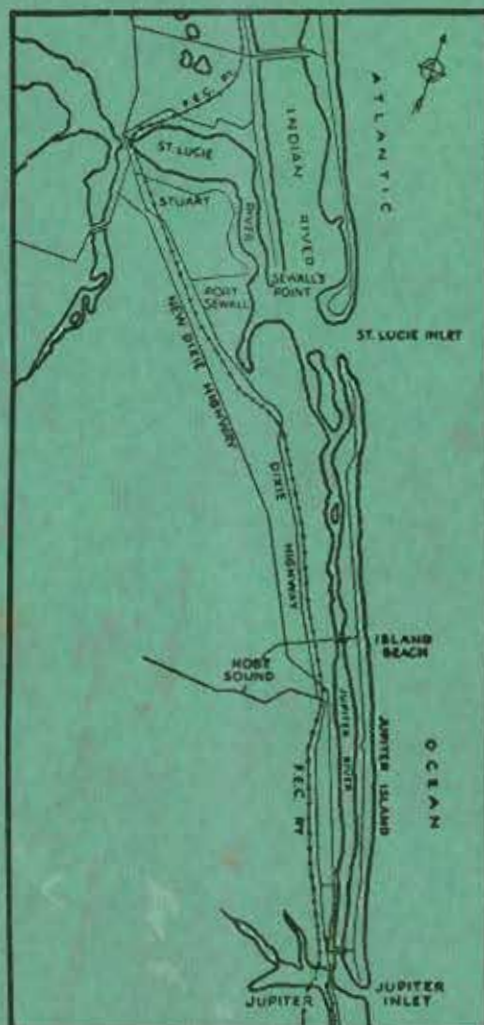


Waterfront Property

IN A YACHTING WONDERLAND

— Atlantic Gateway to the Gulf of Mexico —

On Hobe Sound, Indian and St. Lucie Rivers and Ocean Front



Along the Gulf Stream

Real Estate

Sales
Leases
Rentals
Escrows
Winter Estates
Tax Adjustments
Property Management

Insurance

Life
Fire
Storm
Marine
Liability
Accident
Burglary
Automobile

OFFERING

Distinctive and Restricted Properties

Winter Homes and Homesites

Improved and Unimproved Waterfrontage

Income Properties... Acreage—at

PORT SEWALL SEWALL'S POINT
STUART SALERNO
JUPITER ISLAND HOBE SOUND
PORT MAYACA



C. B. ARBOGAST

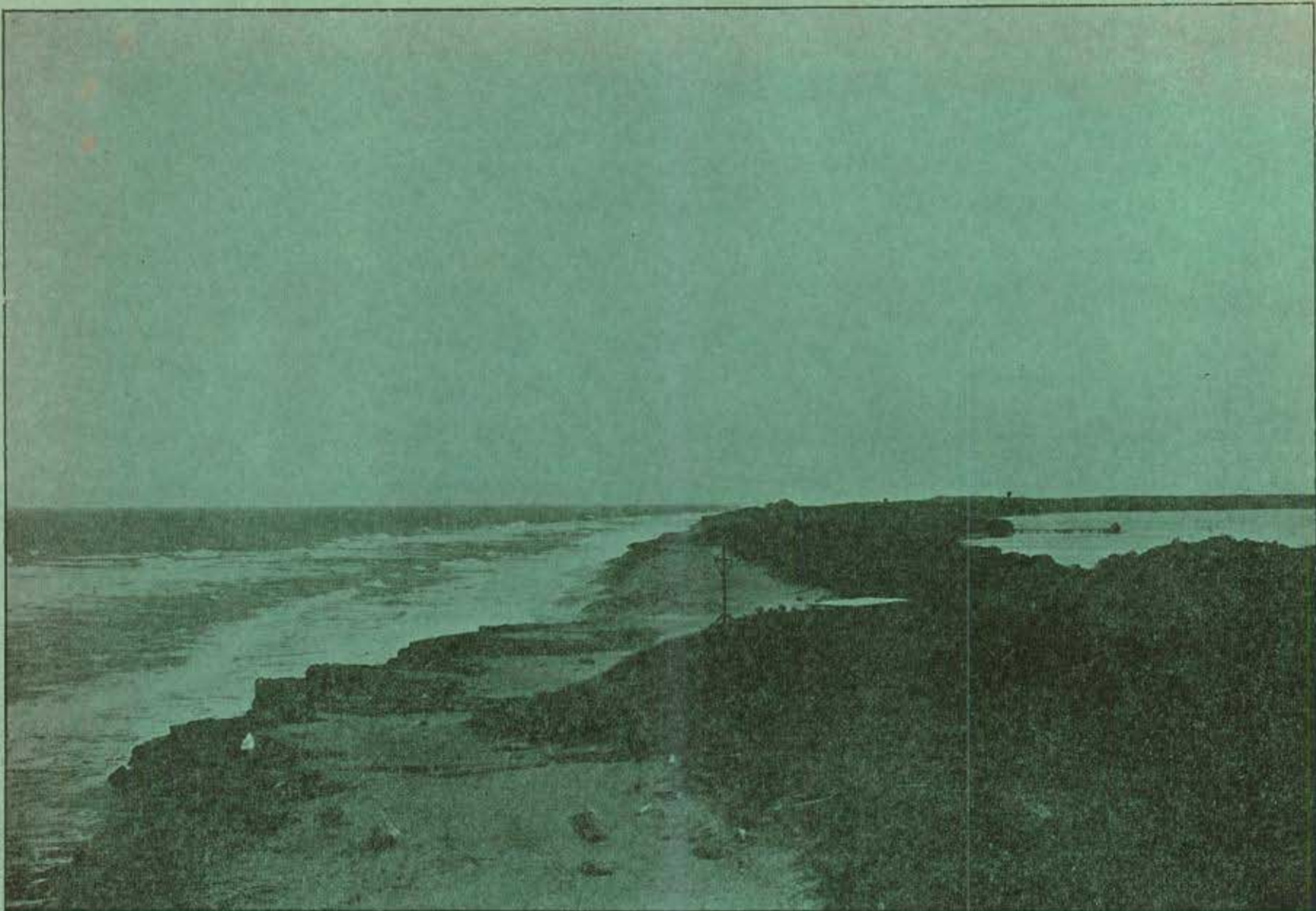
Real Estate

WATERFRONT PROPERTY

Insurance

301-303 St. Lucie Avenue

Stuart, Florida



NOW OFFERING 5 MILES OF OCEAN-TO-RIVER PROPERTY ADJACENT TO ST. LUCIE INLET.
MORE THAN 30 YEARS EXPERIENCE IN ACTUAL DEVELOPMENT AND SALES OF WATERFRONT
ESTATES.

ERICH SCHROEDER, Realtor

E. B. DAVIS, Associate

Phone 4410

LICENSED REAL ESTATE BROKERS AND PURCHASING AGENTS

Offices: 206-207 Harvey Building

West Palm Beach, Fla.

Reference: Central Farmers' Trust Company, West Palm Beach

An Expression of CONFIDENCE

WE believe in the future of the Everglades.

Substantiating this belief, we have invested more than \$20,000 in equipment at Belle Glade. The new Cross-State Waterway is another milestone of progress for the Everglades section, opening it to the yachtsmen of the nation.

*We wish to extend a sincere welcome to the boating visitors
who will inspect the Everglades on this new route.*

WE HAVE PREPARED OURSELVES TO SERVE YOUR EVERY NEED IN PASTEURIZED MILK,
PENNOCK'S CERTIFIED MILK, HOMOGENIZED VITAMIN "D" MILK, BUTTERMILK, CHOCOLATE
MILK, COTTAGE CHEESE, ICE CREAMS AND SHERBETS IN MANY FLAVORS AND COMBINA-
TIONS OF FLAVORS.

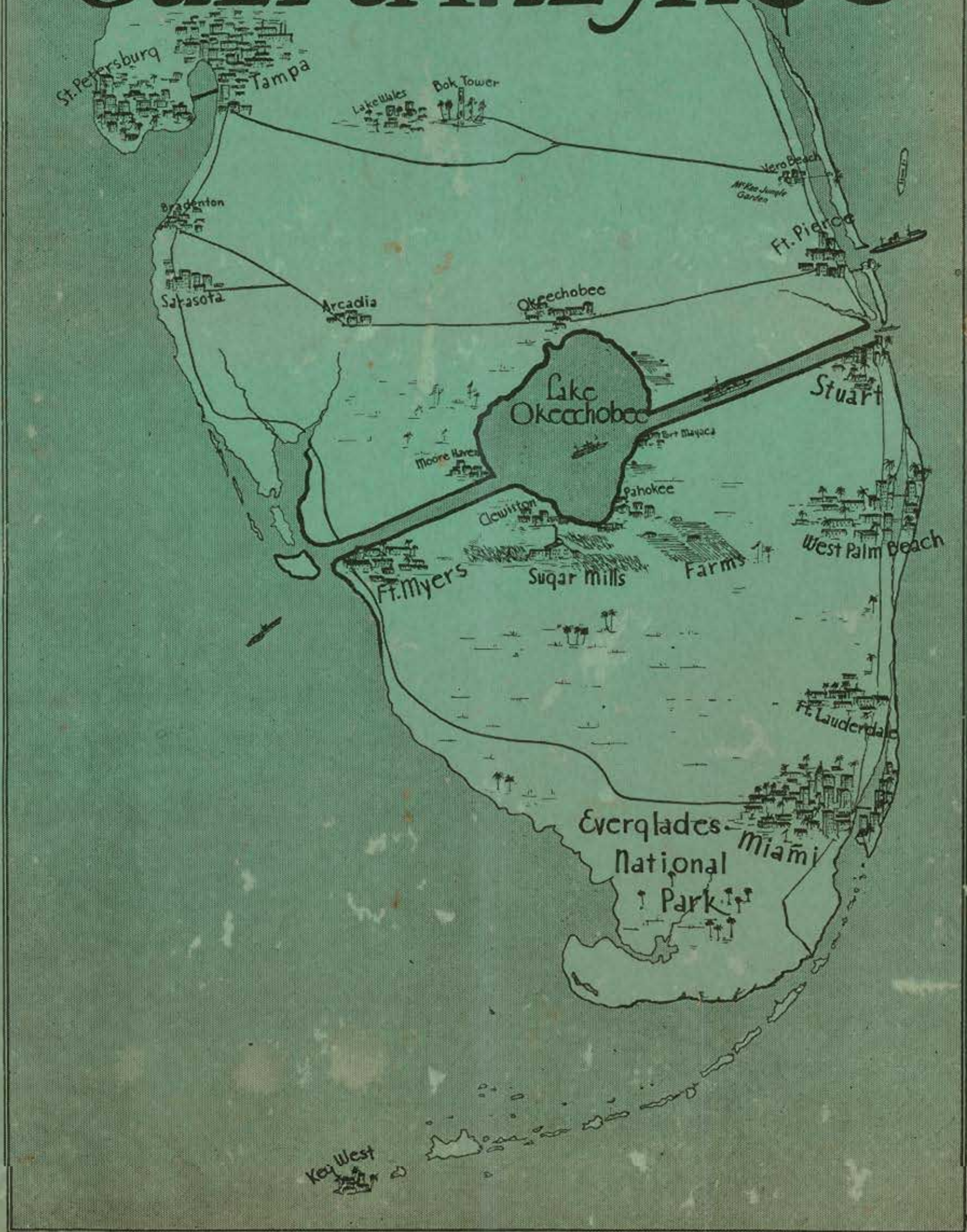
ALFAR
CREAMERY CO.

BELLE GLADE

PHONE 20

*Please return to
W.D. Silverman*

From THE ATLANTIC to the GULF of MEXICO



An INVITATION from
The City of FORT MYERS
"The City of Palms"



MAGNIFICENT TROPICAL SURROUNDINGS

RICH, FERTILE LANDS



UNEXCELLED RECREATIONAL FACILITIES

WORLD'S FINEST FISHING



Make Your Winter or Permanent Home in Fort Myers

Address City of Fort Myers, Florida

Dave Shapard, Mayor