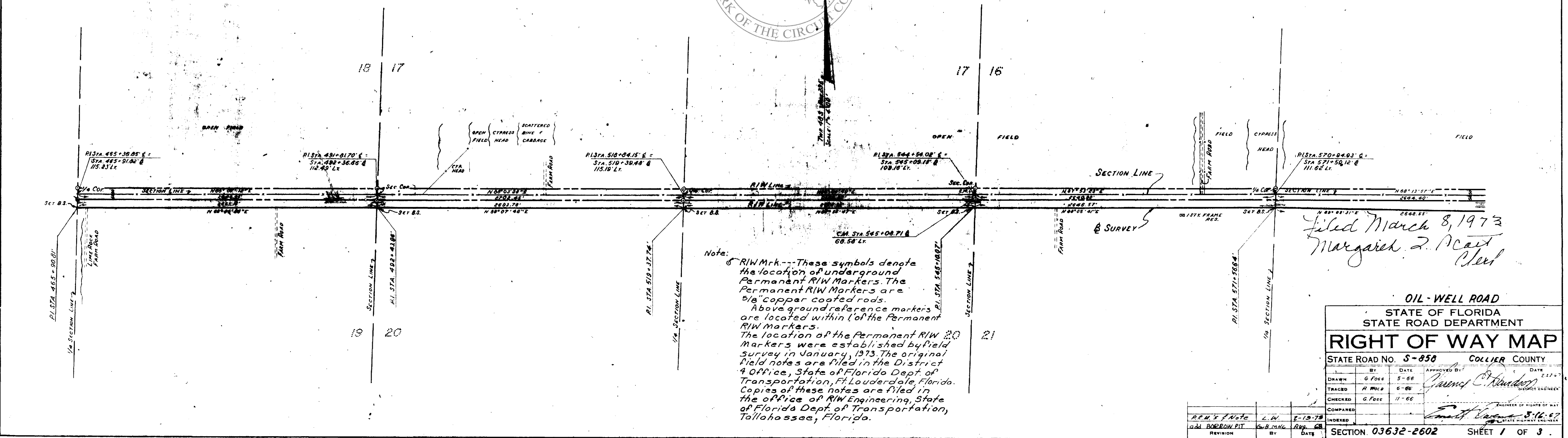
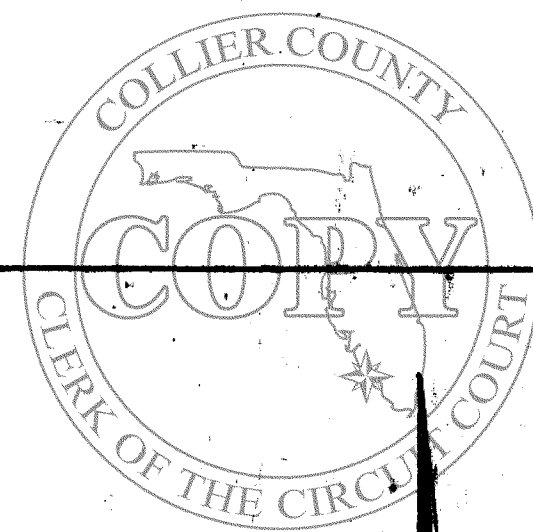
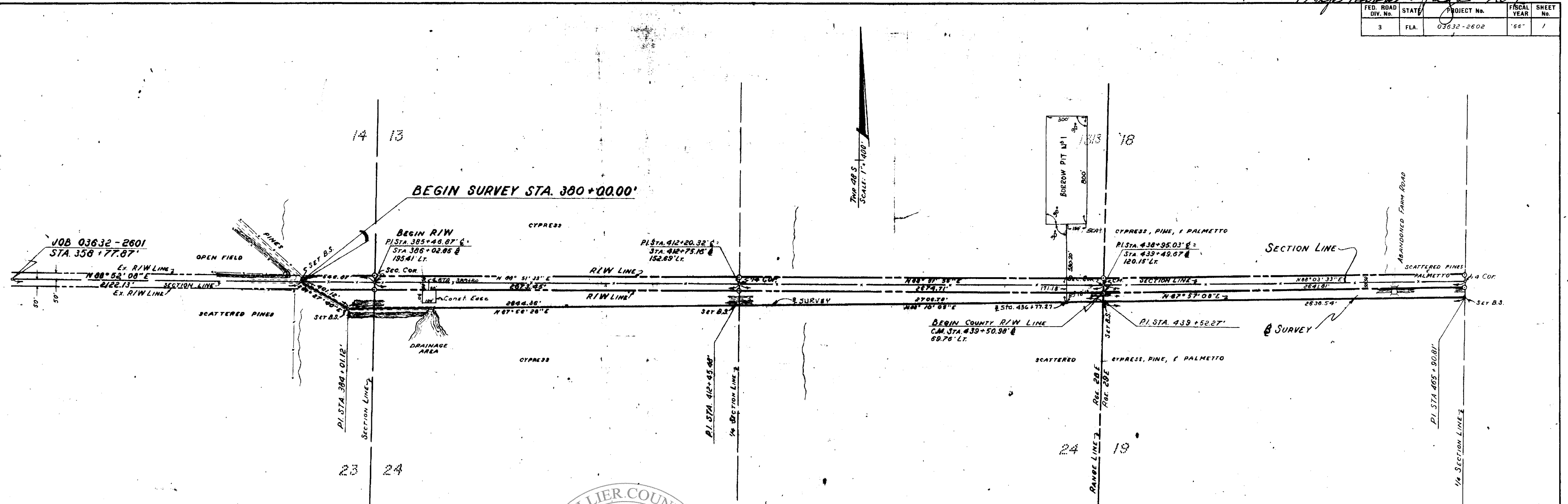
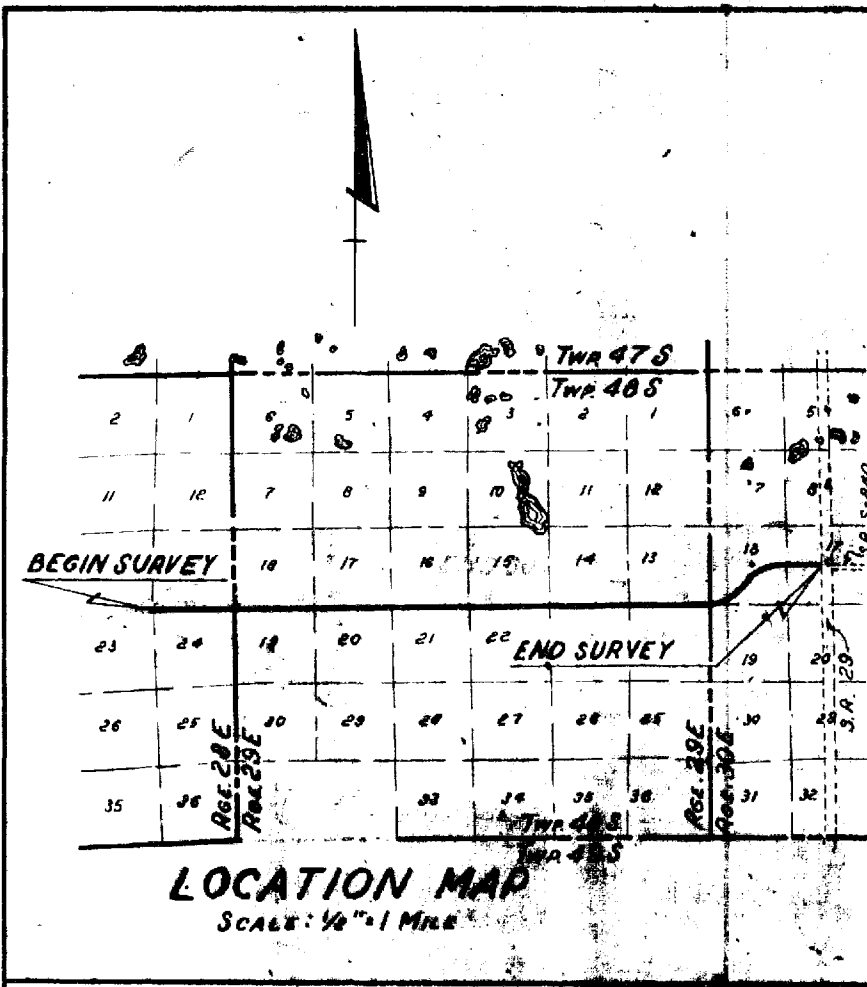


FED. ROAD DIV. No.	STATE	PROJECT No.	FISCAL YEAR	SHEET No.
3	FLA.	03632-2602	'66'	1



Note:
 6 R/W Mkr. --- These symbols denote the location of underground Permanent R/W Markers. The Permanent R/W Markers are 5/8" copper coated rods. Above ground reference markers are located within 1' of the Permanent R/W Markers. The location of the Permanent R/W 20 Markers were established by field survey in January, 1973. The original field notes are filed in the District 4 Office, State of Florida Dept. of Transportation, Ft. Lauderdale, Florida. Copies of these notes are filed in the office of R/W Engineering, State of Florida's Dept. of Transportation, Tallahassee, Florida.

Filed March 8, 1973
 Margaret Z. Acatt
 Clerk

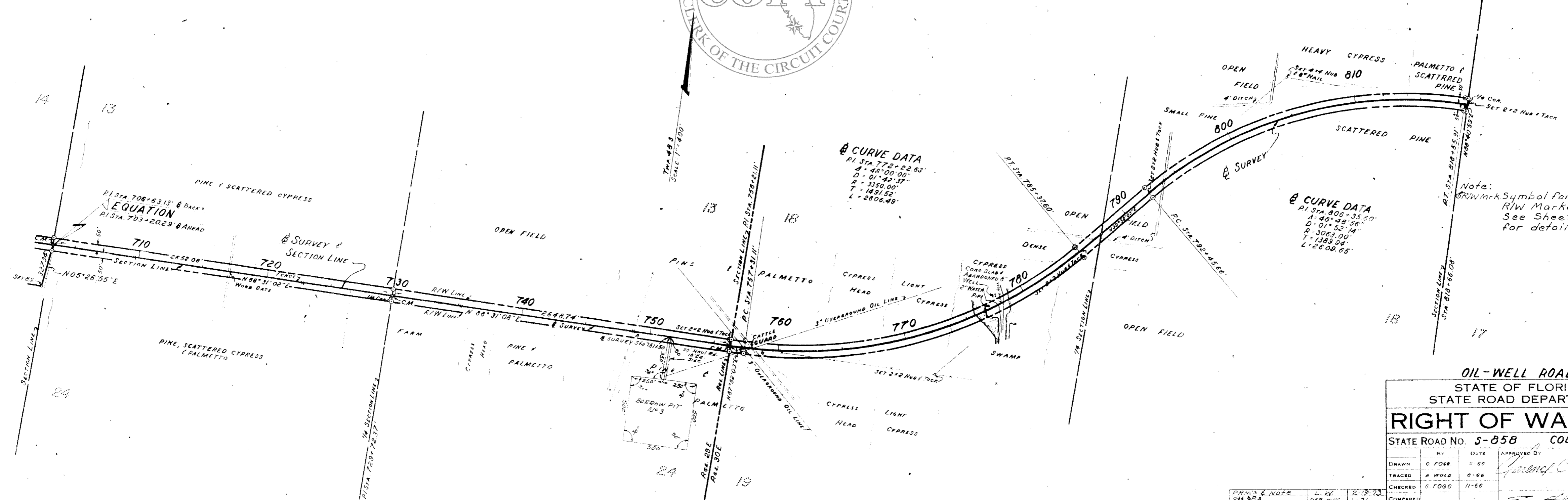
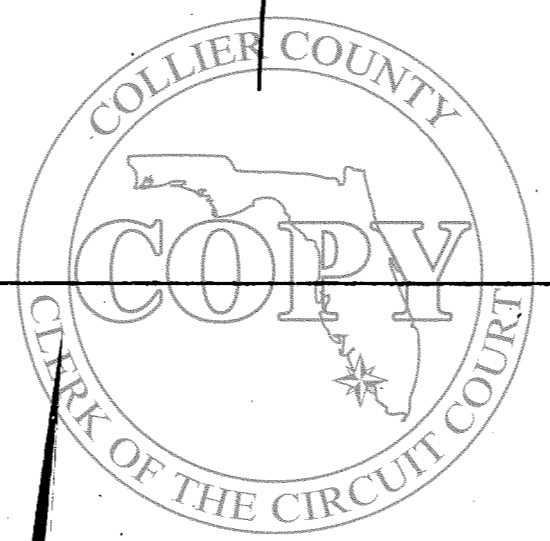
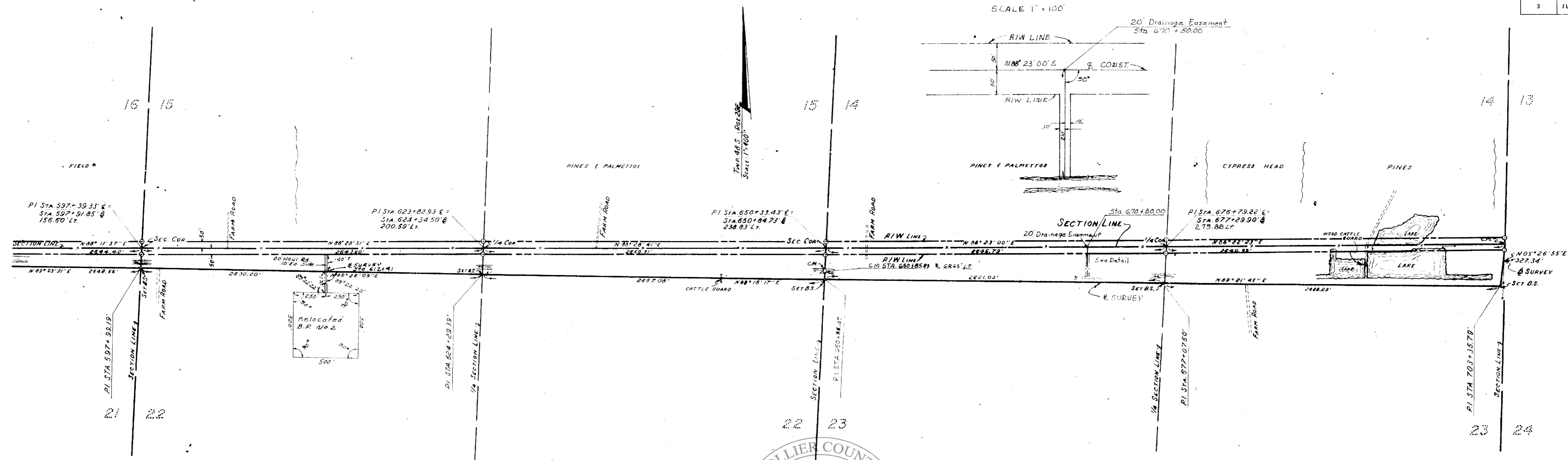
OIL - WELL ROAD
 STATE OF FLORIDA
 STATE ROAD DEPARTMENT
RIGHT OF WAY MAP
 STATE ROAD NO. 5-858 COLLIER COUNTY

BY	DATE	APPROVED BY	DATE
DRAWN G. Foss	5-66	<i>James C. Sanders</i>	5-66
TRACED R. M. B.	6-66		
CHECKED G. Foss	11-66		
COMPARED			
INDEXED			

SECTION 03632-2602 SHEET 1 OF 3

FED. ROAD DIV. No.	STATE	PROJECT No.	FISCAL YEAR	SHEET No.
3	FLA.	03032-2600	'66	2

SCALE 1" = 100'

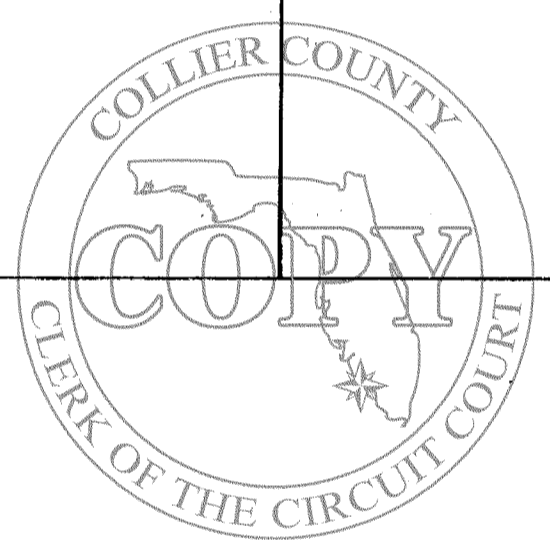
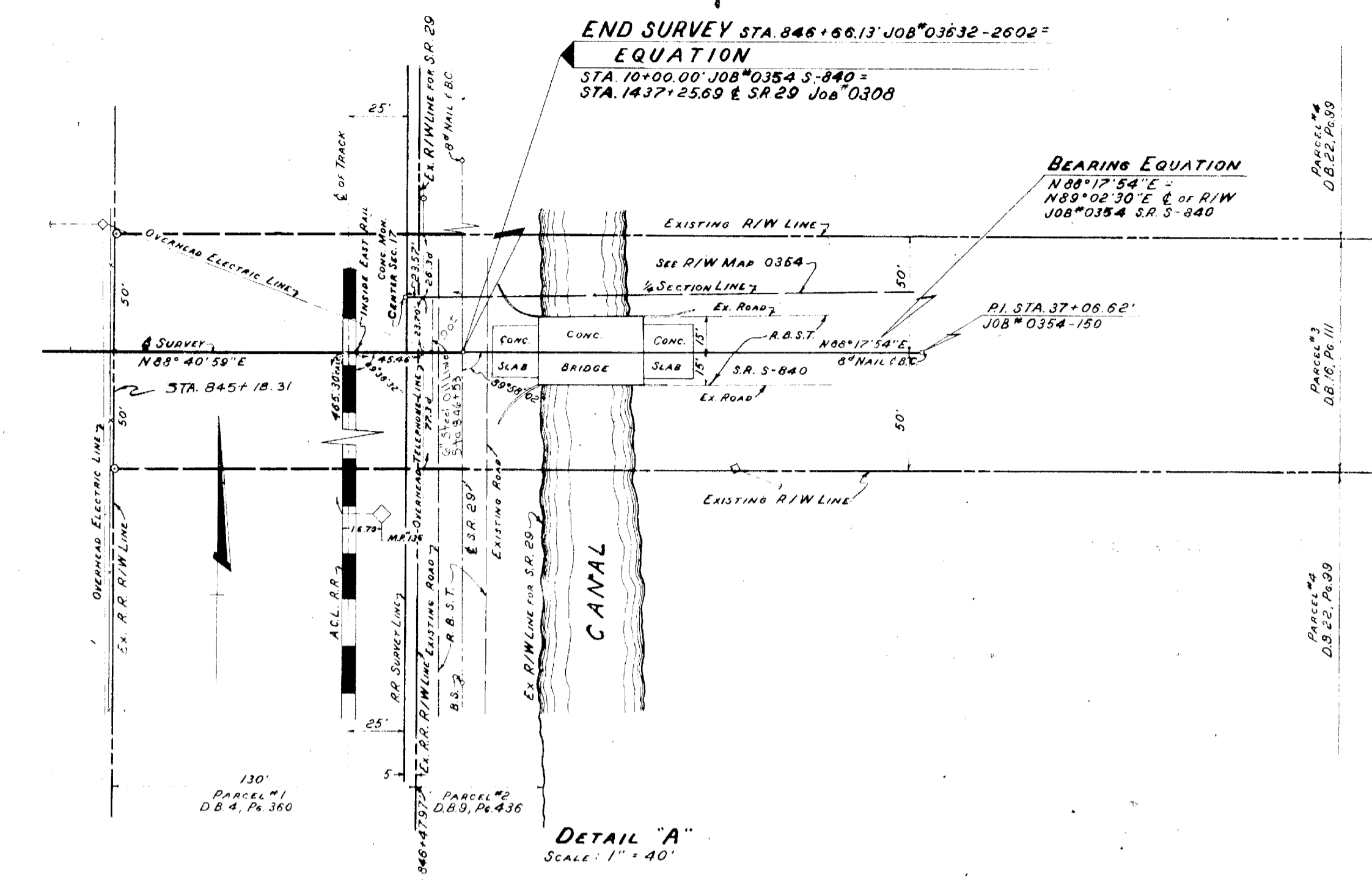
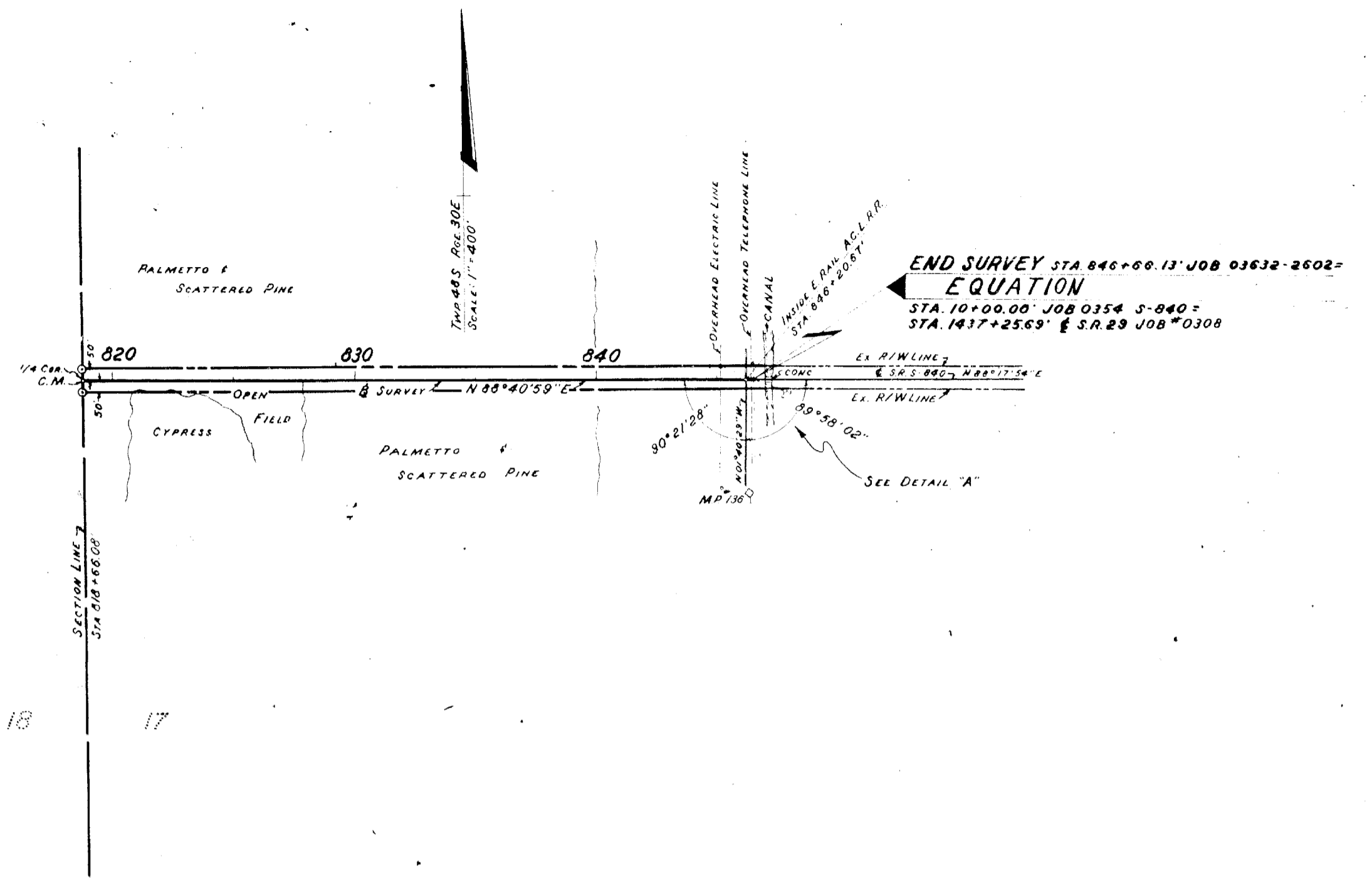


OIL-WELL ROAD
 STATE OF FLORIDA
 STATE ROAD DEPARTMENT
RIGHT OF WAY MAP
 STATE ROAD No. 5-85B COLLIER COUNTY

DATE	BY	DATE	APPROVED BY	DATE
5-66	FOSE		<i>James C. ...</i>	
6-66	WOLF			
6-66	FOSE	11-66		

SECTION 03632-2602 SHEET 2 OF 3

FED. ROAD DIV. No.	STATE	PROJECT No.	FISCAL YEAR	SHEET No.
3	FLA.	03632-2602	'66	3



Lee County Electric Coop Inc.		
Station	Left	Right
845+13	55	
847+88		50

Intercounty Telephone & Telegraph	
Overhead telephone lines cross at Sta 846+50	

Summit Oil Pipeline Co. Station Runs N 45° of Sta 846+53.00

Note: & R/W Mkr. -- Symbol for Permanent R/W Markers. See Sheet No. 1 for details.

OIL - WELL ROAD

STATE OF FLORIDA
STATE ROAD DEPARTMENT

RIGHT OF WAY MAP

STATE ROAD No. **3-858** COLLIER COUNTY

DRAWN	By	DATE	APPROVED BY	DATE
TRACED	R. Wold	0-66	<i>[Signature]</i>	DISTRICT ENGINEER
CHECKED	G. Foss	11-66		
COMPILED				
INDEXED				

ENGINEER OF RIGHTS OF WAY
[Signature] 3-16-67
STATE HIGHWAY ENGINEER

PRMS & Note L.W. 2-19-73
Add Steeling Line D.R.M.H.E. 3-22-67
REVISION BY DATE

SECTION. 03632-2602 SHEET 3 OF 3