

FLORIDA DEPARTMENT OF NATURAL RESOURCES

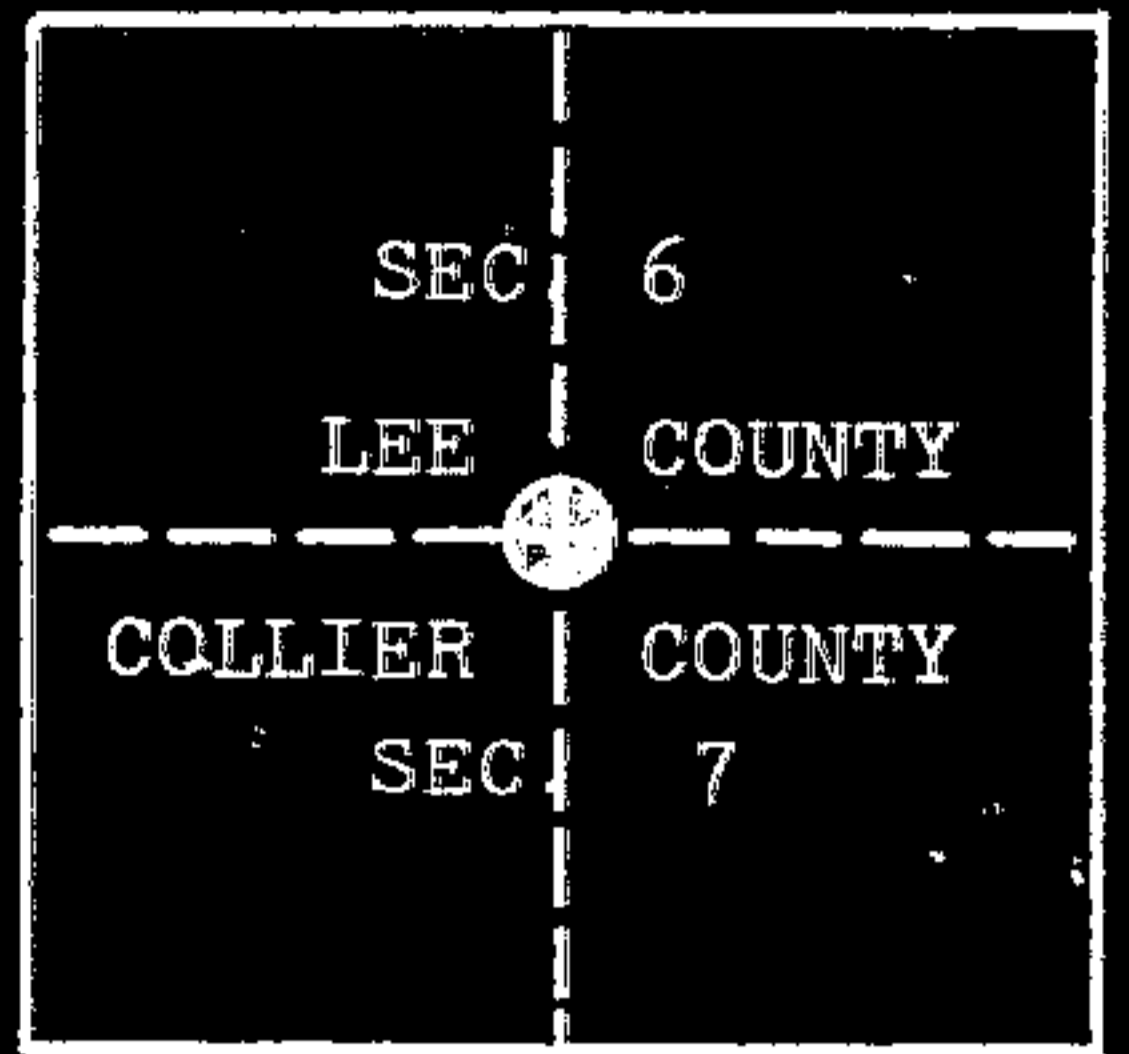
CERTIFIED CORNER RECORD

0025038

E-03

CORNER DESCRIPTION:

1/4 corner of Section(s) 6 & 7, Township 48 S., Range 26 E., Tallahassee Base and Meridian; LEE & COLLIER County(s), Florida



CORNER MONUMENT

Description of original monument and accessories and subsequent restoration. Give sources of information

Original GLO corner and accessories are lost and this position was never reestablished in accordance with GLO instructions.

The Collier Survey Monument was reportedly adjusted to equidistance between Section corners. However, by survey this is not the case and it appears the adjustment was made in the wrong direction.

Unless the contrary can be proven the Collier Survey Monument should not be called the Quarter Corner.

MONUMENT DESCRIPTION:

Description of corner evidence found:

None. I-75 construction has obliterated all evidence.

Collier Survey Monument found in a upright position three feet under surface.

Description of corner evidence set:

A tapered concrete monument with brass cap marked

1/4 COR

SEC 6

SEC 7

LS1350



Florida State Plane Coordinates of Corner (if determined):

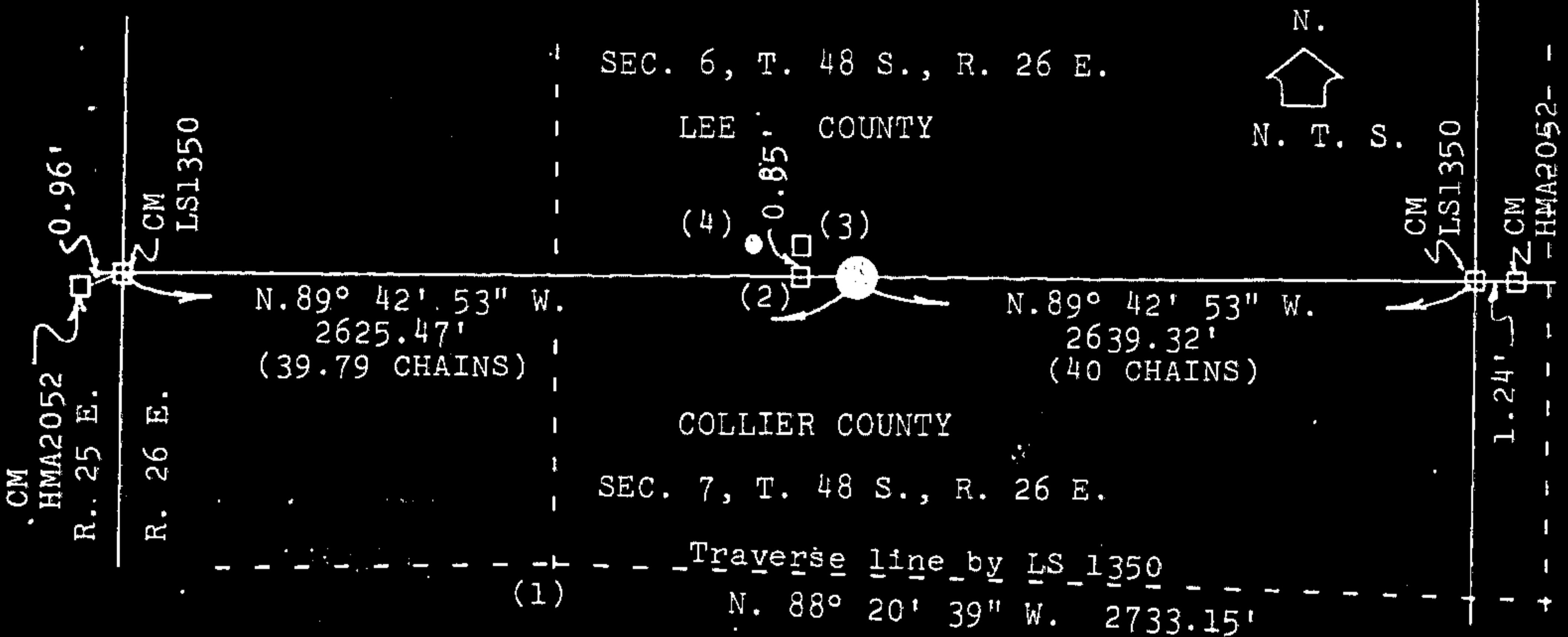
x: \_\_\_\_\_ y: \_\_\_\_\_ Zone: \_\_\_\_\_

Basis for coordinates:

RECEIVED

FEB 20 1987

SKETCH



REFERENCE MEASUREMENTS (at least three):

| Description              | Distance |        | Bearing<br>(Give Basis) |
|--------------------------|----------|--------|-------------------------|
|                          | feet     | metres |                         |
| (1) Stl. rod in e p      | 141.94   |        | S. 11° 08' 24" W.       |
| (2) S.R. over Collier CM | 21.41    |        | N. 89° 35' 40" W.       |
| (3) D.O.T. CM            | 21.63    |        | N. 87° 19' 10" W.       |
| (4) " " " SR             | 33.01    |        | N. 88° 23' 00" W.       |

Bearings refer to an assumed meridian

STATEMENT OF METHOD TO DETERMINE CORNER LOCATION (lost corners only)

Single proportionate measurement in accordance with GLO survey.

SURVEYORS CERTIFICATE: This is to certify that the monument and accessories indicated above are correctly described and shown as they were on Feb. 10, 1987 to the best of my knowledge and ability.

*P. A. Irminger, Sr.*  
Signature

P. A. Irminger, Sr.  
Firm or Agency

4175 Broken Back Rd.  
Address

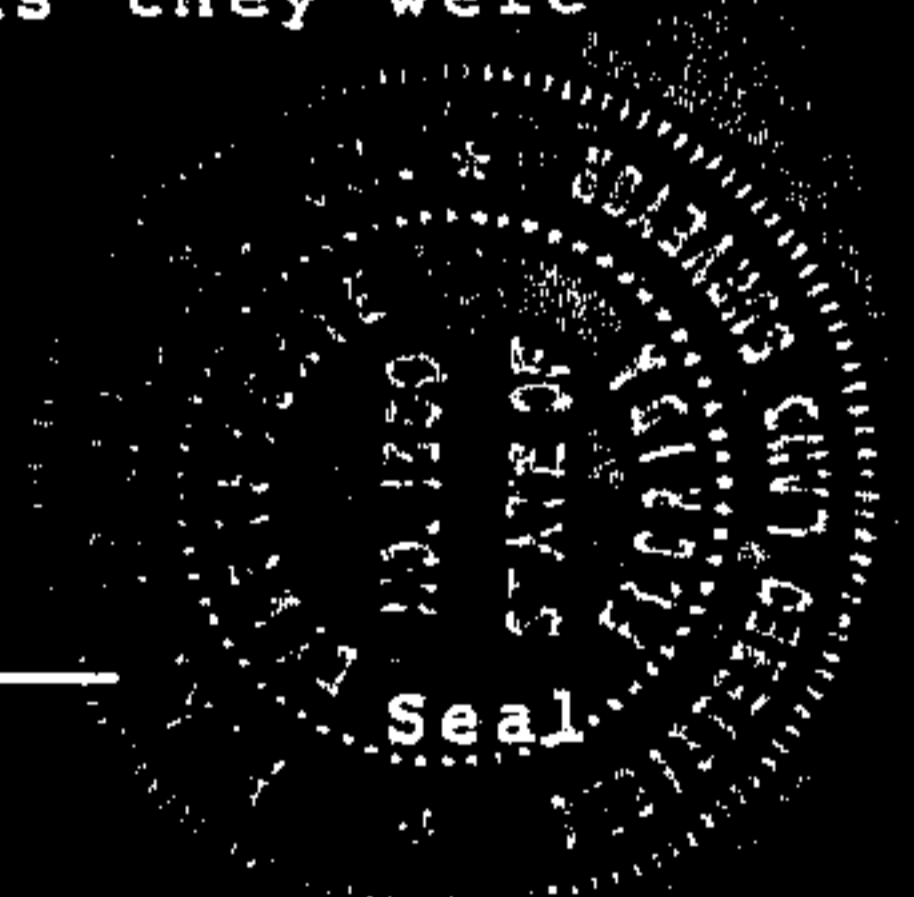
Naples, FL 33999

Checked By: *W*

Accepted and Filed: \_\_\_\_\_  
Date

LS 0001350  
Registration No.

2/13/87  
Date



*Terry C. Wilkinson*  
State Cadastral Surveyor

Send To: Bureau of Survey and Mapping  
Department of Natural Resources  
3900 Commonwealth Boulevard  
Tallahassee, Florida 32303