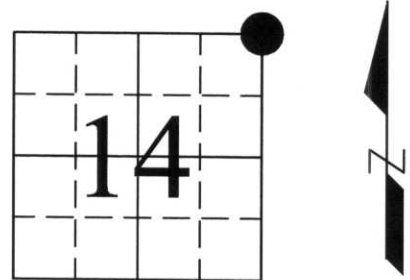


U.S. PUBLIC LAND SURVEY MONUMENT RECORD

Note: This form is intended and designed to fulfill all requirements of Wisconsin Administrative Code, Chapter A-E 7.08, U.S. Public Land Survey Monument Record (3) (a) (b) (c) (d) (e) (f) (g) (h) (i). An additional sheet may be added if necessary to conform with said requirements.

(a) Corner location: Township 33 North
 Range 8 East
 Town/City/Village Russell
 County Lincoln



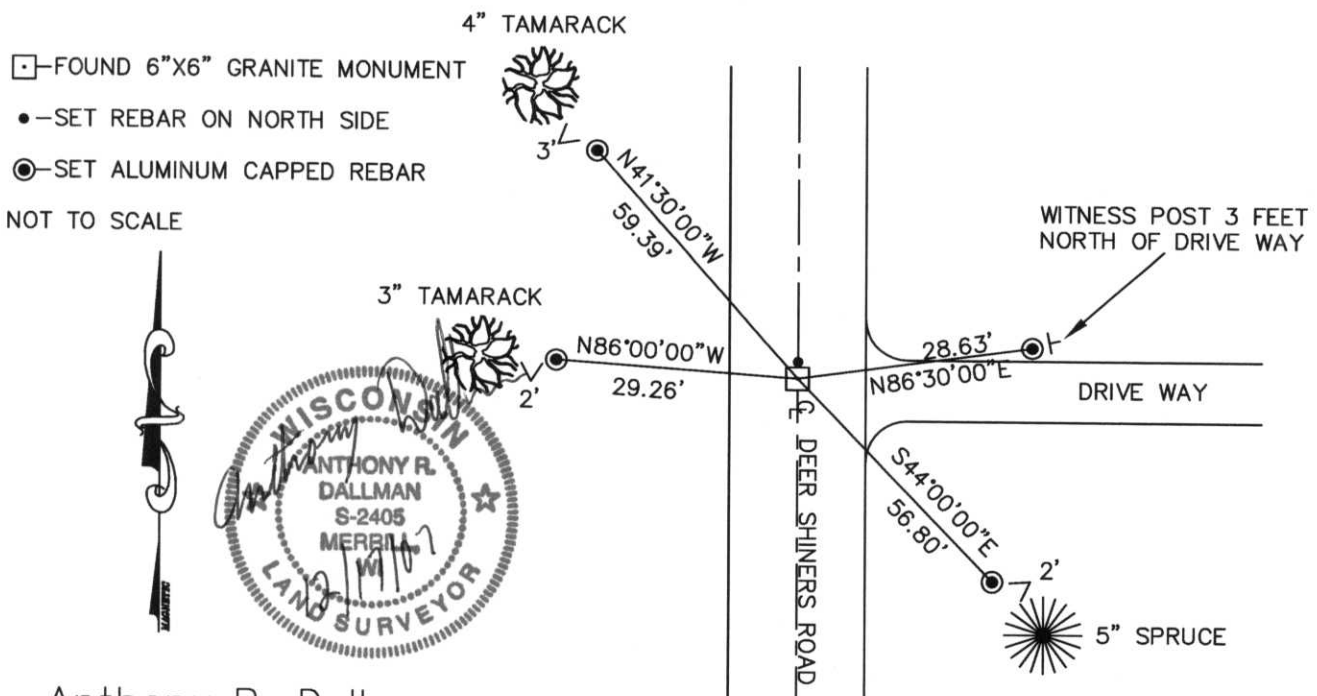
(b) (f) (g) (h) Description of monument found at this corner and if it was accepted, state all evidence (material, testimonial, occupational, plats, records, other monuments) used as a basis for accepting. If not accepted or if nothing was found, state evidence used as basis for establishing location. If reestablished through lost corner proportionate methods, indicate all monuments, distances and directions used to establish.

1854 - JACKSON L. PRENTICE ESTABLISHED SECTION POST, WITNESSED BY: TAMARACK 10 S37°W 8 LINKS
 TAMARACK 9 N55°W 30 LINKS
 TAMARACK 8 S70°E 15 LINKS
 BIRCH 12 N07°30'E 25 LINKS

UNKNOWN DATE - UNKNOWN SURVEYOR SET 6"X6" GRANITE MONUMENT.

2000 - FOUND 6"X6" GRANITE MONUMENT LEANING, STRAIGHTENED UP AND RESET DOWN 10" FROM ROAD SURFACE. WITNESSED AS SHOWN BELOW.

(c) (d) (e) Plan view of corner with ties to at least 4 witness monuments. If in disagreement with previously established corner, show the distance between the two corners and also indicate the ties to the disputed corner.



(i) I, Anthony R. Dallman
 (type or print name) certify that the corner location on this record was determined by me or under my direction and control and that this U.S. Public Land Survey Monument Record is correct and complete to the best of my knowledge and belief.

Anthony A. Dallman
 Signature

12/17/07
 Date

Index No. I-21