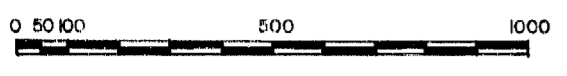


SCALE: 1" = 300'
 T.C.E. JOB NO. 1367
 DECEMBER 1967
 DWG NO. C-1367-19



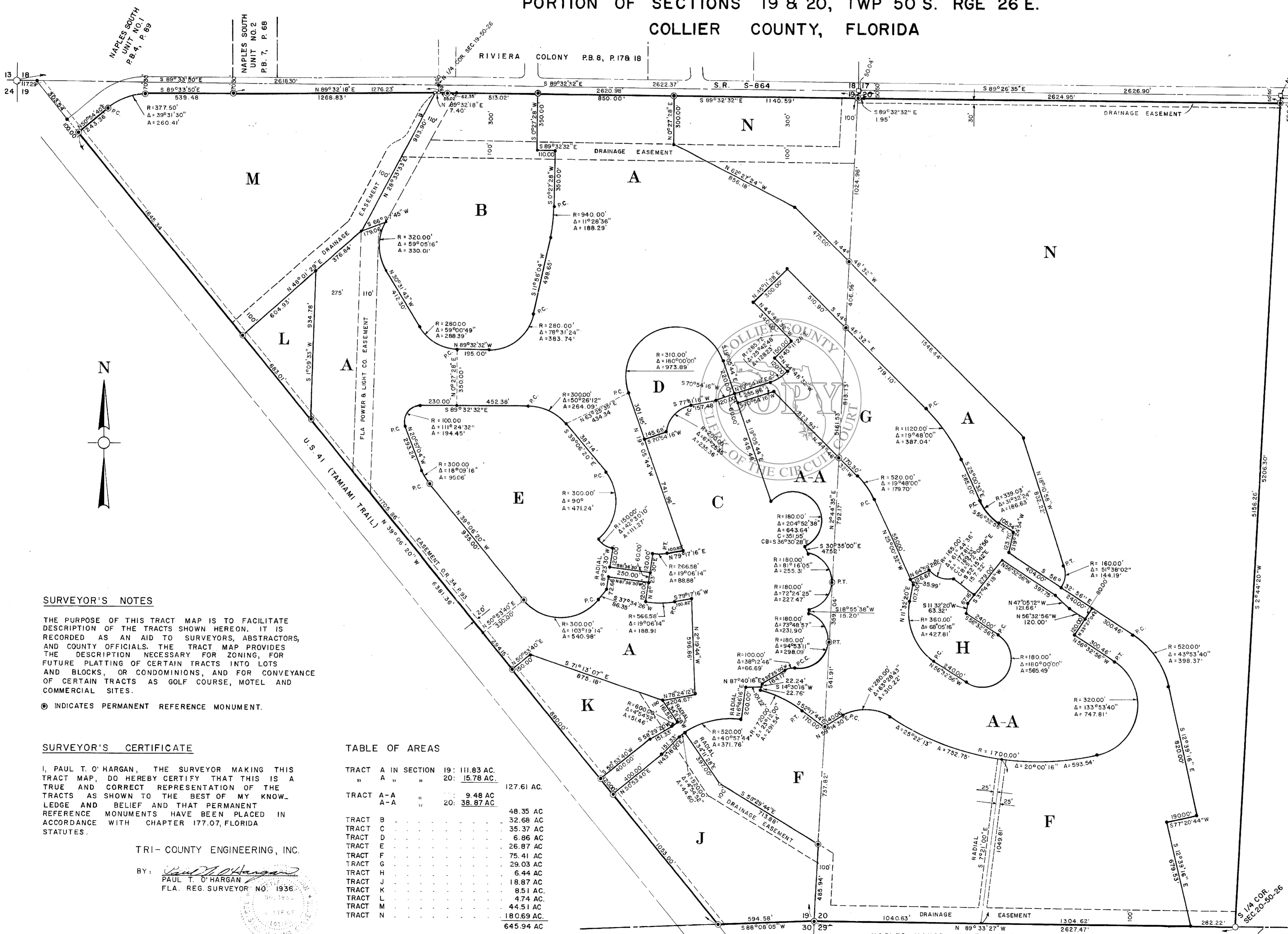
SCALE IN FEET

LELY GOLF ESTATES

TRACT MAP

PORTION OF SECTIONS 19 & 20, TWP 50 S. RGE 26 E.
 COLLIER COUNTY, FLORIDA

PREPARED BY: TRI-COUNTY ENGINEERING, INC.
 CIVIL & STRUCTURAL ENGINEERS,
 LAND PLANNERS & SURVEYORS
 NAPLES, FLORIDA



LEGAL DESCRIPTION

THE WEST 1/2 OF SECTION 20, AND SECTION 19, TOWNSHIP 50 SOUTH, RANGE 26 EAST, COLLIER COUNTY, FLORIDA, LYING SOUTHERLY & EASTERLY OF STATE ROAD S-864 AND LYING NORTHEASTERLY OF U.S. ROUTE 41 (TAMIAMI TRAIL).

COUNTY APPROVALS

THIS TRACT MAP APPROVED BY COLLIER COUNTY PLANNING COMMISSION THIS 17TH DAY OF December, A.D. 1967.

Carl A. Clemens
 EXECUTIVE SECRETARY

THIS TRACT MAP APPROVED BY COLLIER COUNTY ENGINEER THIS 17TH DAY OF December, A.D. 1967.

M. J. ...
 COUNTY ENGINEER

THIS TRACT MAP APPROVED IN REGULAR OPEN MEETING BY THE BOARD OF COUNTY COMMISSIONERS OF COLLIER COUNTY, FLORIDA, THIS 17TH DAY OF December, A.D. 1967, PROVIDED THAT THE PLAT IS FILED IN THE OFFICE OF THE CLERK OF THE CIRCUIT COURT OF COLLIER COUNTY, FLORIDA, WITHIN 90 DAYS FROM THE DATE OF THIS APPROVAL.

Margaret J. ... CLERK
A. P. ... CHAIRMAN

FILING RECORD

I HEREBY CERTIFY THAT THIS TRACT MAP HAS BEEN EXAMINED BY ME AND THAT IT COMPLIES IN FORM WITH THE REQUIREMENTS OF CHAPTER 177, FLORIDA STATUTES, AND THAT SAID TRACT MAP WAS FILED FOR RECORD AT 10:11 A.M., THIS 17TH DAY OF December, A.D. 1967 AND RECORDED IN PLAT BOOK 8, PAGE 20, PUBLIC RECORDS OF COLLIER COUNTY, FLORIDA.

Margaret J. ...
 CLERK OF THE CIRCUIT COURT

SURVEYOR'S NOTES

THE PURPOSE OF THIS TRACT MAP IS TO FACILITATE DESCRIPTION OF THE TRACTS SHOWN HEREON. IT IS RECORDED AS AN AID TO SURVEYORS, ABSTRACTORS, AND COUNTY OFFICIALS. THE TRACT MAP PROVIDES THE DESCRIPTION NECESSARY FOR ZONING, FOR FUTURE PLATTING OF CERTAIN TRACTS INTO LOTS AND BLOCKS, OR CONDOMINIUMS, AND FOR CONVEYANCE OF CERTAIN TRACTS AS GOLF COURSE, MOTEL AND COMMERCIAL SITES.

⊙ INDICATES PERMANENT REFERENCE MONUMENT.

SURVEYOR'S CERTIFICATE

I, PAUL T. O'HARGAN, THE SURVEYOR MAKING THIS TRACT MAP, DO HEREBY CERTIFY THAT THIS IS A TRUE AND CORRECT REPRESENTATION OF THE TRACTS AS SHOWN TO THE BEST OF MY KNOWLEDGE AND BELIEF AND THAT PERMANENT REFERENCE MONUMENTS HAVE BEEN PLACED IN ACCORDANCE WITH CHAPTER 177.07, FLORIDA STATUTES.

TRI-COUNTY ENGINEERING, INC.

BY: *Paul T. O'Horgan*
 PAUL T. O'HARGAN
 FLA. REG. SURVEYOR NO. 1936

TABLE OF AREAS

TRACT A	IN SECTION 19:	111.83 AC.
TRACT A	IN SECTION 20:	15.78 AC.
TRACT A-A		9.48 AC.
TRACT A-A		38.87 AC.
TRACT B		48.35 AC.
TRACT C		32.68 AC.
TRACT D		35.37 AC.
TRACT E		6.86 AC.
TRACT F		26.87 AC.
TRACT G		75.41 AC.
TRACT H		29.03 AC.
TRACT J		6.44 AC.
TRACT K		18.87 AC.
TRACT L		8.51 AC.
TRACT M		4.74 AC.
TRACT N		44.51 AC.
TRACT N		180.69 AC.
		645.94 AC.