

Variation 4° 45' East.



Contents.					
Sec	Area	Sec	Area	Sec	Area
1	458.99	13		25	
2	168.72	14	18.87	26	
3	396.10	15	18.62	27	
4	640.	16		28	76.02
5	640.	17	3.88	29	396.68
6	640.	18	465.14	30	640.
7	424.18	19	639.	31	449.70
8	599.03	20	287.77	32	640.
9	527.03	21		33	631.50
10	489.23	22		34	129.92
11	26.	23		35	
12	44.08	24		36	
Total 9441.85 Acres.					

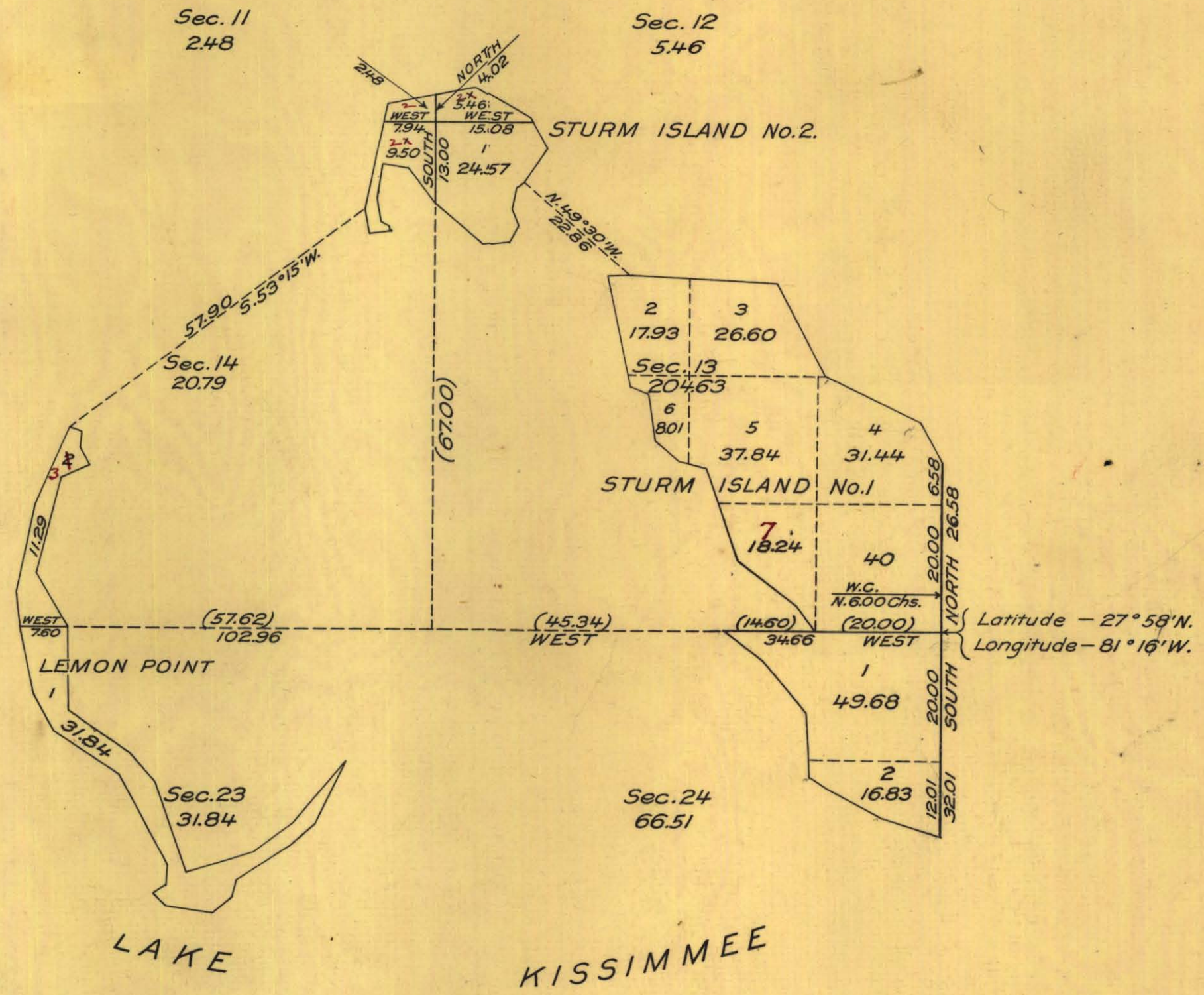
Scale 40 Ch to an In.

Townshipped and Sectioned in January and February 1852. by Marcellus A. Williams Dep Surveyor.

Henry A Sanford, Chairman.
James Sanders

Examined, Compared with Field notes & Approved.
28. May 1852. P. A. Putnam
Surveyor General

PLAT of STURM ISLANDS Nos. 1 and 2, and LEMON POINT
 in
LAKE KISSIMMEE,
 in
 Sections 11, 12, 13, 14, 23 and 24, T. 29 S., R. 30 E., Talla. Mer.,
FLORIDA.



Latitude - 27° 58' N.
 Longitude - 81° 16' W.

LEGEND

Scale : 20 chains to an inch.
 Surveyed by Chas. M. Pidgeon and Wm. H. Richards,
 Jr., U.S. Surveyors, in April, 1913, and in April, 1915, under
 special instructions dated January 29, 1913, and March
 23, 1915, issued by the Commissioner of the General Land
 Office.
 Distances in parentheses are calculated, and are shown
 for the purpose of indicating the theoretical position of
 certain section lines, as well as the method of subdivid-
 ing the sections.
 Area of lands surveyed = 331.71 acres, not shown up-
 on the plat approved May 25, 1852.

Department of the Interior,
 General Land Office,
 Washington, D.C. January 18, 1917.
 The above plat of Sturm Islands Nos. 1 and 2,
 and Lemon Point in Lake Kissimmee, in Secs. 11, 12, 13,
 14, 23 and 24, T. 29 S., R. 30 E., Tallahassee Meridian,
 Florida, is strictly conformable to the field notes of
 the survey thereof, on file in this office, which have
 been examined and approved.

Commissioner and ex officio
 U.S. Surveyor General for Florida.

Variation 4° 48' East.



Contents.					
Sec	Area	Sec	Area	Sec	Area
1	458.99	13		25	
2	168.72	14	18.57	26	
3	396.10	15	18.62	27	
4	640.	16		28	76.02
5	640.	17	3.88	29	396.68
6	640.	18	463.14	30	640.
7	424.18	19	639.	31	449.10
8	599.03	20	287.77	32	640.
9	527.03	21		33	631.50
10	489.23	22		34	129.92
11	26.	23		35	
12	44.68	24		36	
Total 9441.85 Acres.					

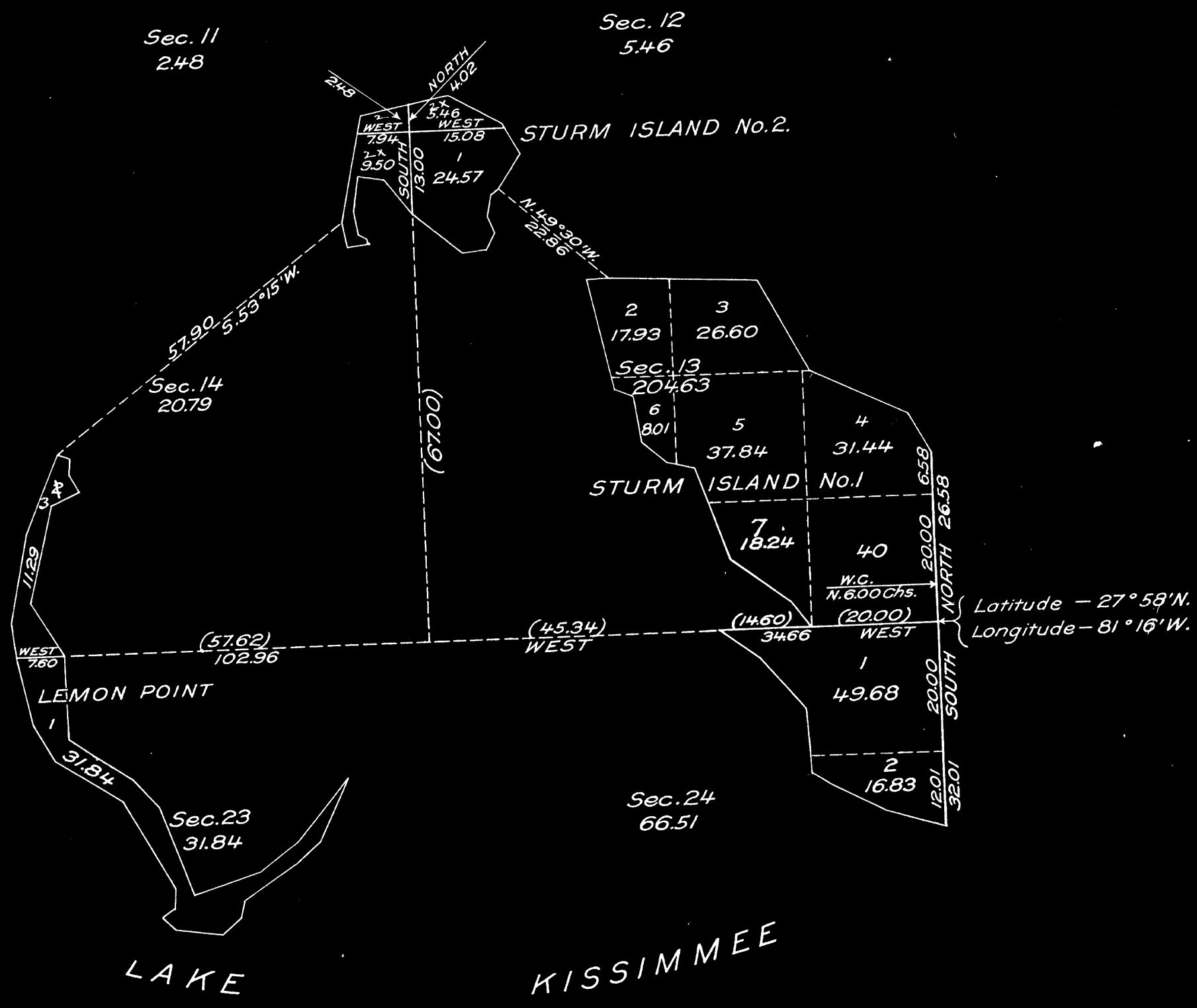
Scale 40 Ch to an In.

Townshipped and Sectioned in January and February 1852. by Marcellus A. Williams, Dep Surveyor.

Henry H. Sanford, Chammen.
James Sanders, Chammen.

Examined, Compared with field notes & approved.
28 May 1852. P. A. Putnam, Surveyor General.

PLAT of STURM ISLANDS Nos. 1 and 2, and LEMON POINT
 in
 LAKE KISSIMMEE,
 in
 Sections 11, 12, 13, 14, 23 and 24, T. 29 S., R. 30 E., Talla. Mer.,
 FLORIDA.



LEGEND

Scale: 20 chains to an inch.
 Surveyed by Chas. M. Pidgeon and Wm. H. Richards,
 Jr., U.S. Surveyors, in April, 1913, and in April, 1915, under
 special instructions dated January 29, 1913, and March
 23, 1915, issued by the Commissioner of the General Land
 Office.
 Distances in parentheses are calculated, and are shown
 for the purpose of indicating the theoretical position of
 certain section lines, as well as the method of subdivid-
 ing the sections.
 Area of lands surveyed = 331.71 acres, not shown up-
 on the plat approved May 25, 1852.

Department of the Interior,
 General Land Office,
 Washington, D.C. January 18, 1917.
 The above plat of Sturm Islands Nos. 1 and 2,
 and Lemon Point in Lake Kissimmee, in Secs. 11, 12, 13,
 14, 23 and 24, T. 29 S., R. 30 E., Tallahassee Meridian,
 Florida, is strictly conformable to the field notes of
 the survey thereof, on file in this office, which have
 been examined and approved.

[Signature]
 Commissioner and ex officio
 U.S. Surveyor General for Florida.

T. 29 S. R. 30 E.

12



Claim of State to further Elections Act 1850, Visited August 2, 1911

ROAD OR
WILLOW
ISLAND